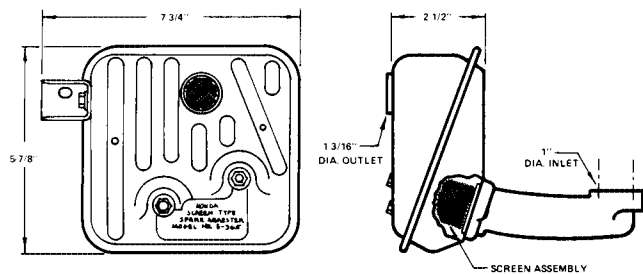
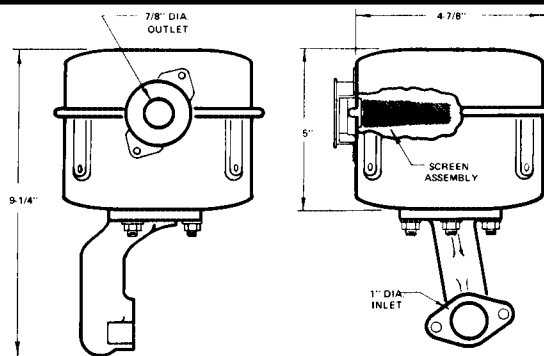


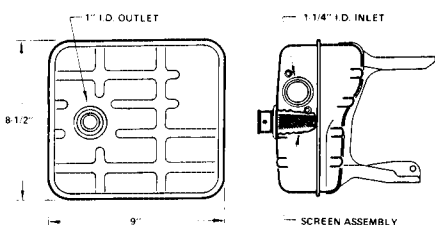
HONDA (continued)



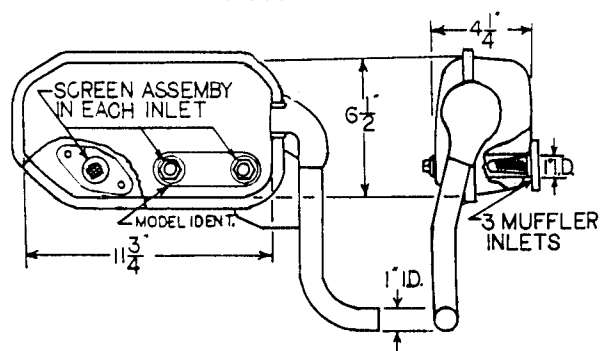
S-365



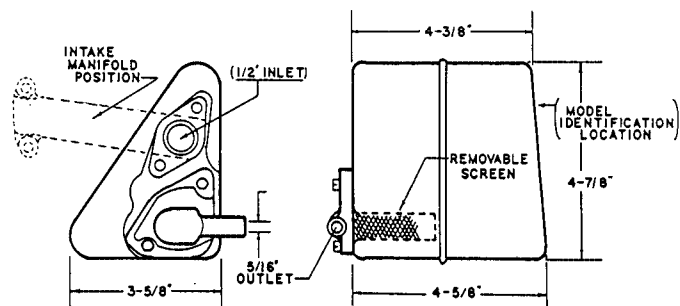
S-366



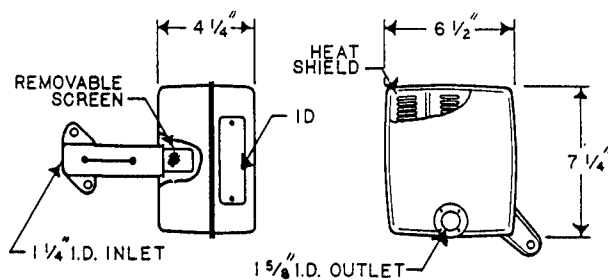
S-366 A



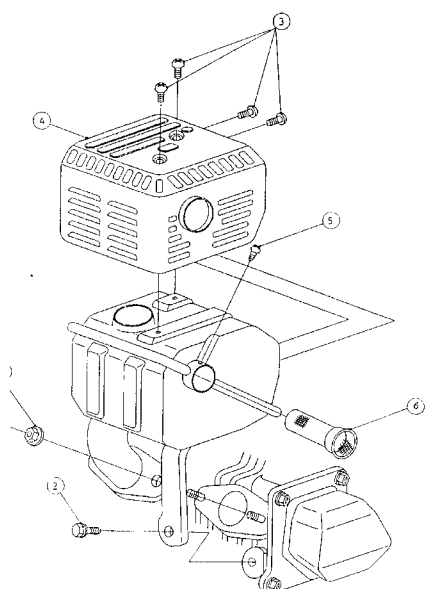
S-366 B



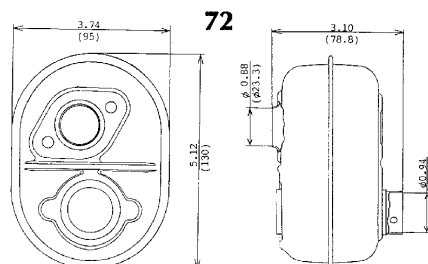
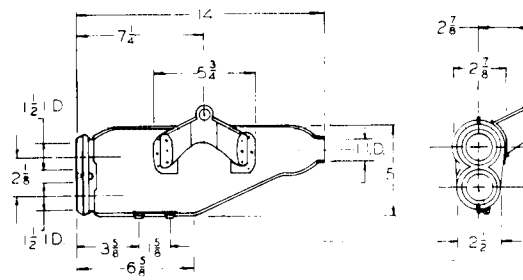
S-367



S-368



S-415



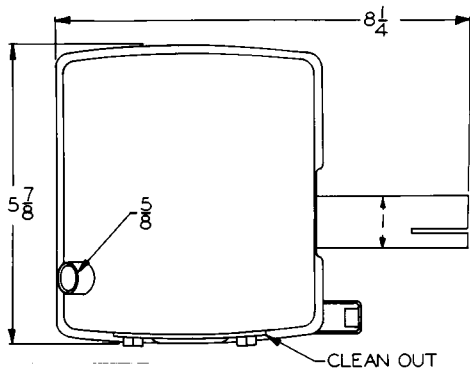
72

Honda S-417

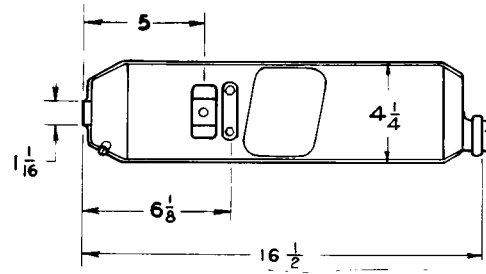
SCALE
MM:1 = Inch:Millimeter

HONDA

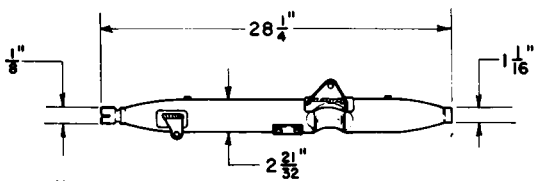
HONDA (continued)



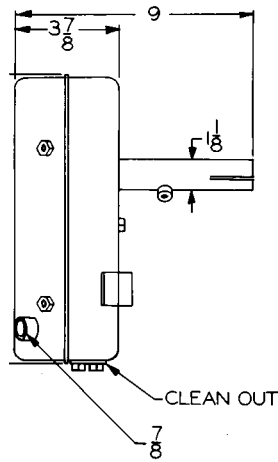
113



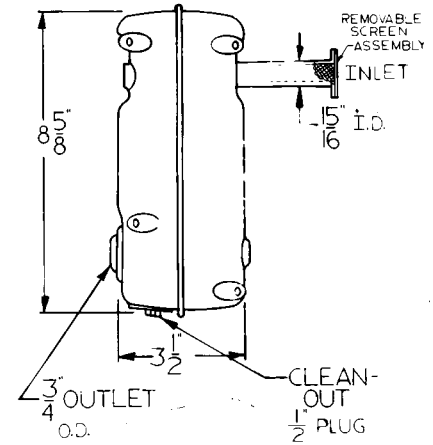
175



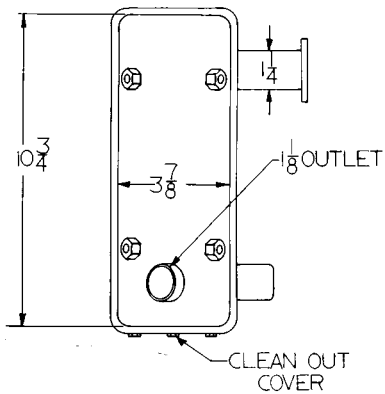
200



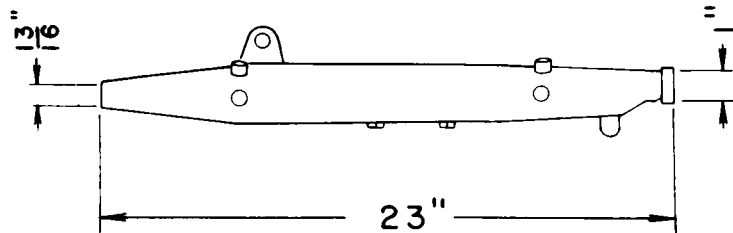
405-405A



408

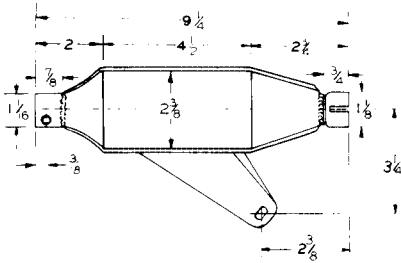


503

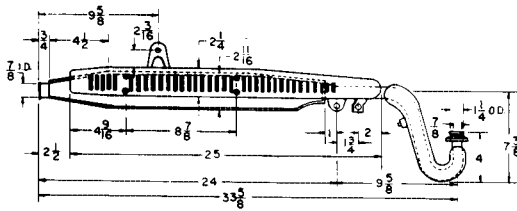


1063

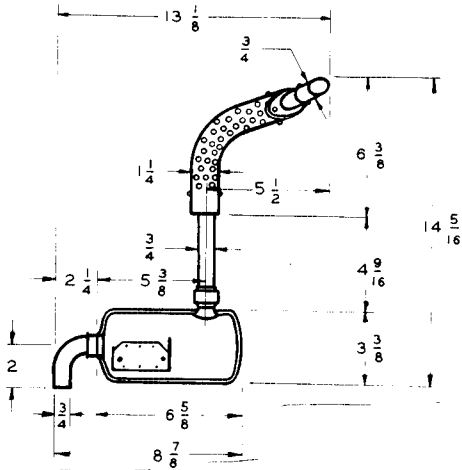
HONDA-KRIZMAN



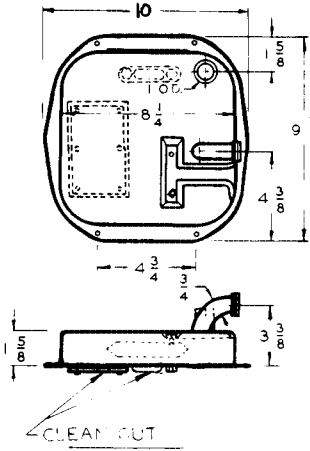
103



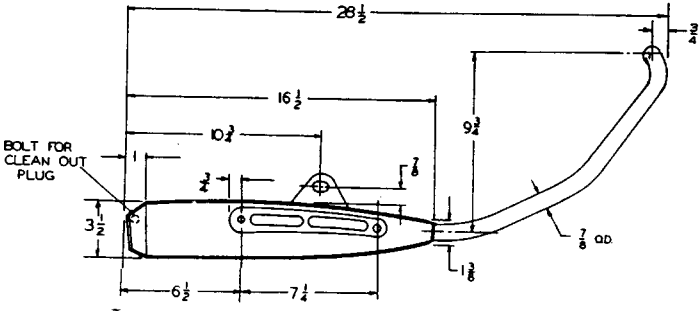
104



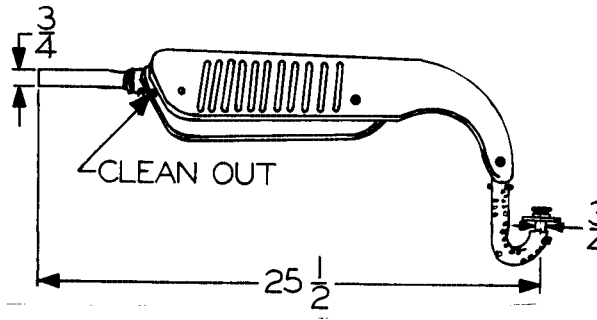
105



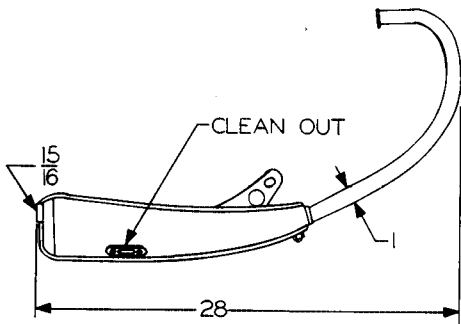
106



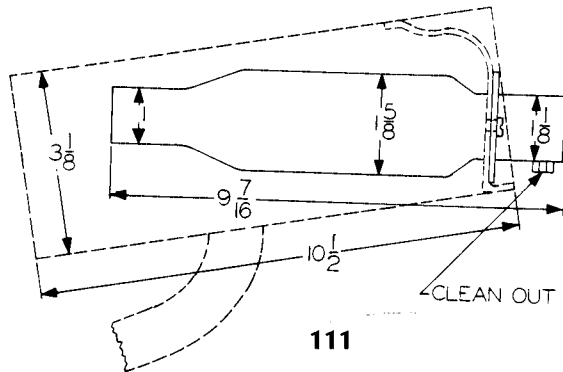
107



108



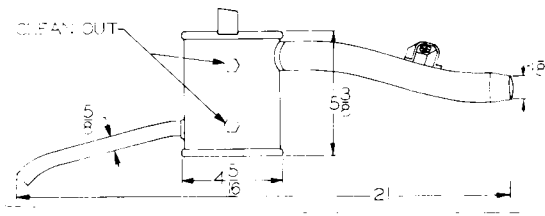
109



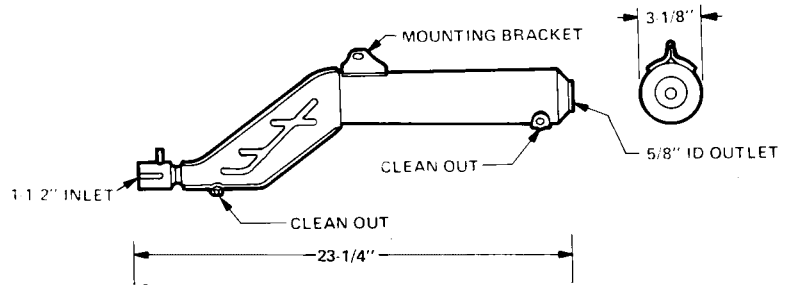
111

HONDA-KRIZMAN

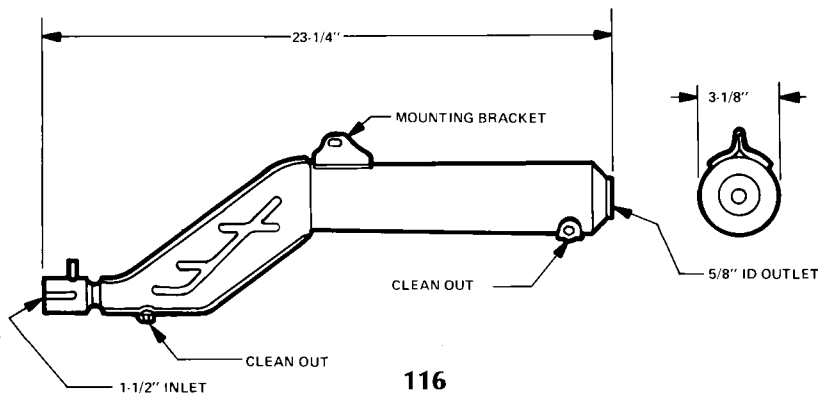
HONDA-KRIZMAN (continued)



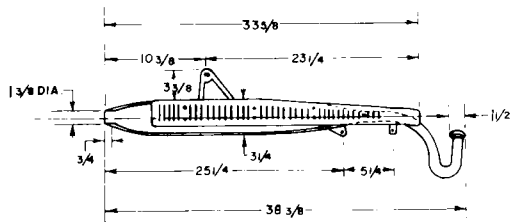
112



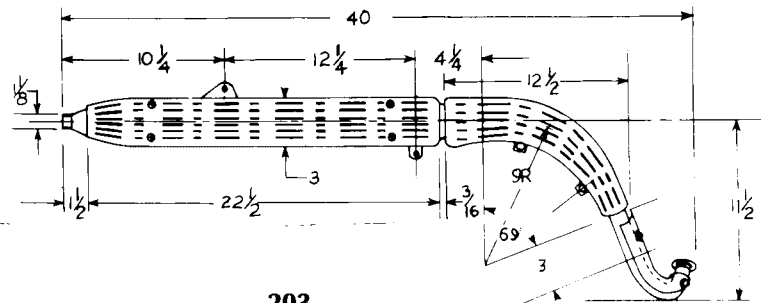
115 Production Model



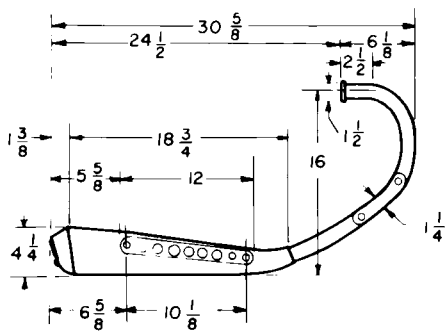
116



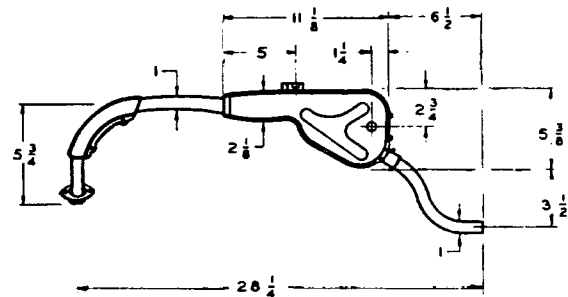
204



203

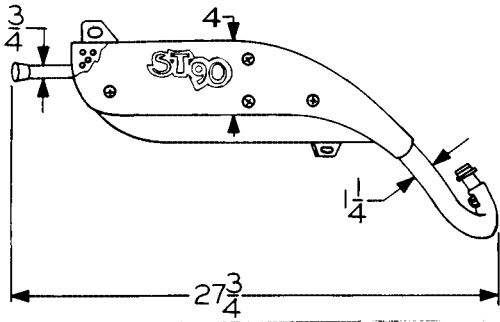


205

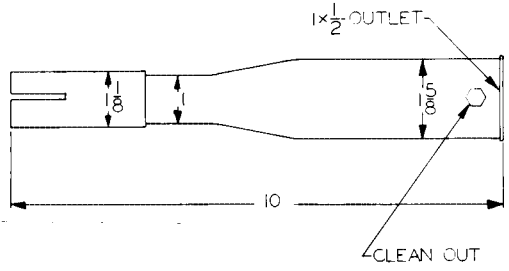


206

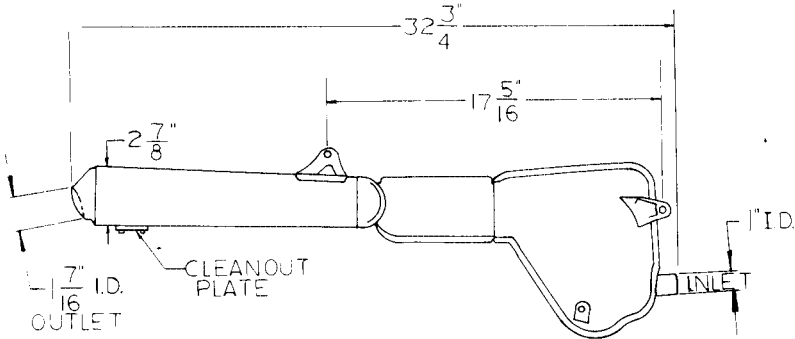
HONDA-KRIZMAN (continued)



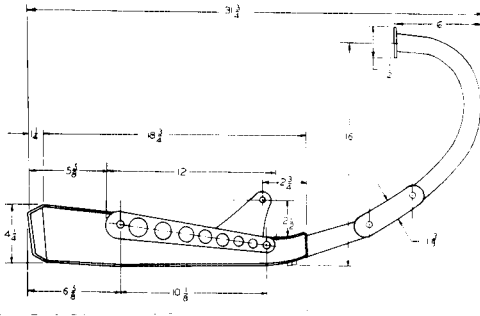
207



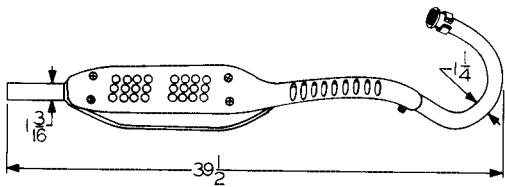
209



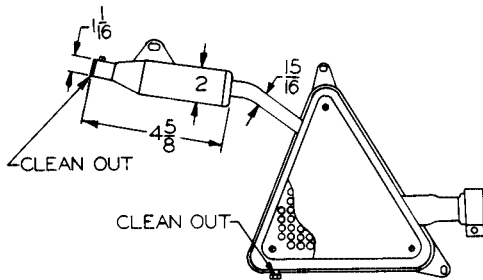
210



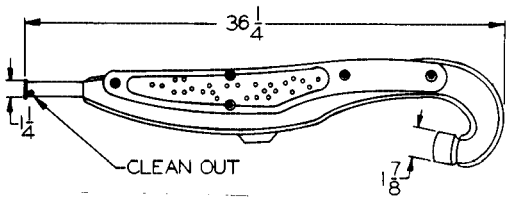
300



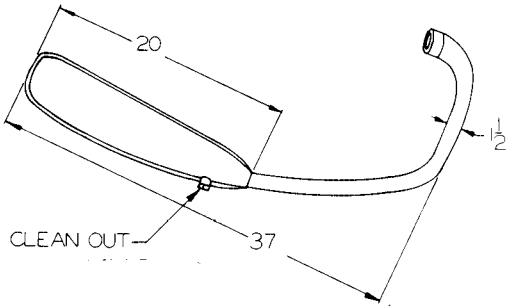
301



302



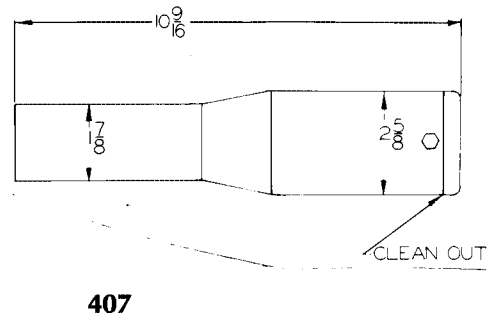
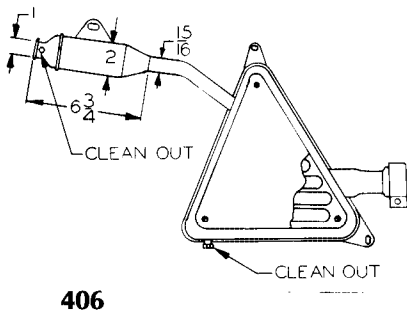
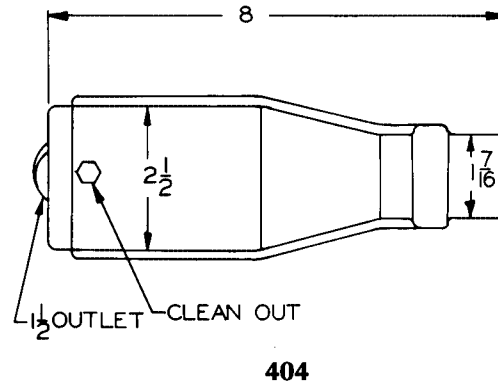
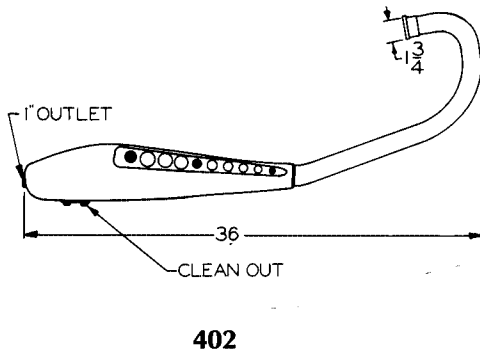
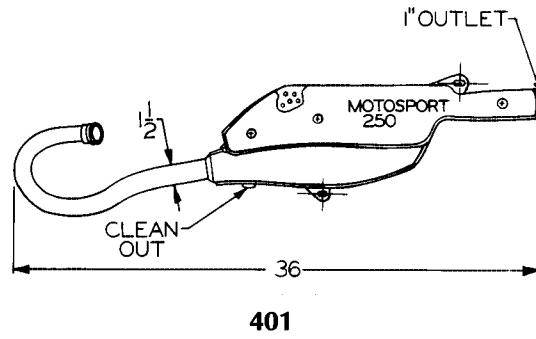
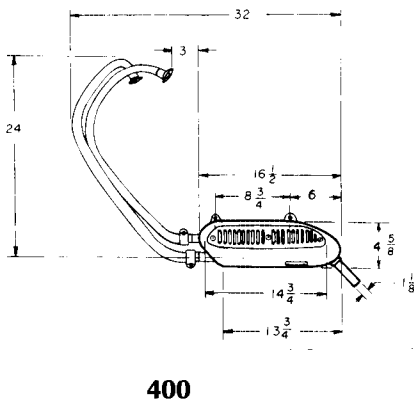
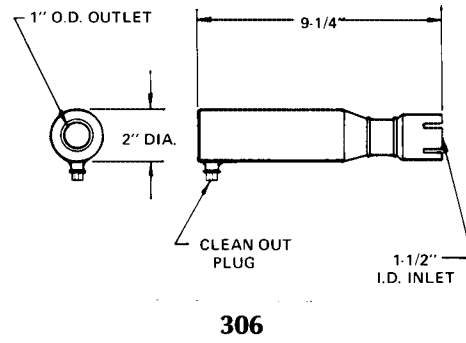
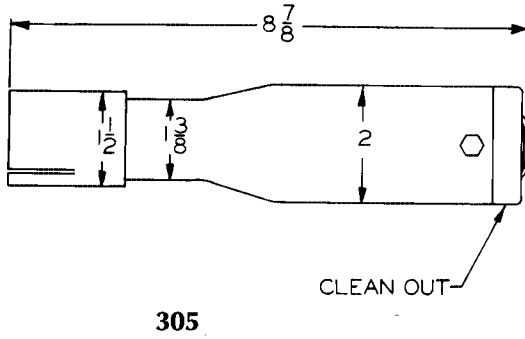
303



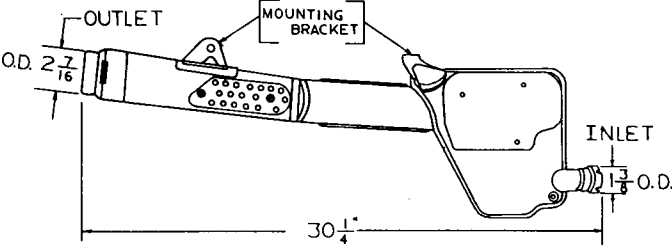
304

HONDA-KRIZMAN

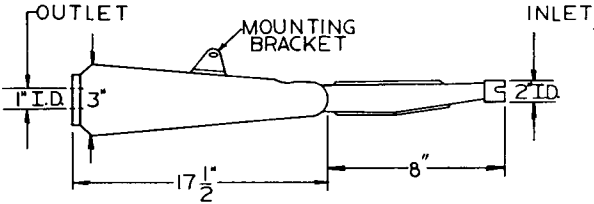
HONDA-KRIZMAN (continued)



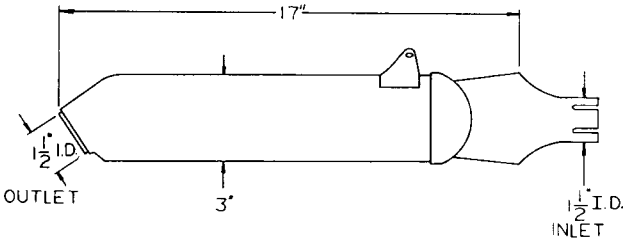
HONDA-KRIZMAN (continued)



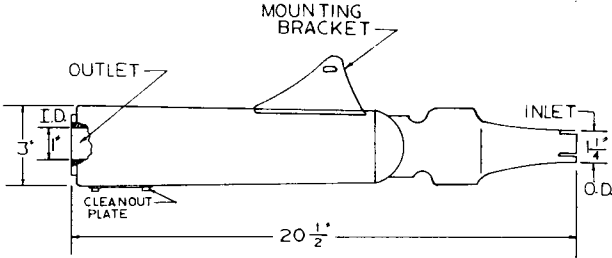
409



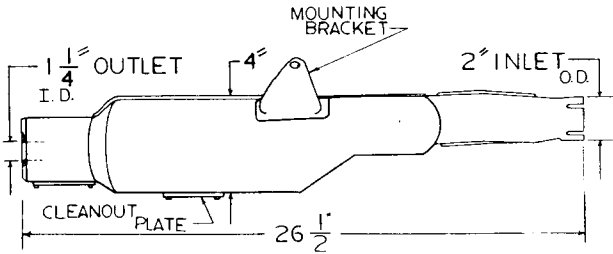
409A



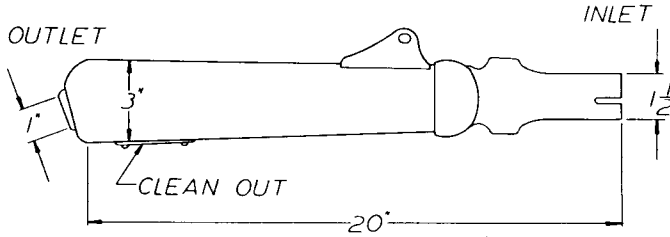
410



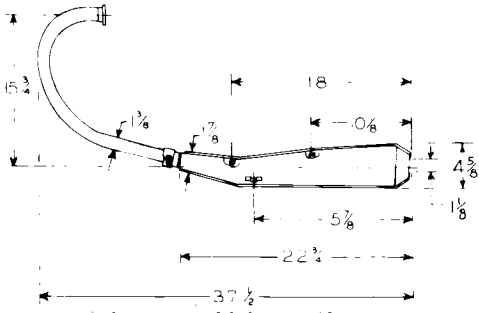
411



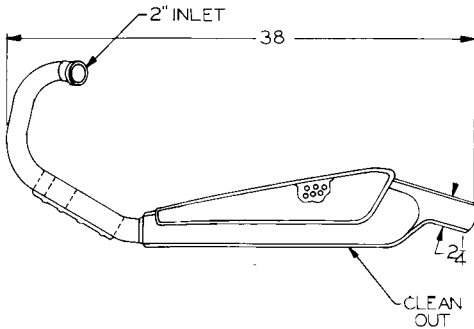
412



413



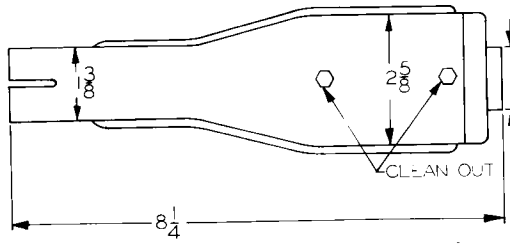
500



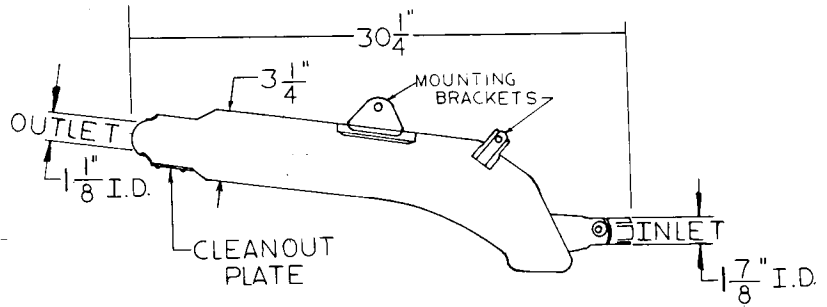
501

HONDA-KRIZMAN

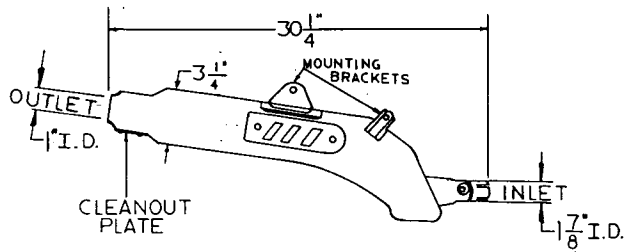
HONDA-KRIZMAN (continued)



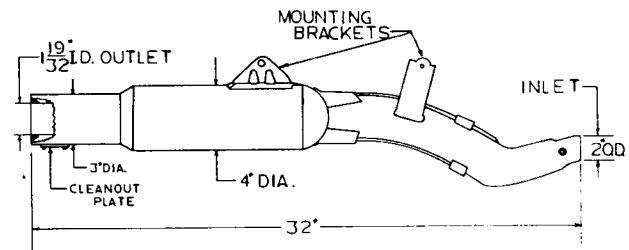
502



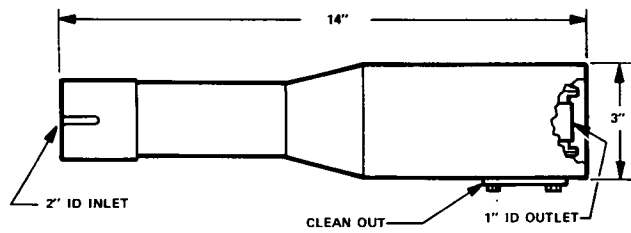
504



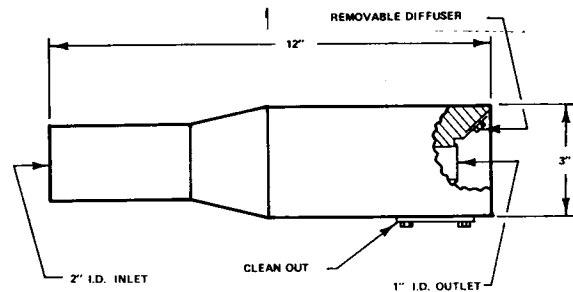
505



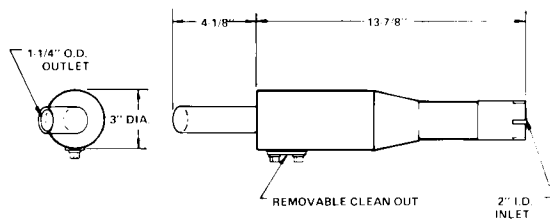
506



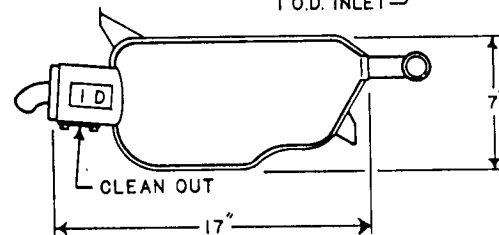
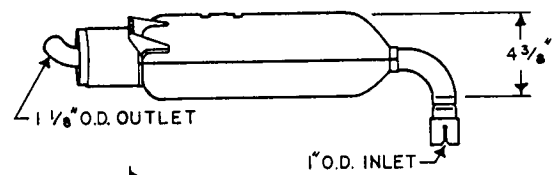
507



508

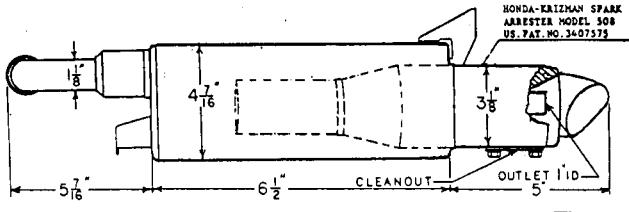


508 (curved outlet)

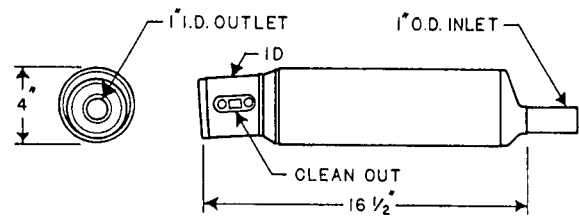


508

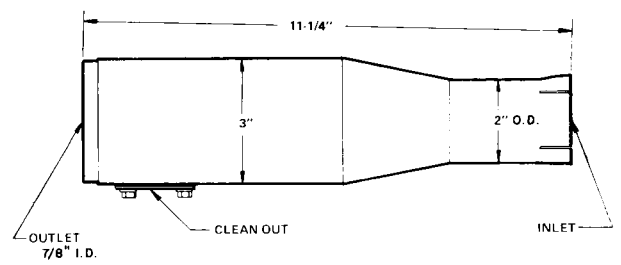
HONDA-KRIZMAN (continued)



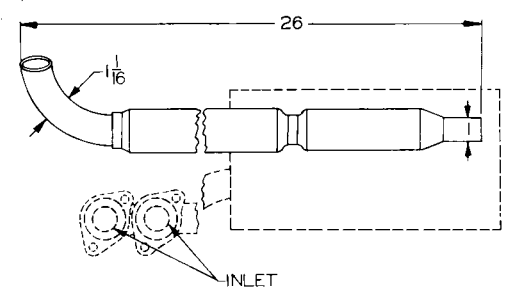
508



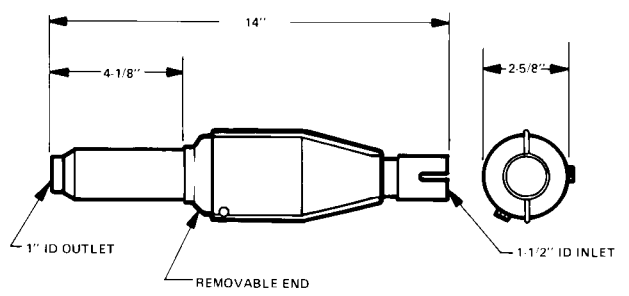
508



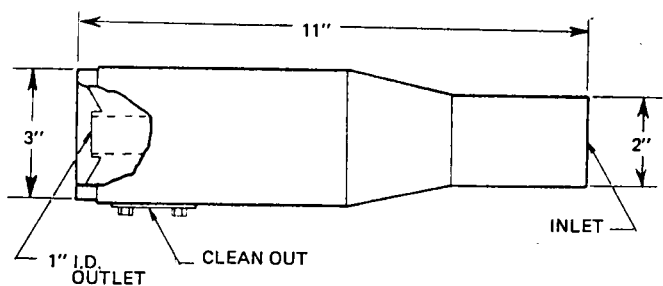
509



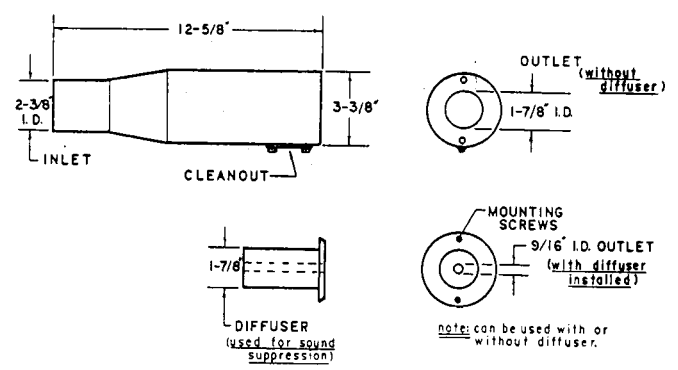
600



601



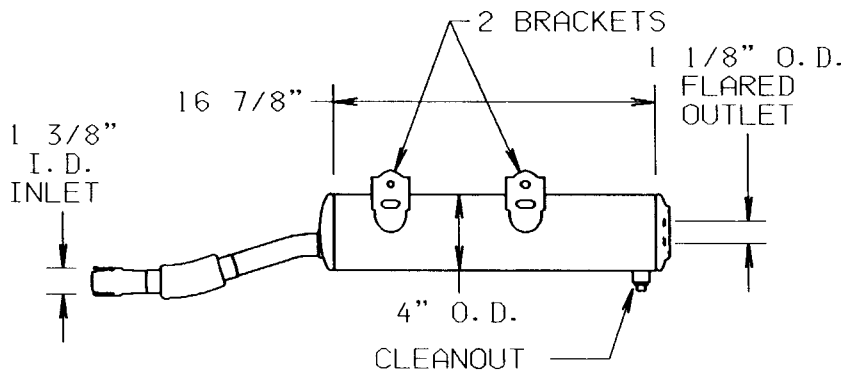
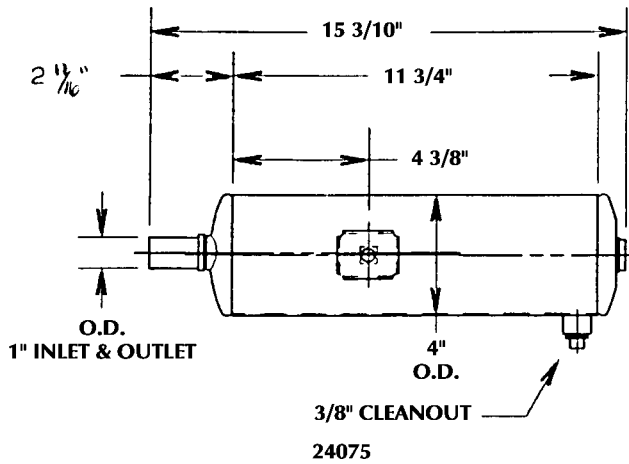
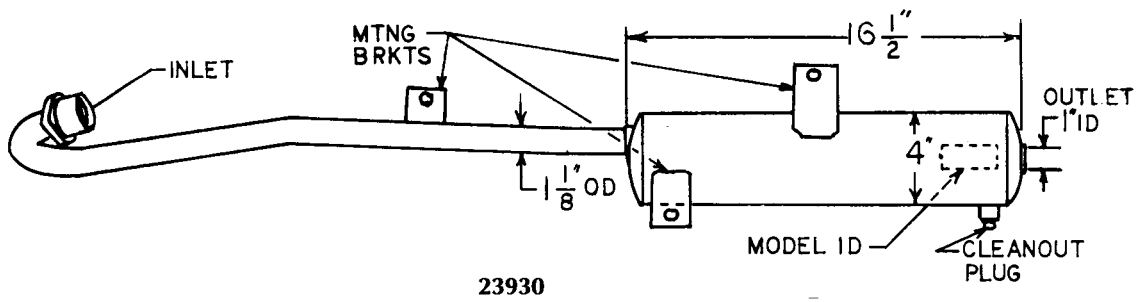
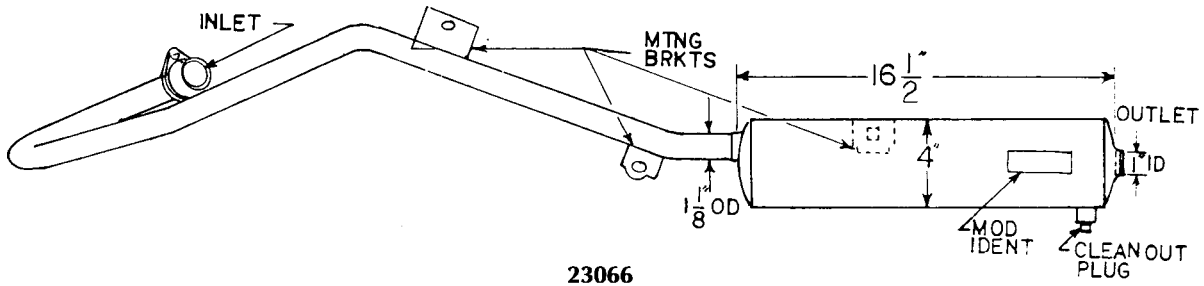
700



701

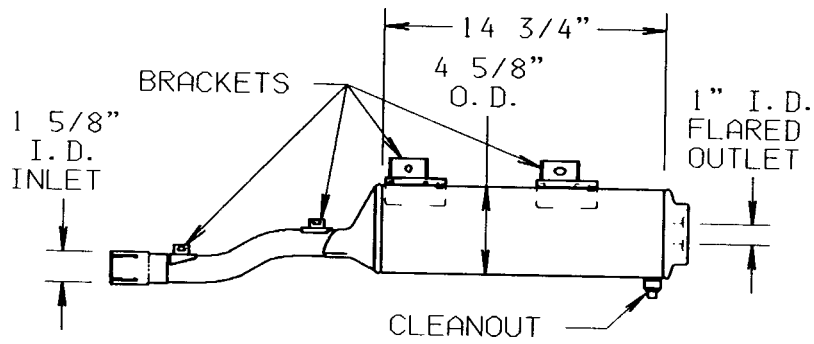
HONDA-NELSON

HONDA-NELSON

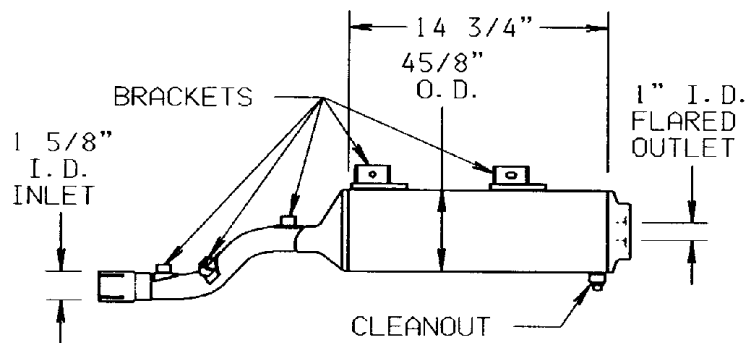


Honda-Nelson 26296

HONDA-NELSON

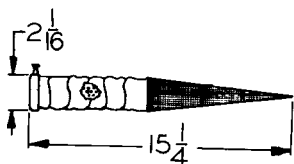
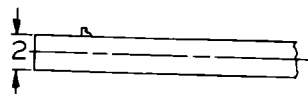


Honda-Nelson 27174

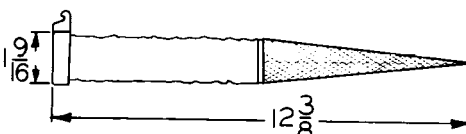
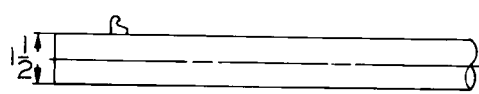


Honda-Nelson 27222

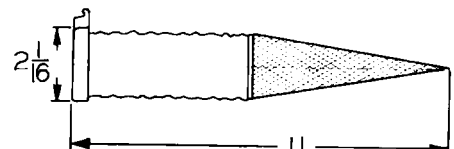
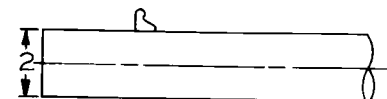
HOOKER



26281



26282

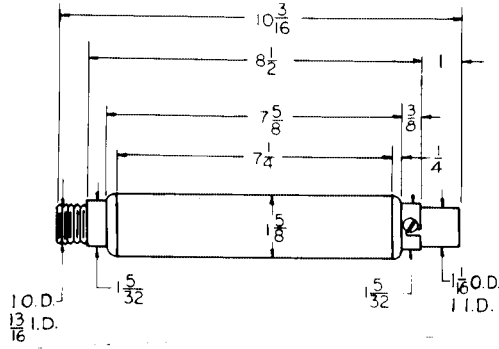


26283

HORSTMAN/HUTCHINS HUSQVARNA

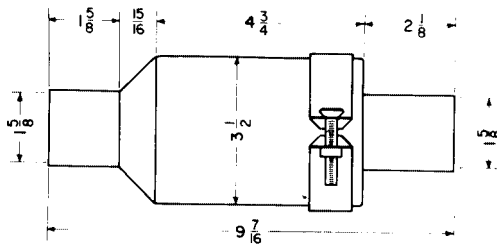
HORSTMAN

*Type A thru E provide various inlet dimensions and shapes



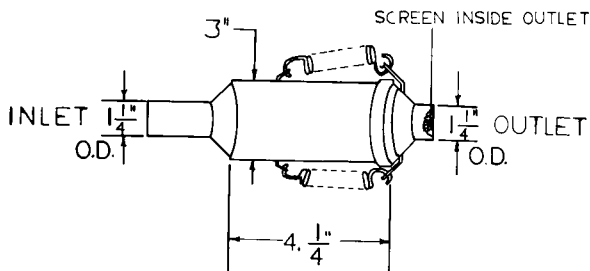
HE*

HUTCHINS



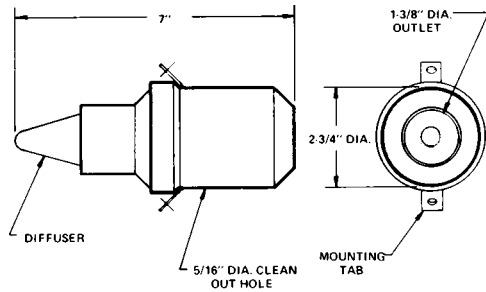
No. 1

HUSQVARNA



F15-1041

HUSQVARNA-KRIZMAN



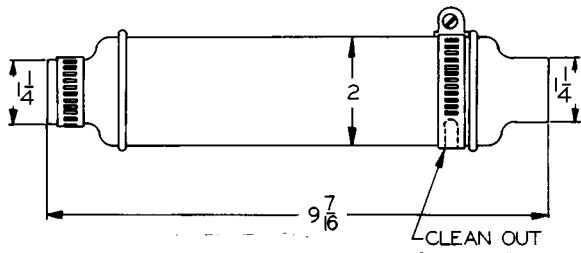
KS 500D

IHC

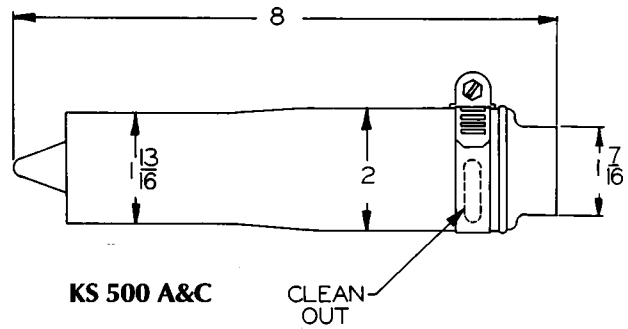
For IHC	70769C1	See Nelson T-12818
For IHC	829640C91	See Nelson T-13994
For IHC	561217C92	See Nelson T-13651
For IHC	677817R91	See Nelson T10374
For IHC	563507C91	See Nelson T-14005
For IHC	829176C91	See Nelson T-14009

J&R KRIZMAN

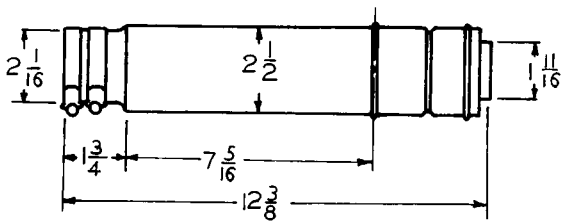
J&R KRIZMAN



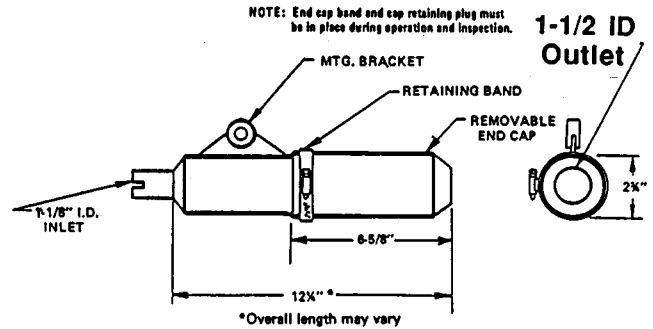
KS 350



KS 500 A&C

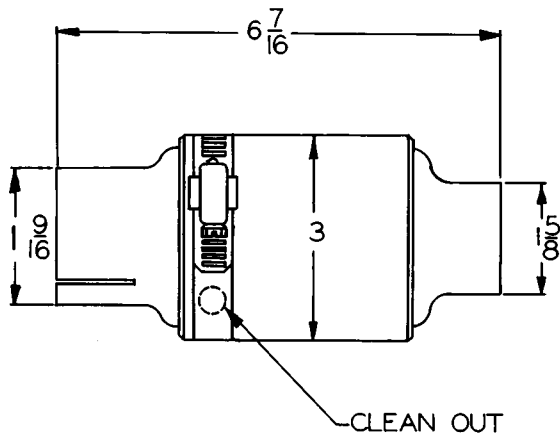


KS 650

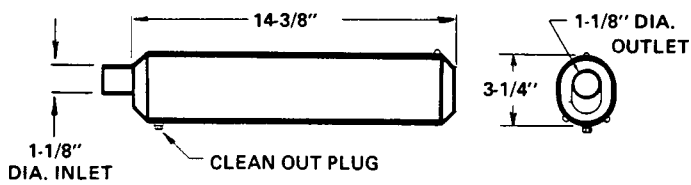


KS 650 A

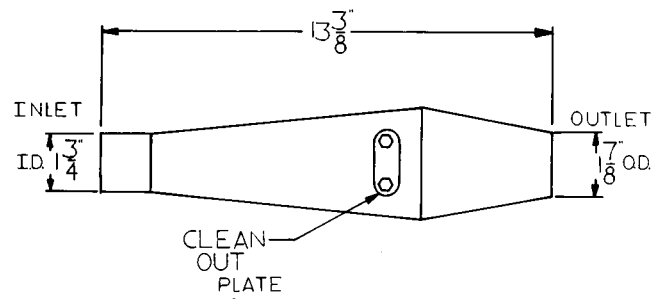
KS 650 C—KS 650 A in oval muffler



KS 650V



KS 650-0

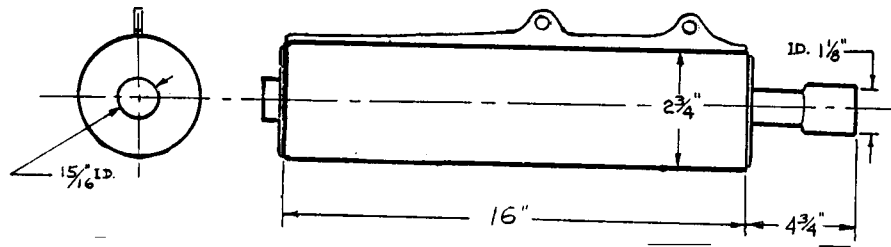


KS 800

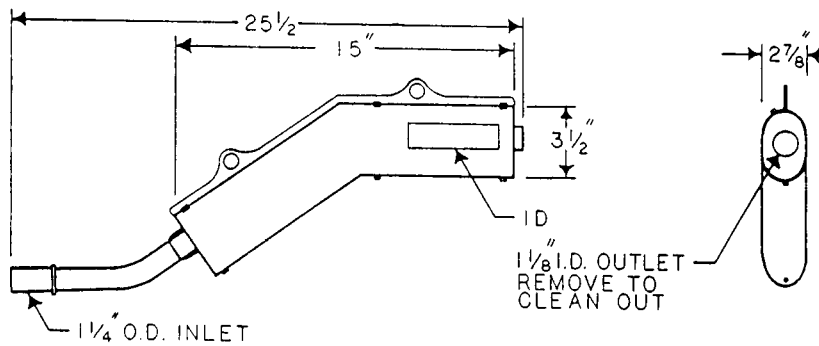
JOHN DEERE

For John Deere AH-75693—See Nelson T-10213
 For John Deere AH-75694—See Nelson T-10214
 For John Deere AH-75695—See Nelson T-10215
 For John Deere AH-80388—See Nelson T-11145
 For John Deere AH-84965—See Nelson T-12499
 For John Deere AH-87289—See Nelson T-11927
 For John Deere AH-32701—See Nelson T-10968
 For John Deere AH-33686—See Nelson T-9605

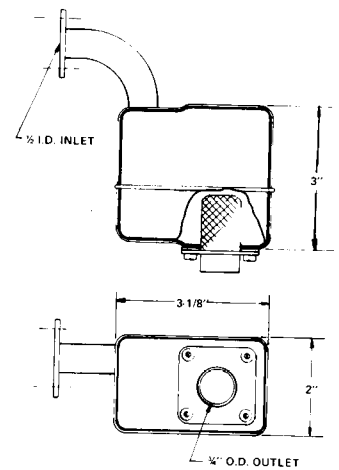
KAWASAKI



DX 200



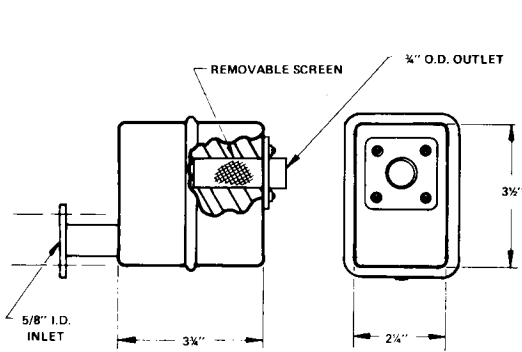
DX 250D



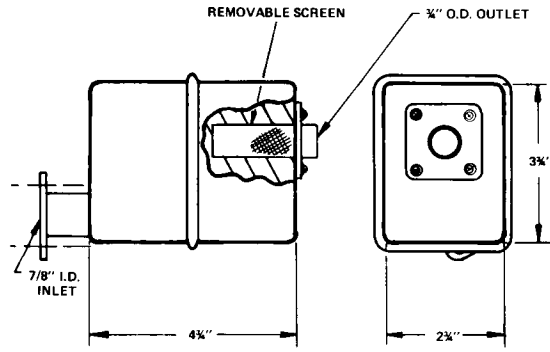
FA76D

KAWASAKI

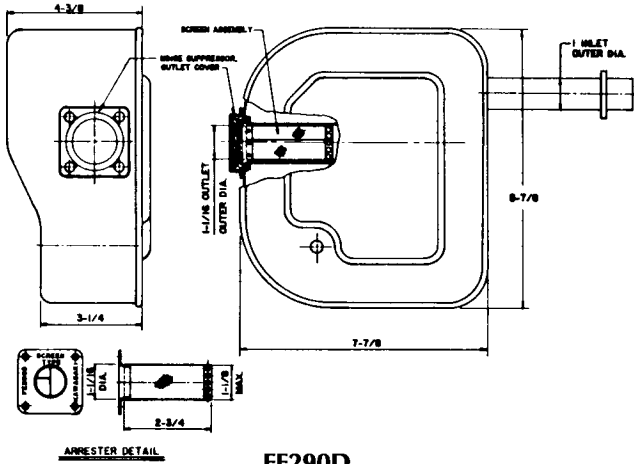
KAWASAKI (continued)



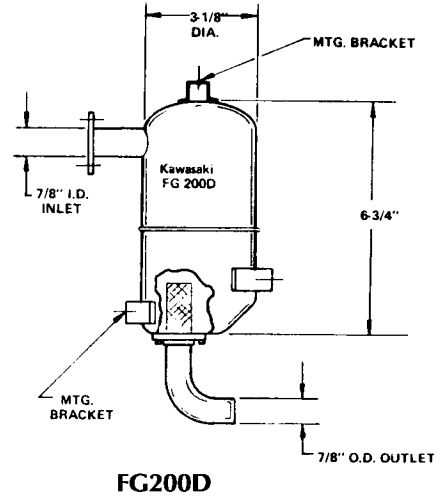
FA130D



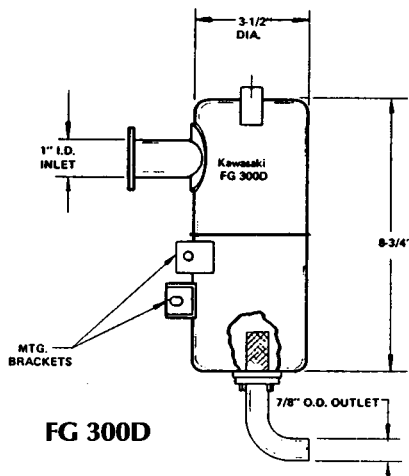
FA210D



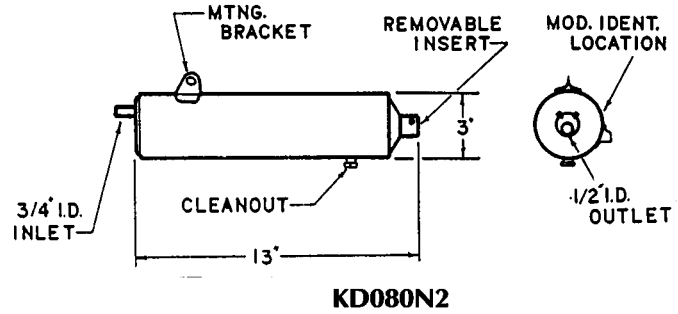
FE290D



FG200D

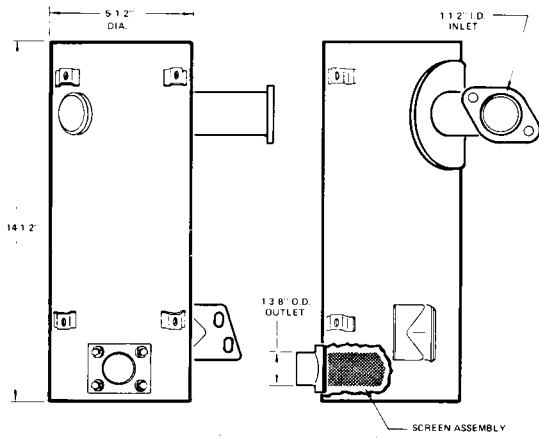


FG 300D

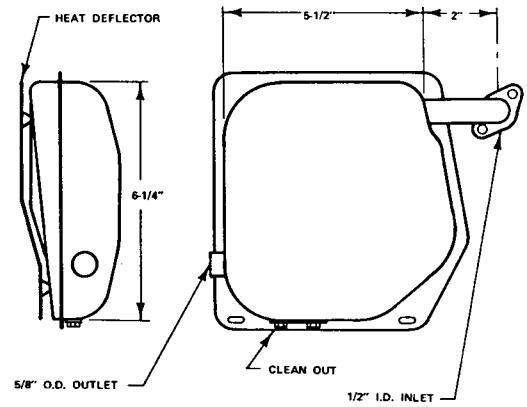


KD080N2

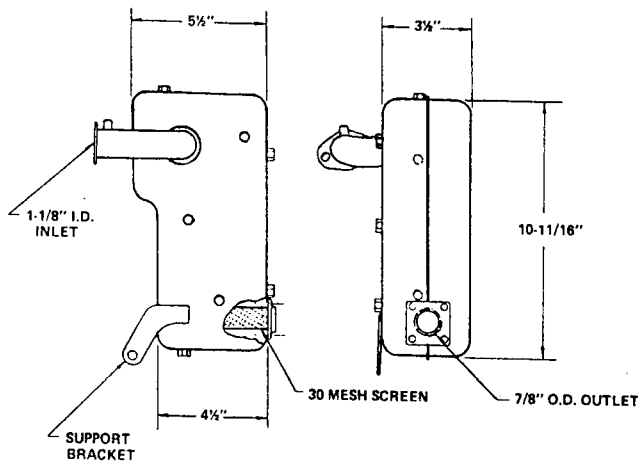
KAWASAKI (continued)



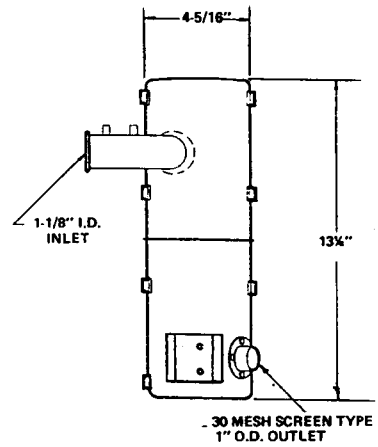
KF-150



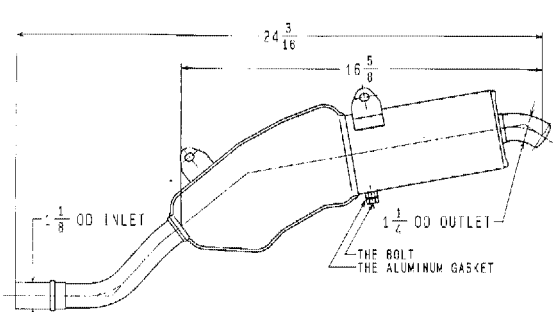
KG-550



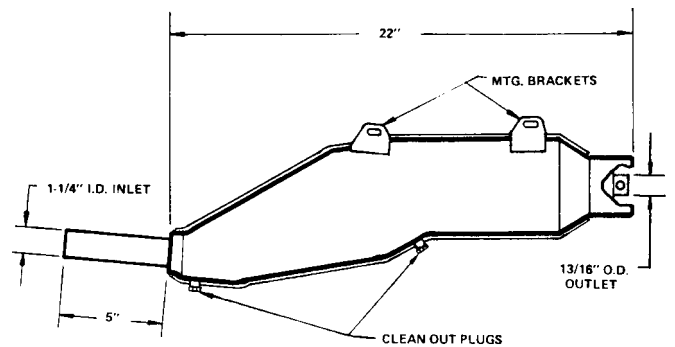
KG-4000



KG-5000



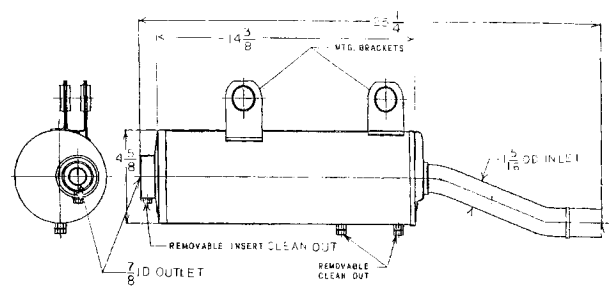
KHI DX200H



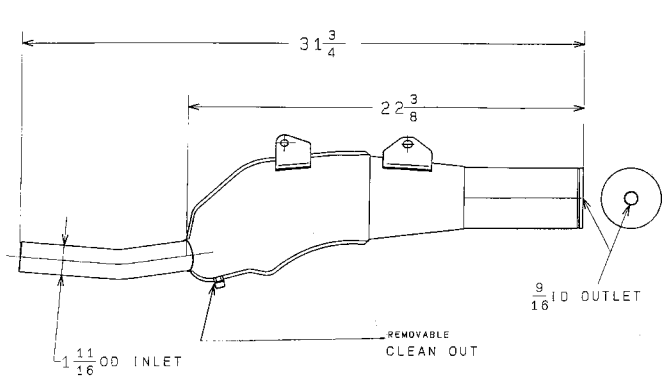
KHI KL250

KAWASAKI

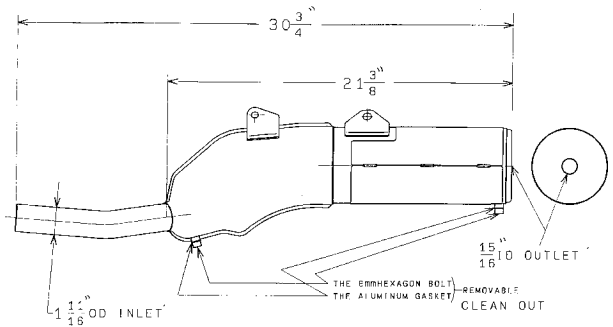
KAWASAKI (continued)



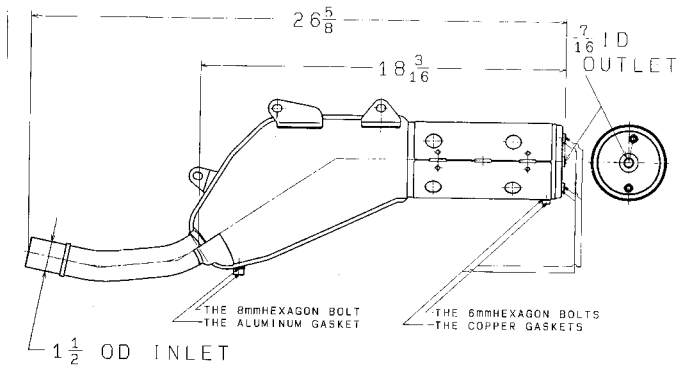
KHI LF 400



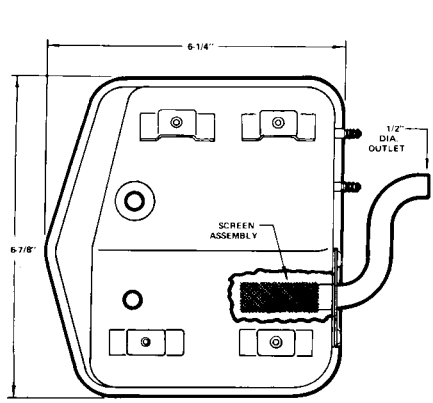
KHI LX 650



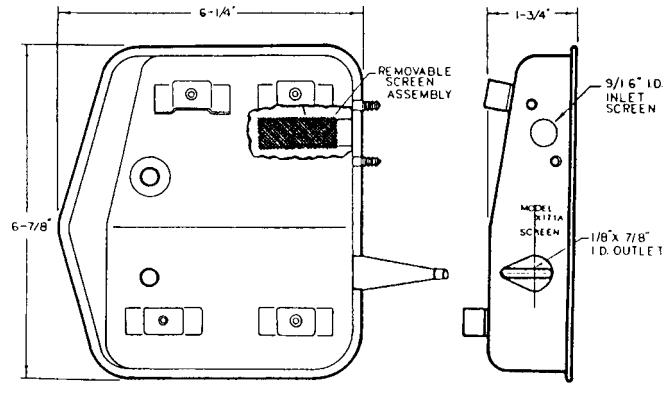
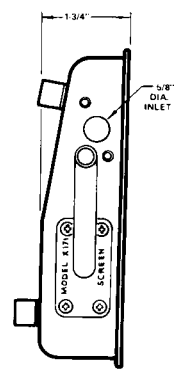
KHI LX650C



KLX 250D

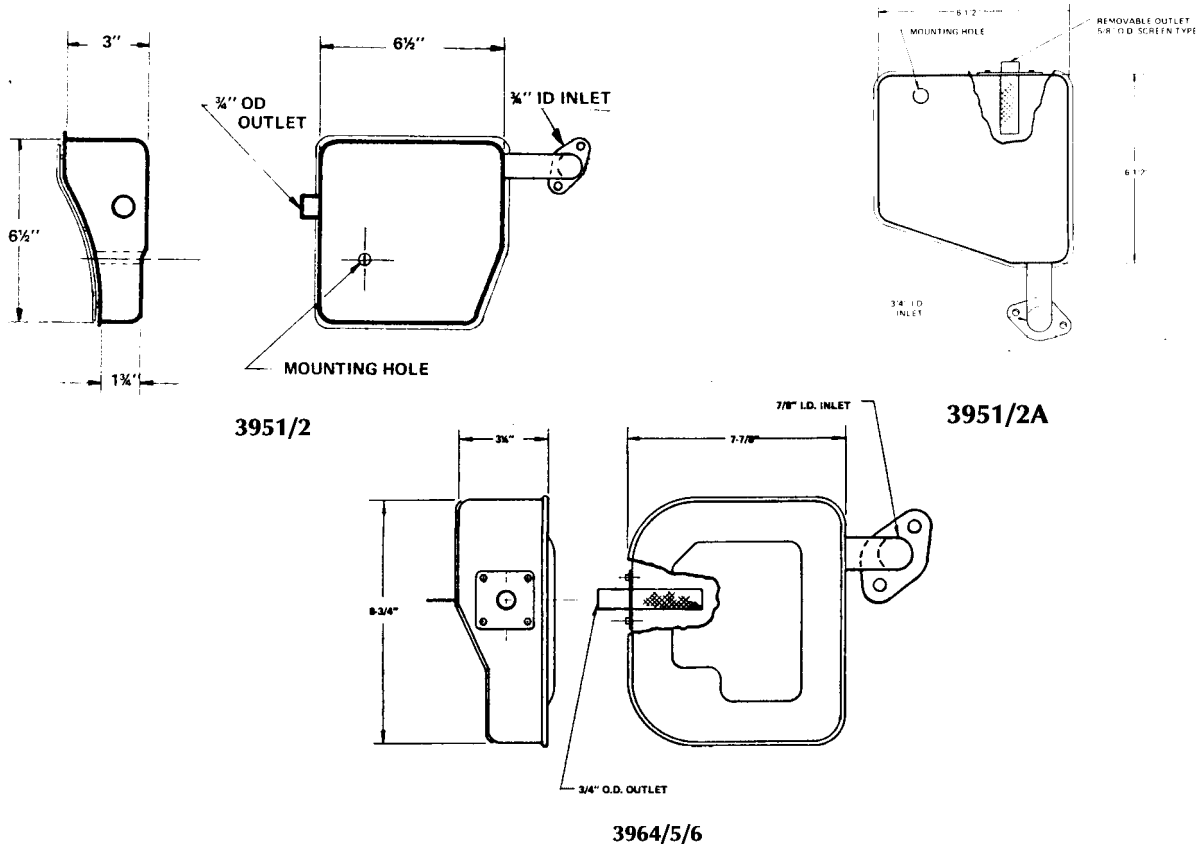


X171

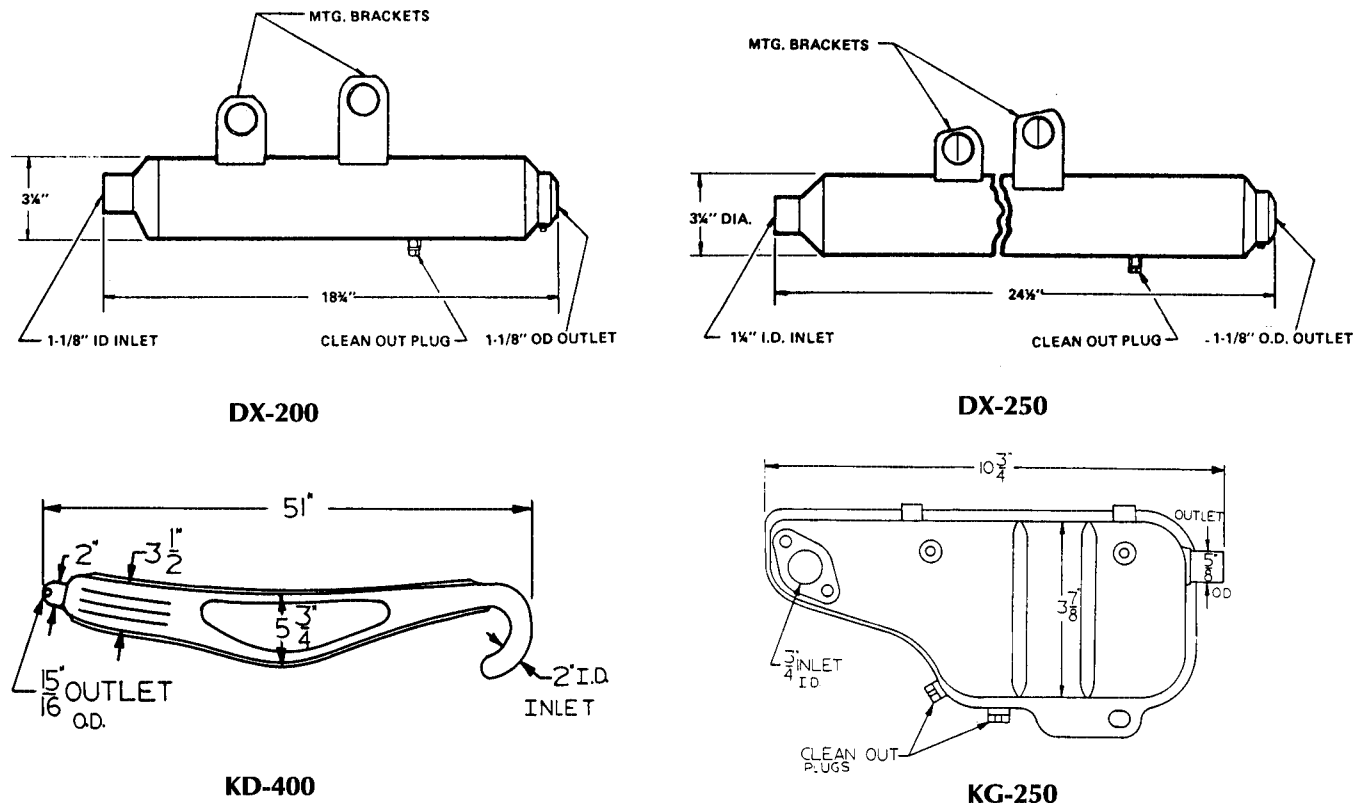


X171 A

KAWASAKI (continued)

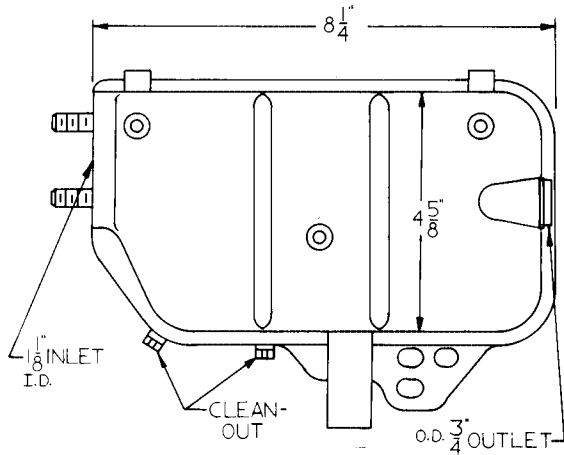


KAWASAKI-KRIZMAN

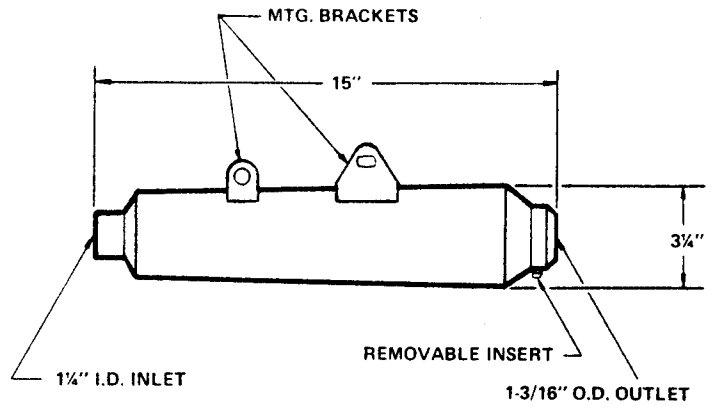


KAWASAKI-KRIZMAN

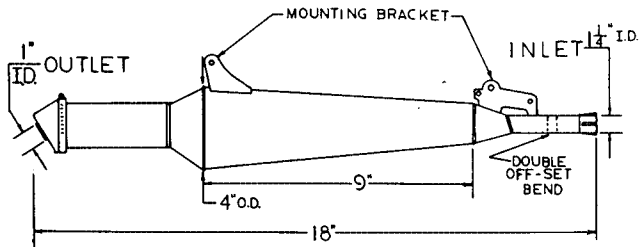
KAWASAKI-KRIZMAN (continued)



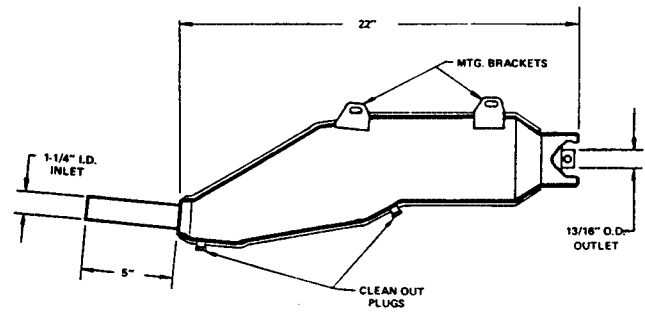
KG-250A



KG 250C

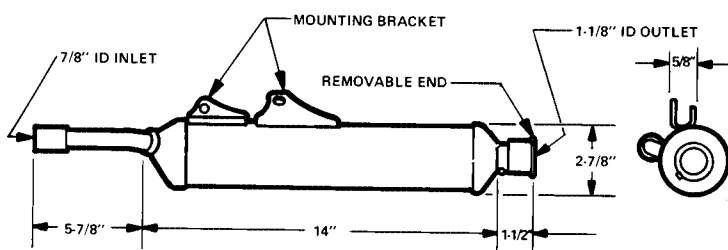


KHI-KE250B

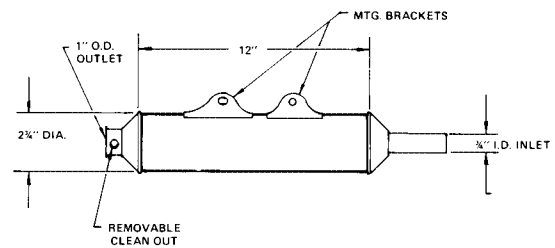


KHI-KL6

For KS-250 see Suzuki- Krizman KS-250

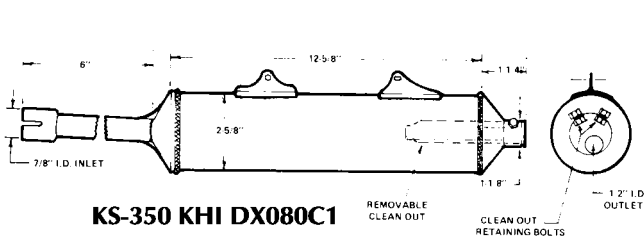


KS-350-KHIDX080A

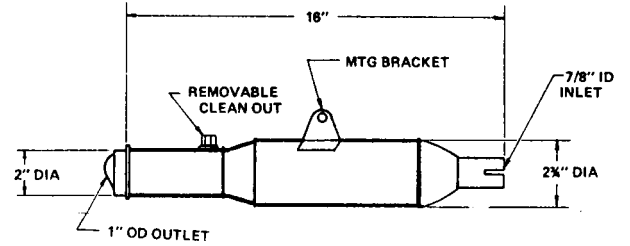


KS-350 KHI DX080C

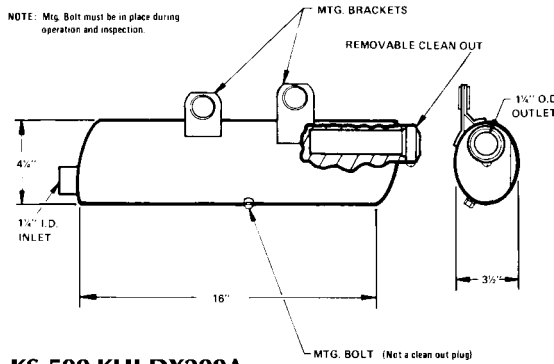
KAWASAKI-KRIZMAN (continued)



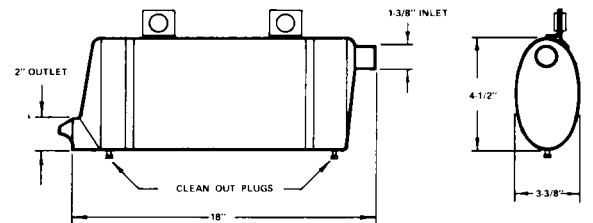
KS-350 KHI DX080C1



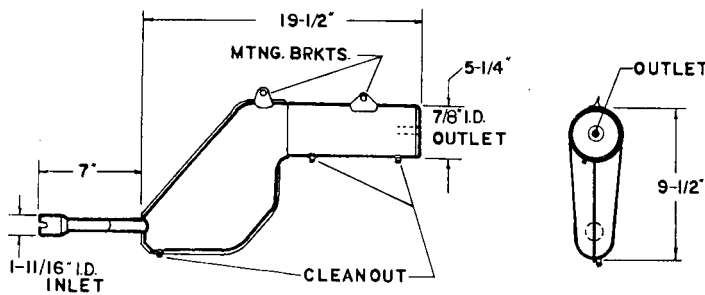
KS-500 KDX 175



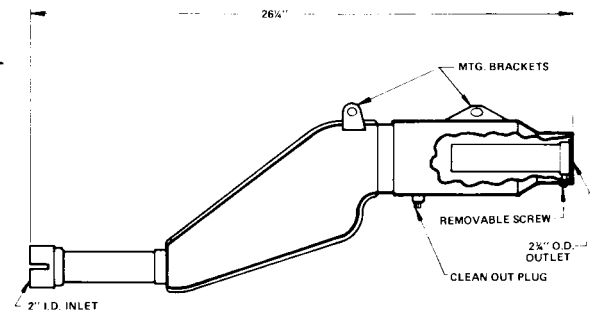
KS-500 KHI DX200A



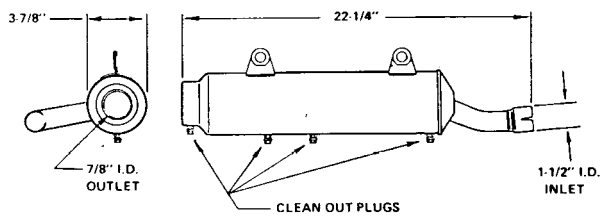
KS-500 KHI DX200C



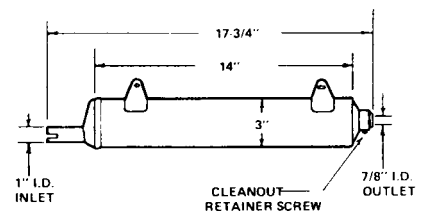
KS-500 KHI KL65



KS-500 KHI KL600



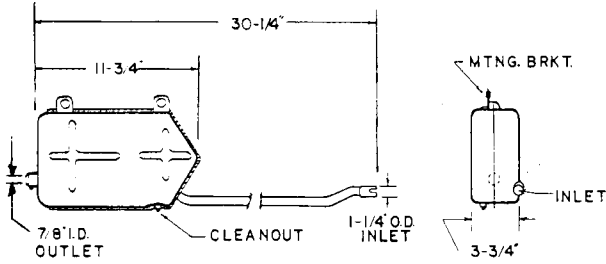
KS-500 KHI KSF250



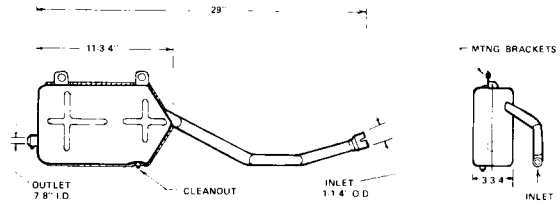
KS-500 KHI LF110

KAWASAKI-KRIZMAN

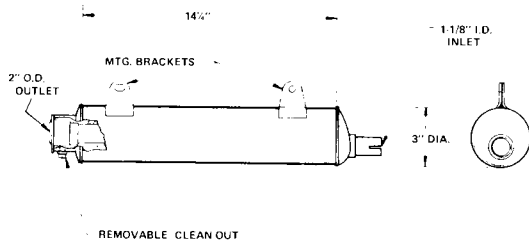
KAWASAKI-KRIZMAN (continued)



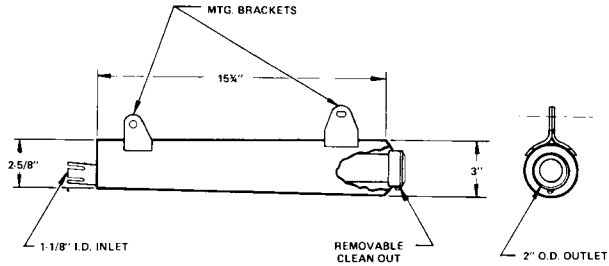
KS-500 KHI LF220



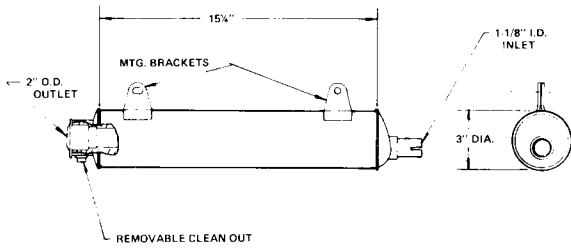
KS-500 KHI LF300C



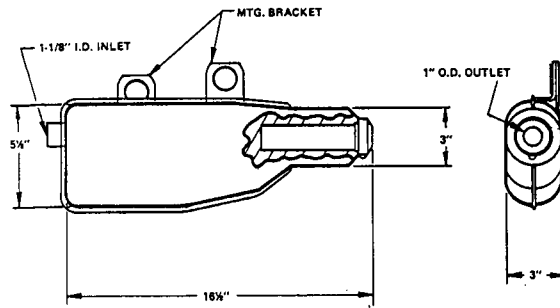
**KS-500 KHI LT110A
KS-500 KHI LT160**



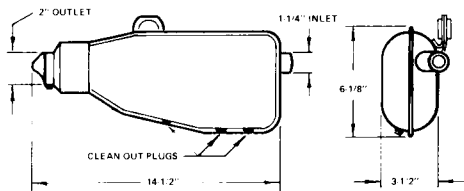
LT 200A



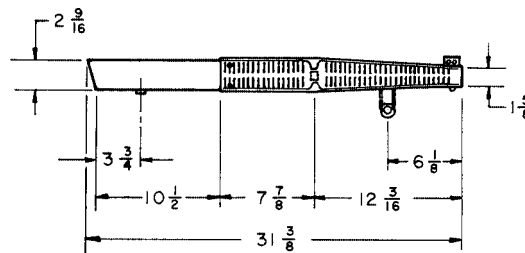
LT 250A



KS-500 KHI XT250

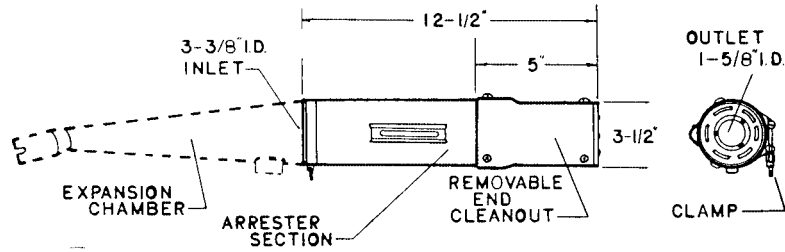


KS-500 KHI XT250B2



YS-80

KERKER

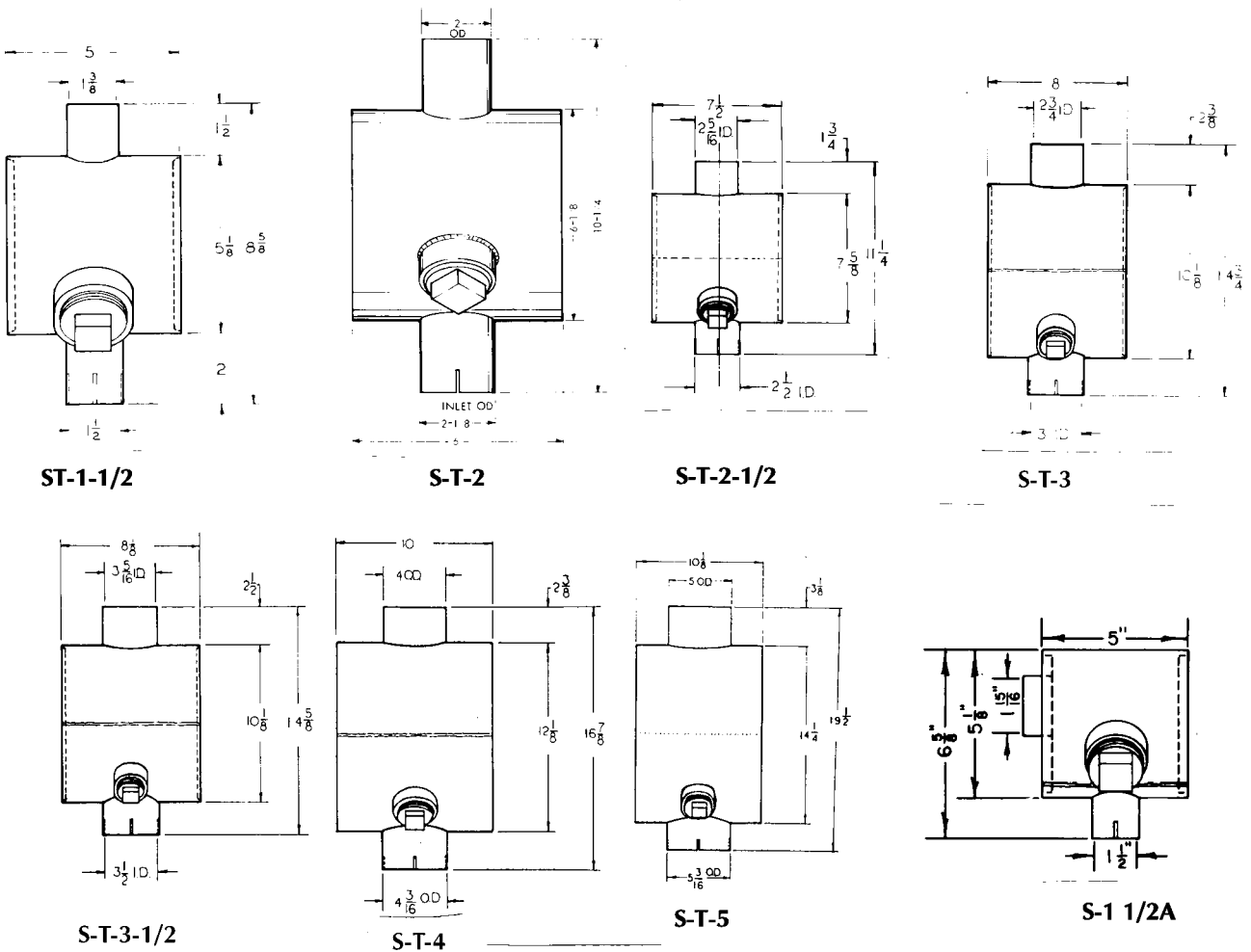


Kerker-Krizman KS-650K

K.C.F.D.

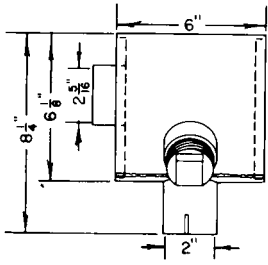
See CEDCO No. 1

KITTELL

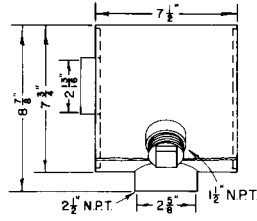


KITTELL

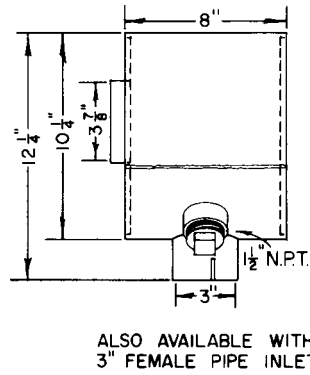
KITTELL (continued)



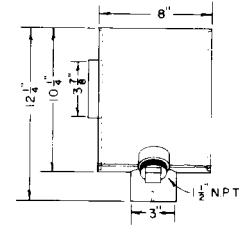
S 2A



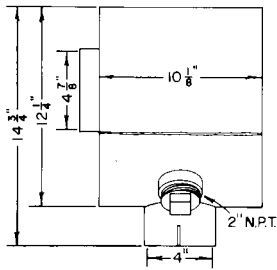
S 2 1/2A



S 3

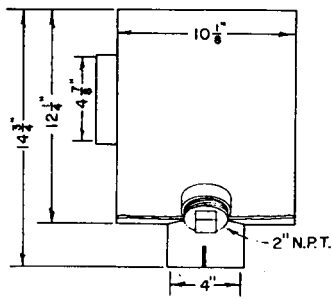


S 3A

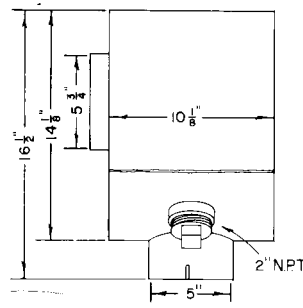


ALSO AVAILABLE WITH
4" FEMALE THREADED
PIPE INLET

S 4

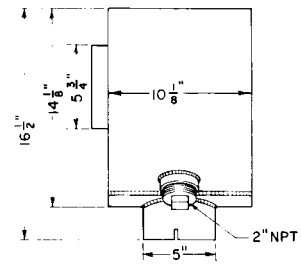


S 4A

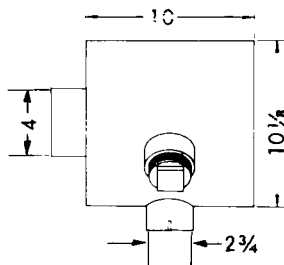


ALSO AVAILABLE WITH
5" FEMALE THREADED
PIPE INLET

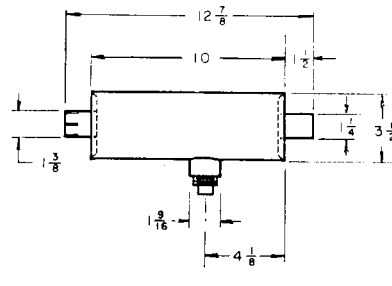
S 5



S 5A



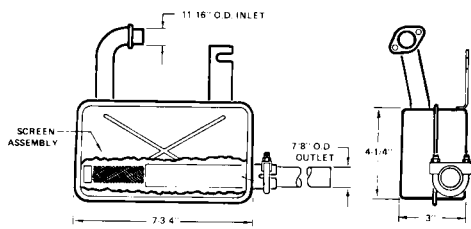
— 1010 HT



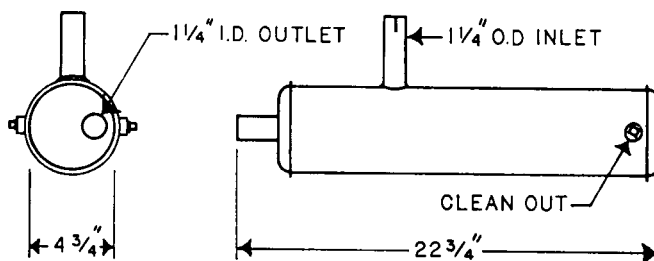
3510-SA 1 1/4

KOHLER

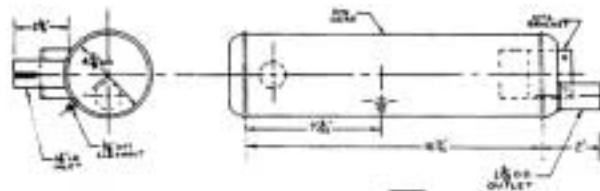
For Kohler 228173—See Nelson 20788



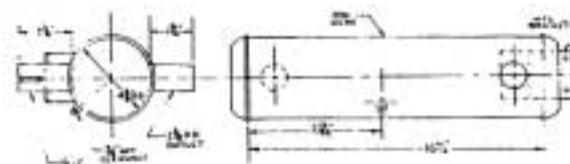
228218



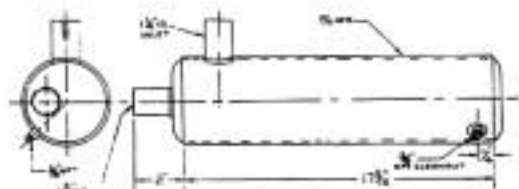
Kohler 239724
Nelson 22755



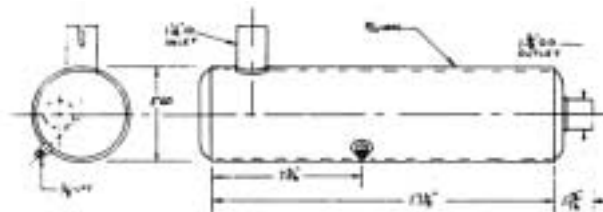
278189



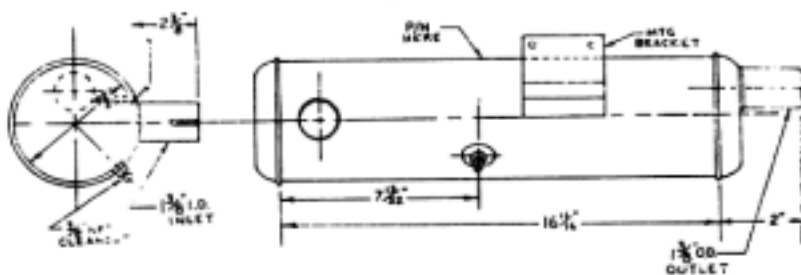
278218



278223



278224



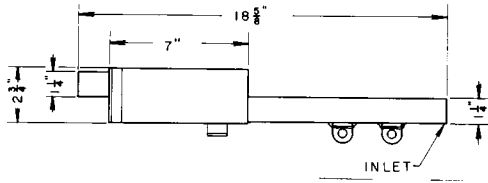
278232

For Kohler 278402—see modified Kohler 278224 (body/arrester horizontal)
 For Kohler 278403—see modified Kohler 278224 (body/arrester horizontal)
 For Kohler 278416—see modified Kohler 278223 (body/arrester horizontal)

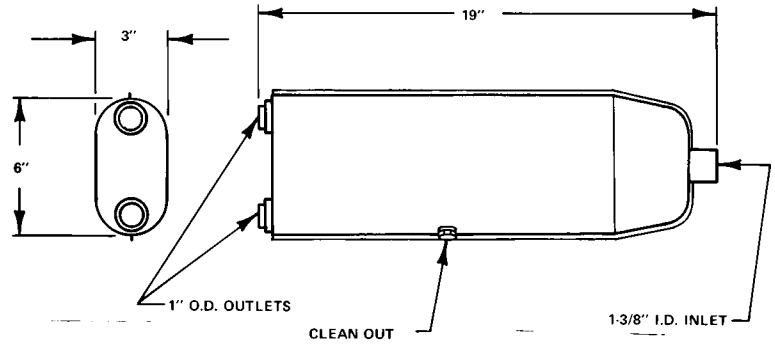
KRIZMAN KSI-WES-KRIZ

KRIZMAN

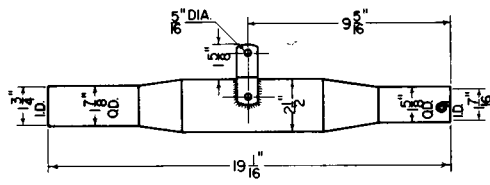
For Krizman KS-650A—See J&R Krizman 650A



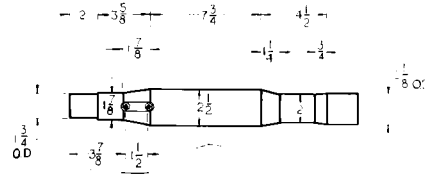
II-5H.34B



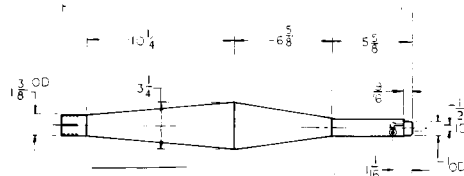
KS-500/250.28.505.01



V-H1

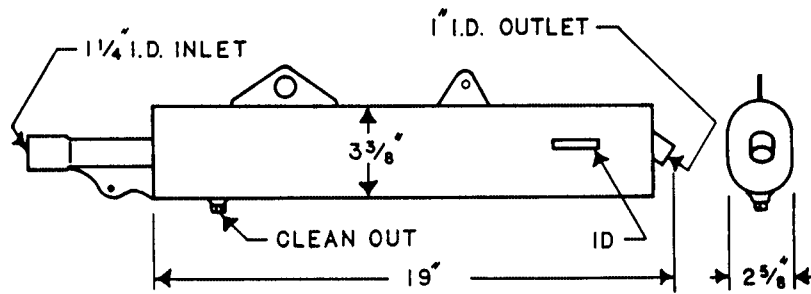


V-H 11



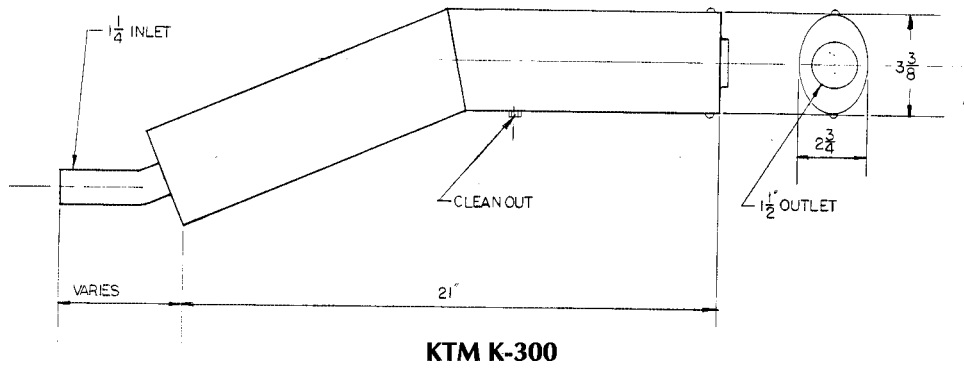
T-H100 or TH100M

KSI-WES-KRIZ

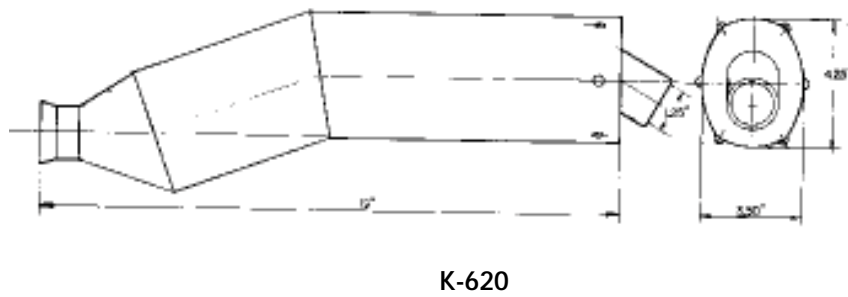


KS-650-K

KTM

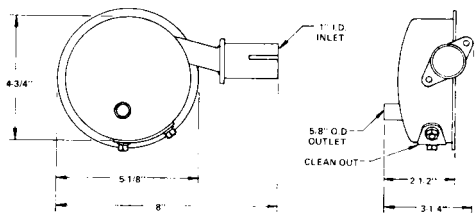


KTM SPORT MOTORCYCLE

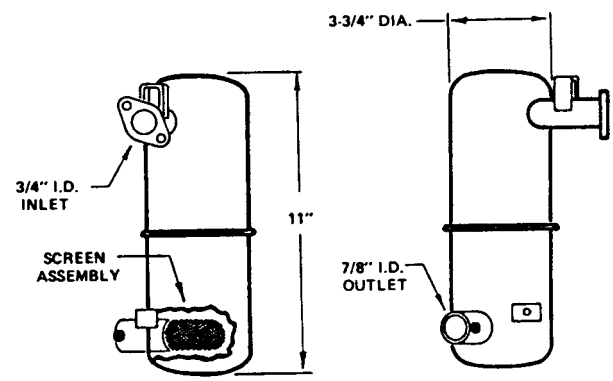


KUBOTA

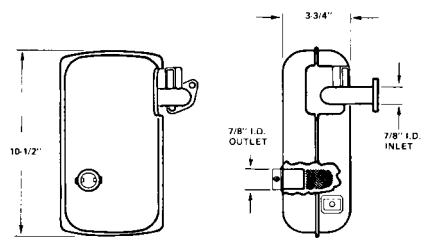
KUBOTA



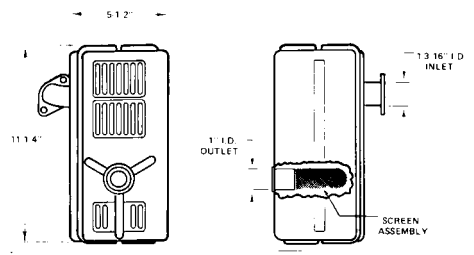
8501A



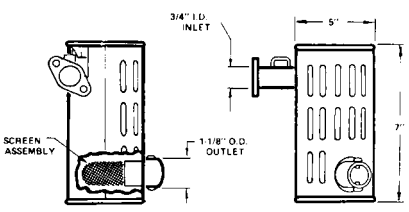
8502C



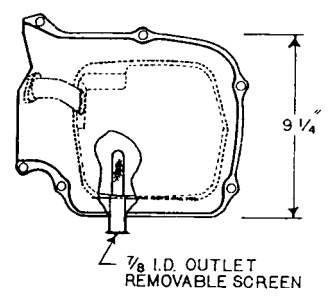
8503C



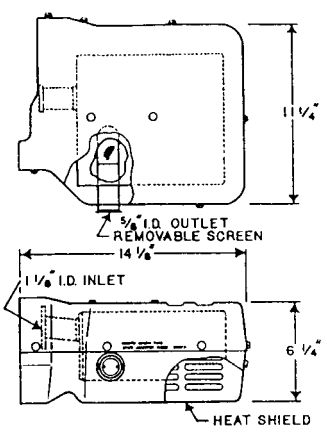
8504C



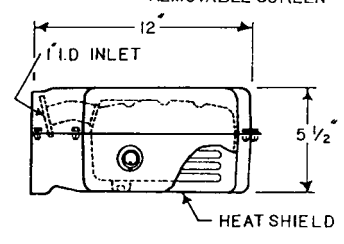
8505B



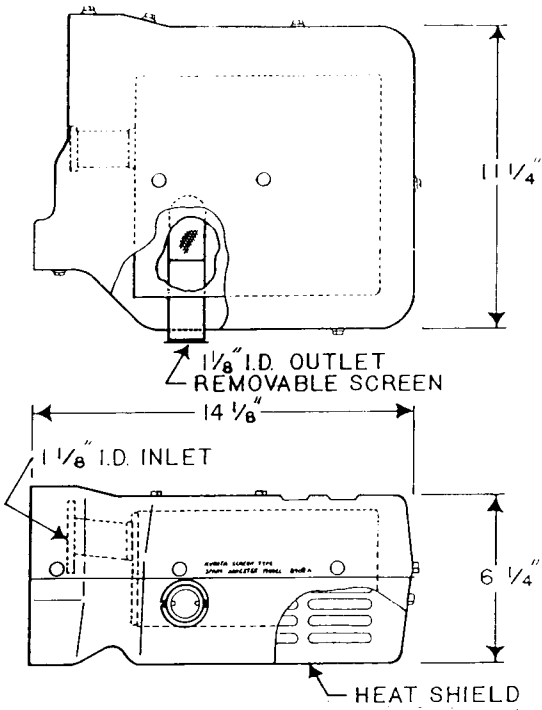
8907A



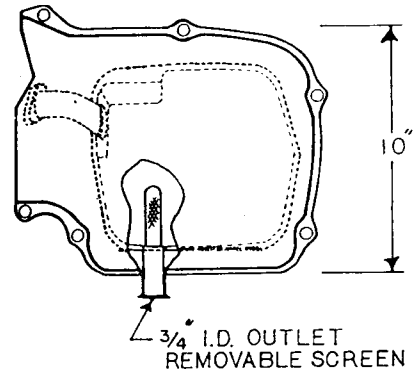
8906A



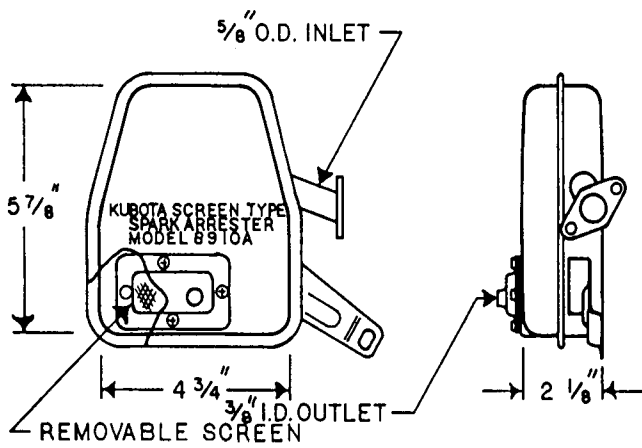
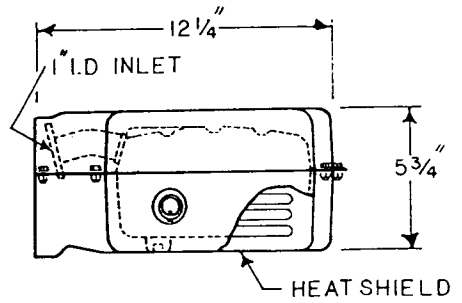
KUBOTA (continued)



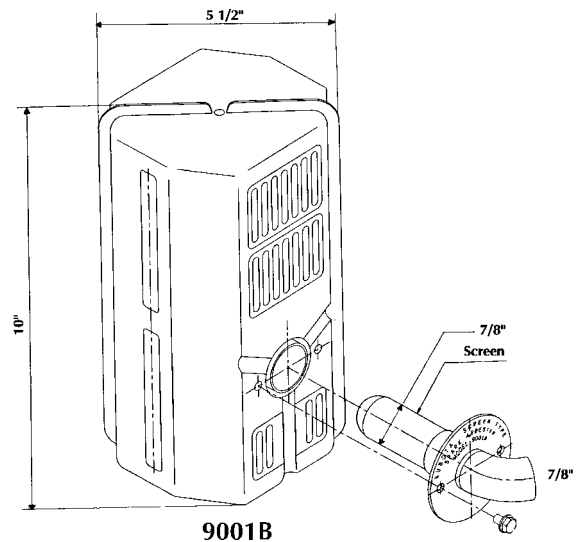
8908A



8909A



8910A



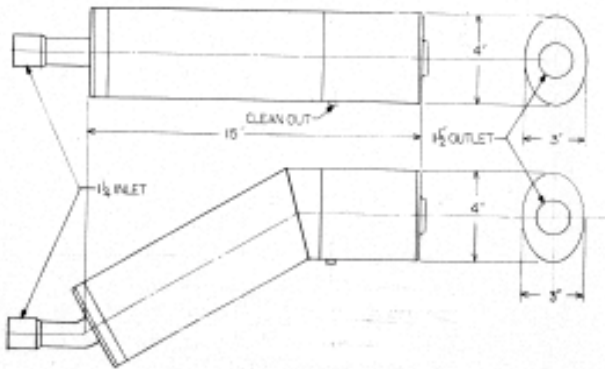
9001B

MAGNUM-KRIZMAN MAGNUM RACING/MAREMONT/MAXIM

MAGNUM-KRIZMAN

KS-650A—See J&R Krizman 650A

MAGNUM RACING

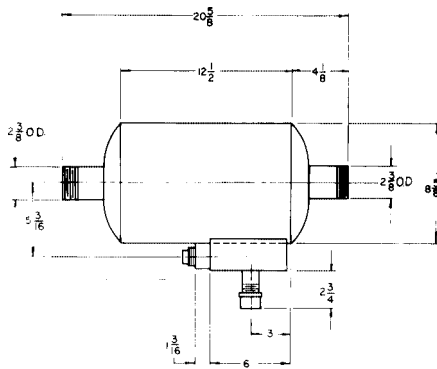


KS 650-M

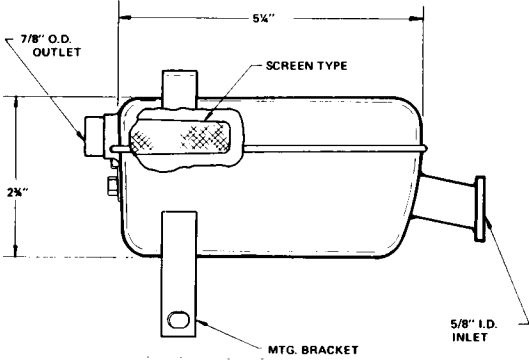
MAREMONT ⊕

For Maremont 4305—See Donaldson FCM 06-0037
For Maremont 4306—See Donaldson FCM 06-5030
For Maremont 4307—See Donaldson FCM 07-0068
For Maremont 4308—See Donaldson FCM 07-0069
For Maremont 4604—See Donaldson FCM 08-0024
For Maremont 4605—See Donaldson FCM 09-0091

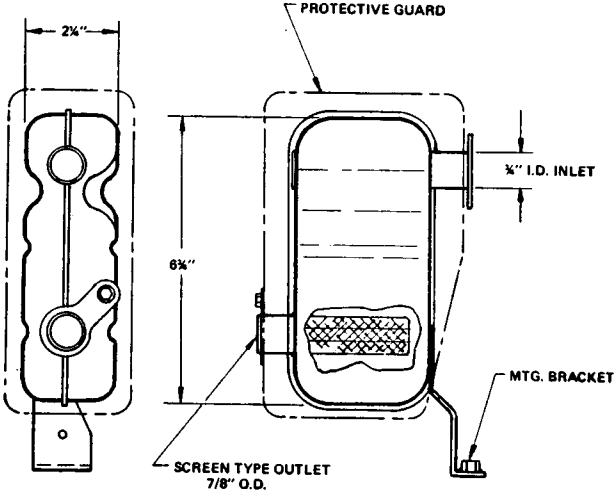
MAXIM



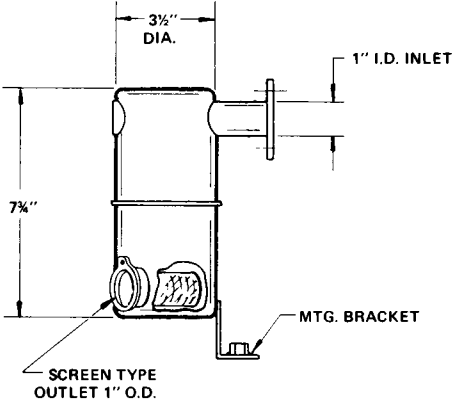
2" MSA1



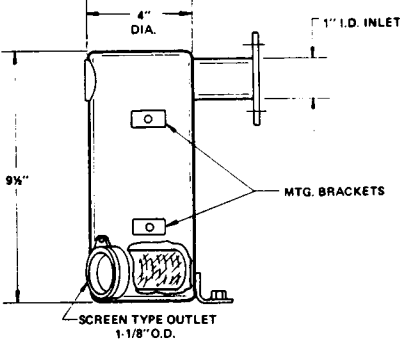
MPP 600E/800E



MPP 1500E



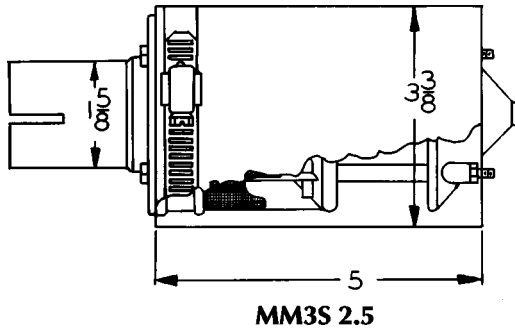
MPP 2300E



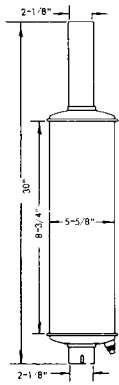
MPP 3500E

MURPHY NELSON

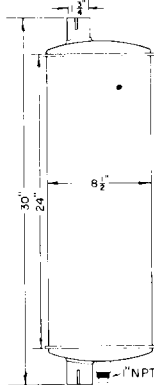
MURPHY



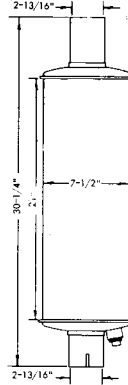
NELSON NM



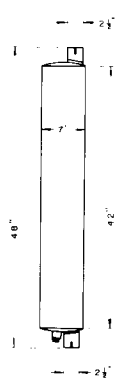
T-6277



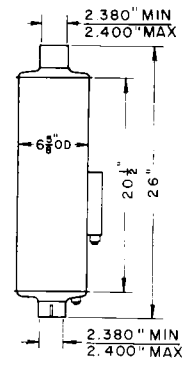
T-7033



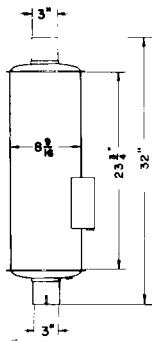
T-7359



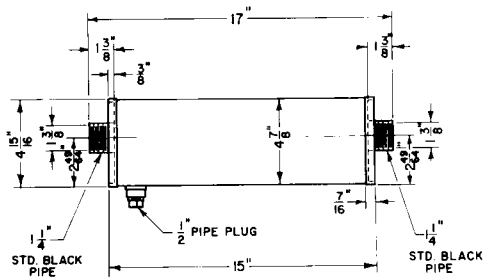
T-7515



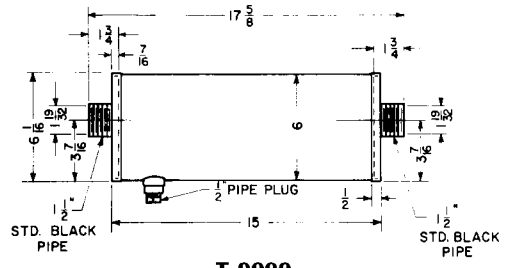
T-8680



T-8714

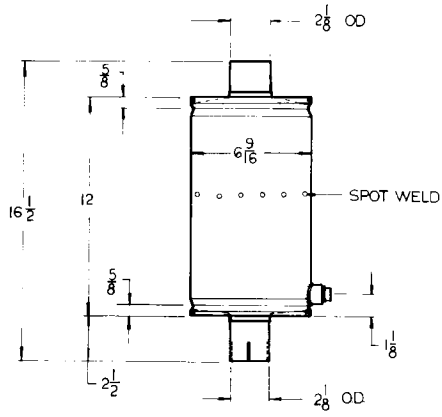


T-9098

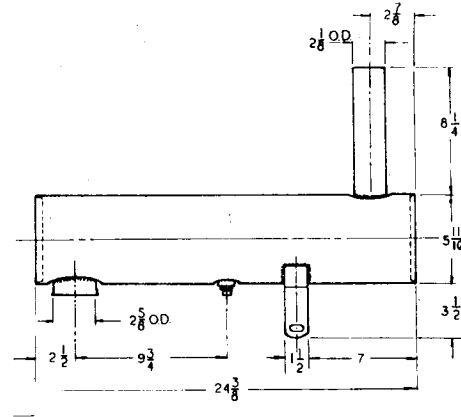


T-9099

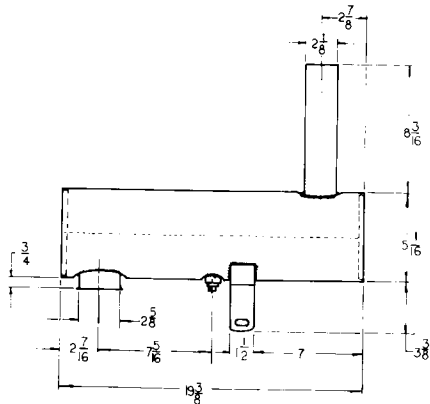
NELSON (continued)



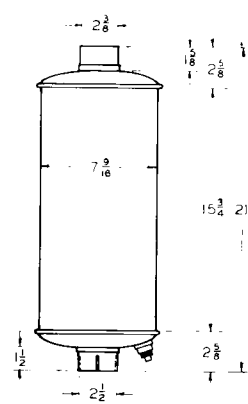
T-9213



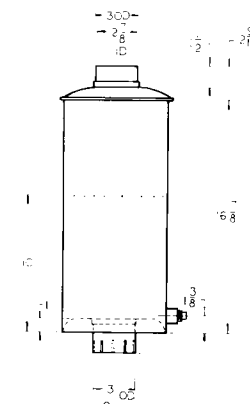
T-9219



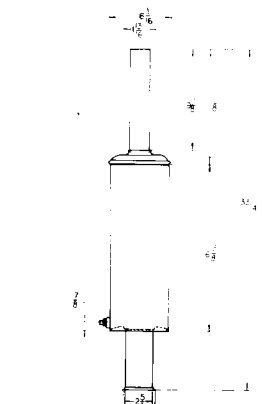
T-9220



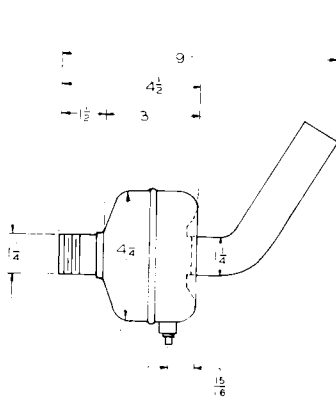
T-9304



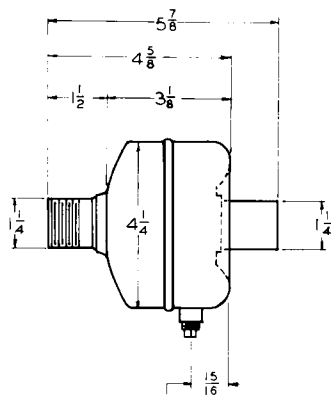
T-9356



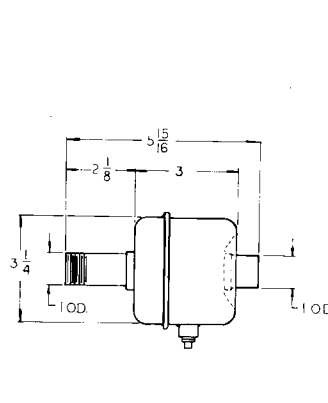
T-9370



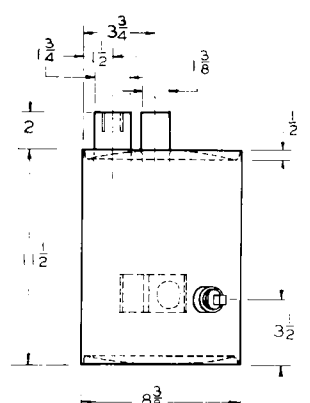
T-9457



T-9458

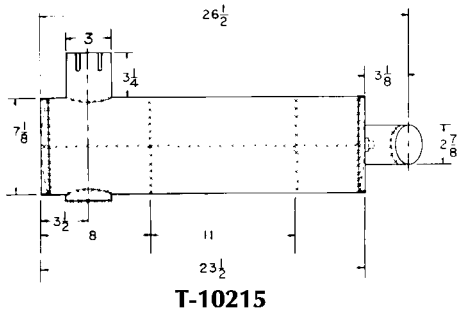


T-9460

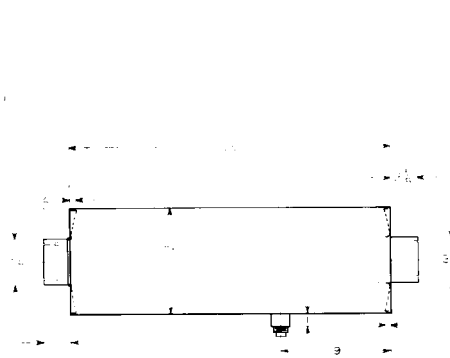


T-9489

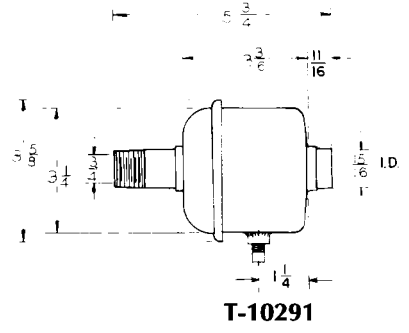
NELSON (continued)



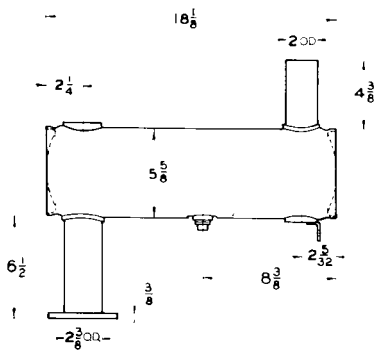
T-10215



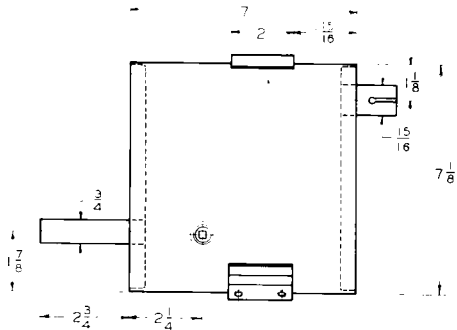
T-10244



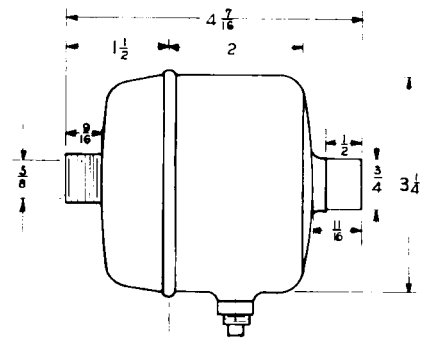
T-10291



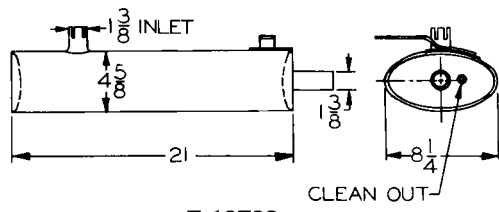
T-10374



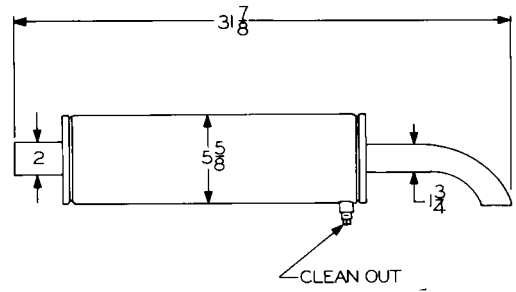
T-10409



T-10705



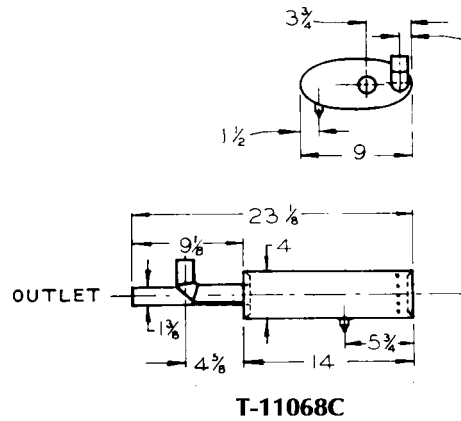
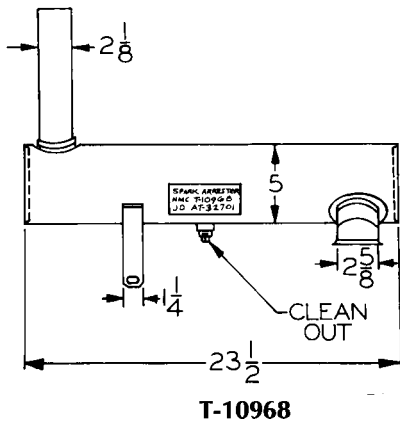
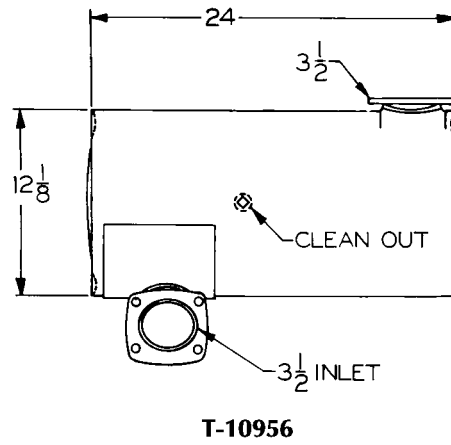
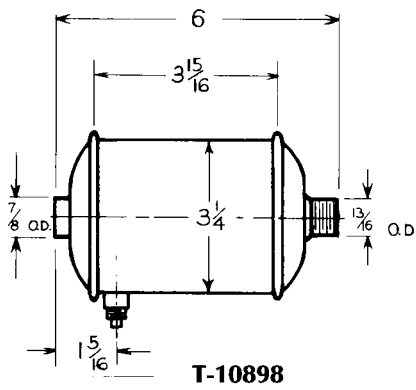
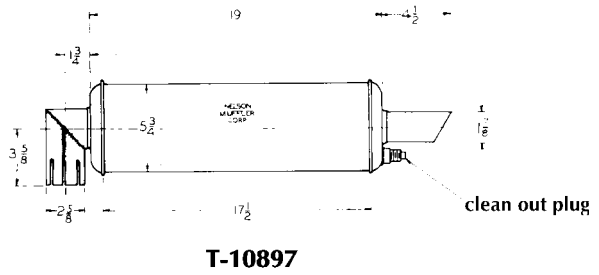
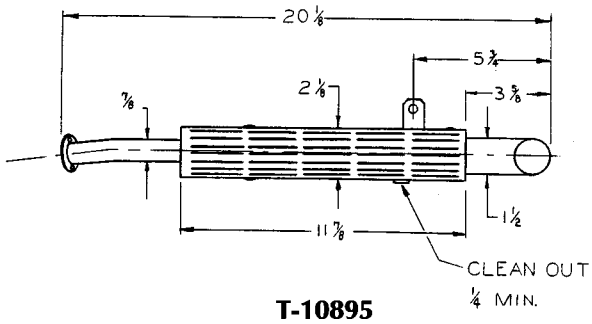
T-10792



T-10860

NELSON

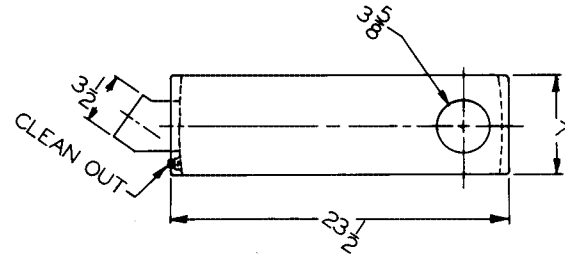
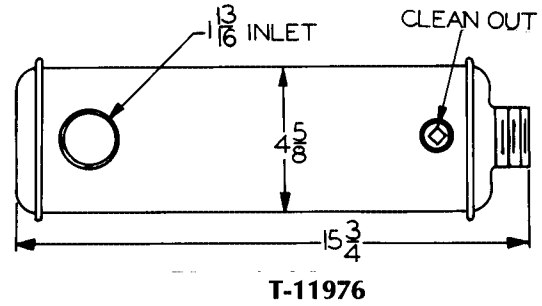
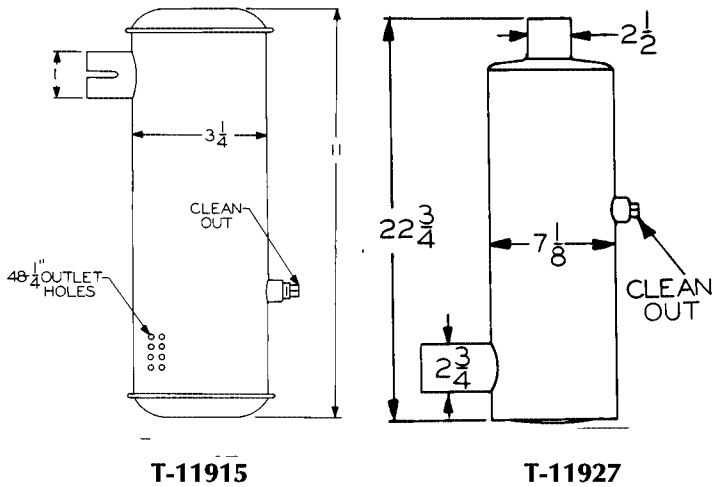
NELSON (continued)



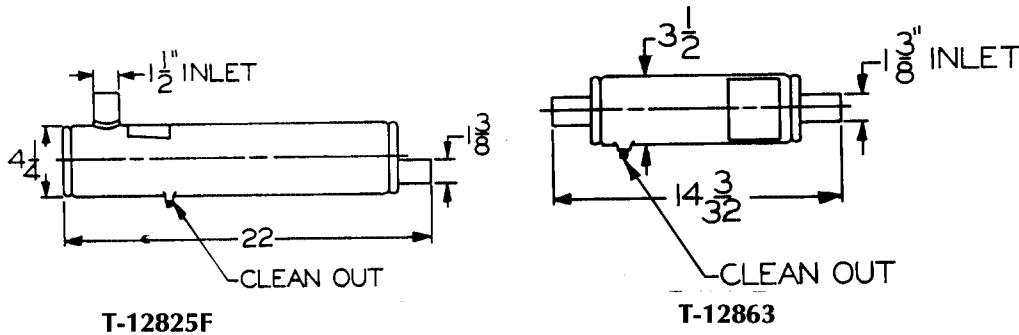
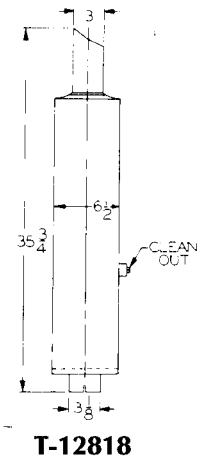
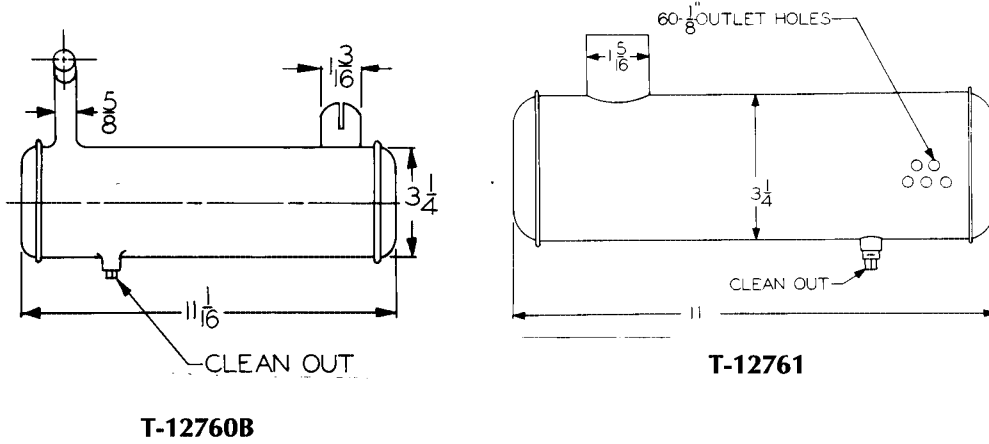
NELSON

NELSON (continued)

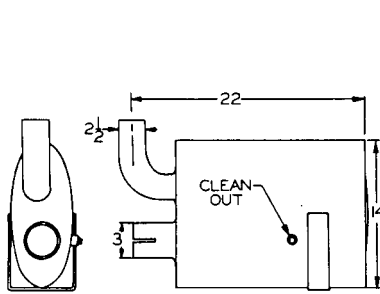
FOR NELSON T-11842—SEE T-10956



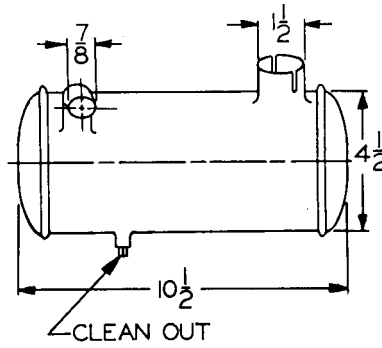
FOR NELSON T-12502—SEE T-10115



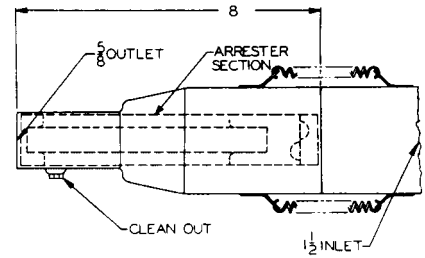
NELSON (continued)



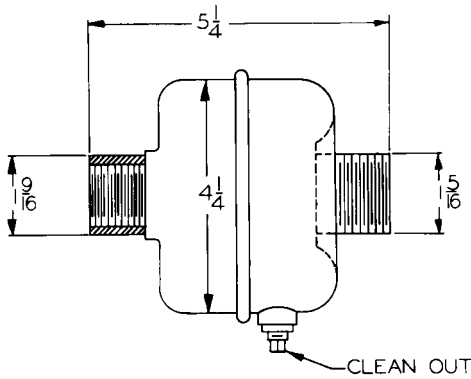
T-13109



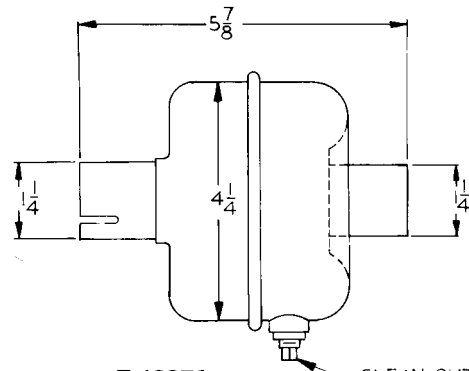
T-13265



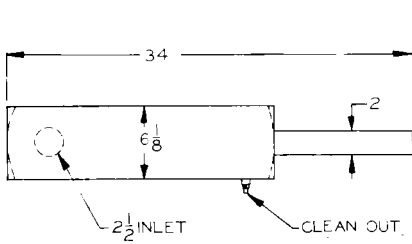
T-13300



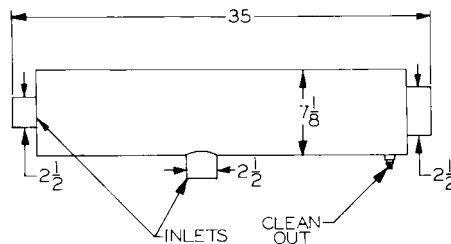
T-13304



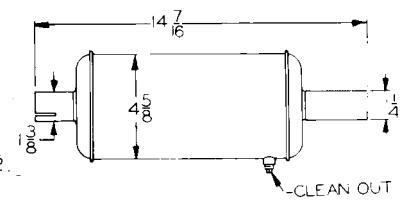
T-13376



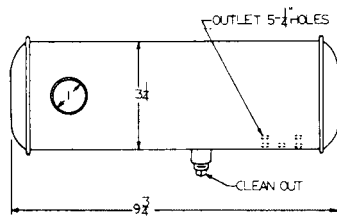
T-13473



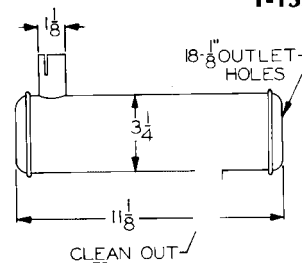
T-13502



T-13529



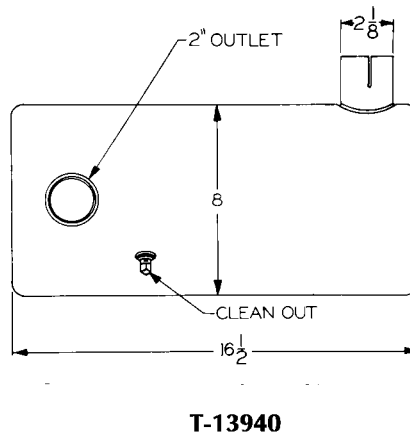
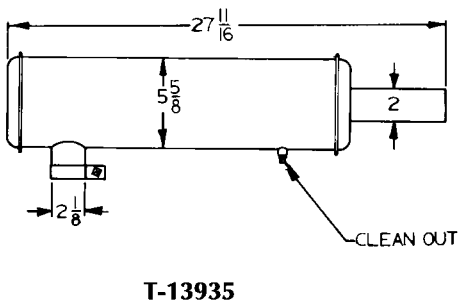
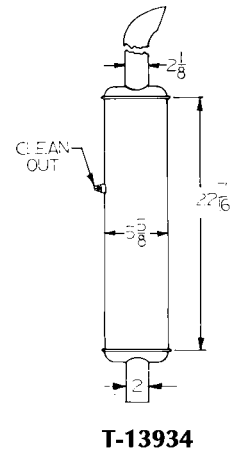
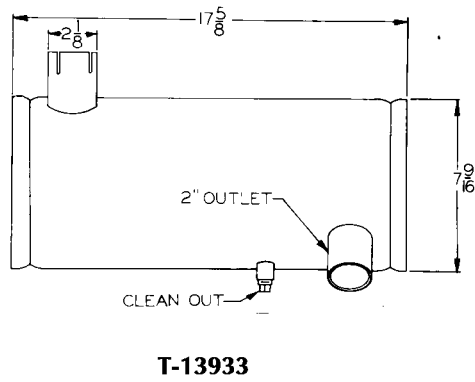
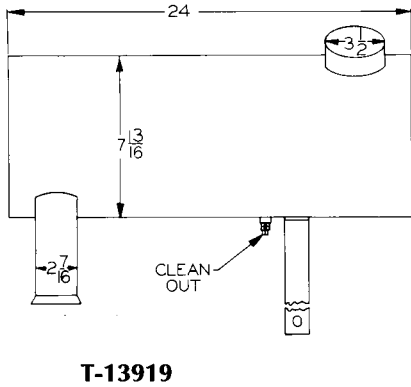
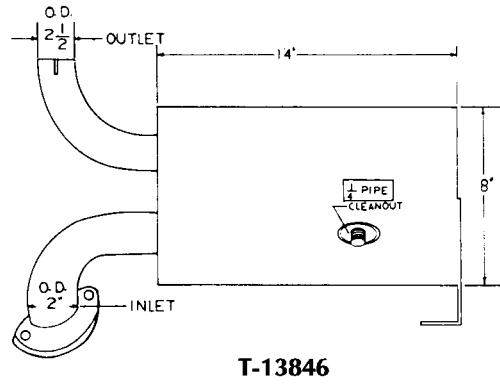
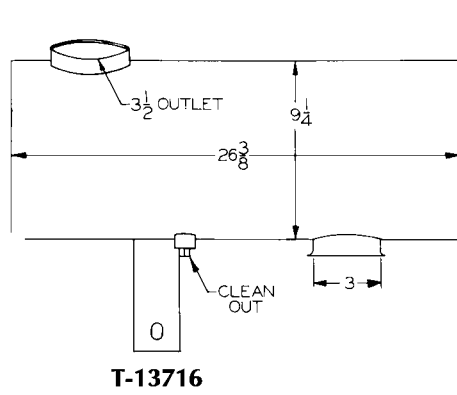
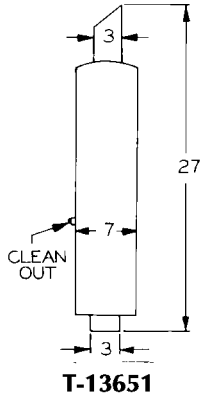
T-13559



T-13572

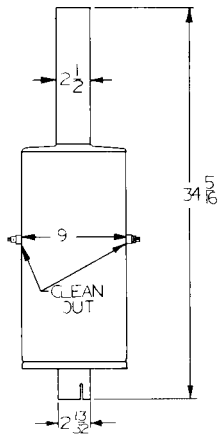
NELSON

NELSON (continued)

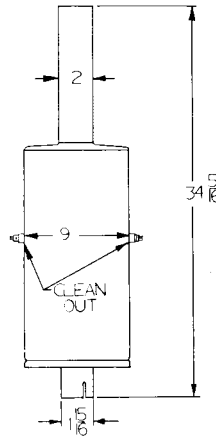


FOR NELSON T-13944—SEE T-10291

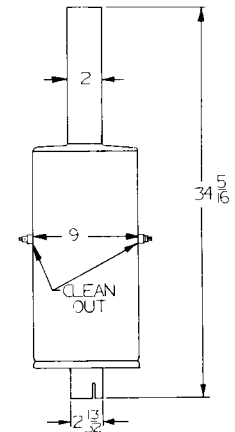
NELSON (continued)



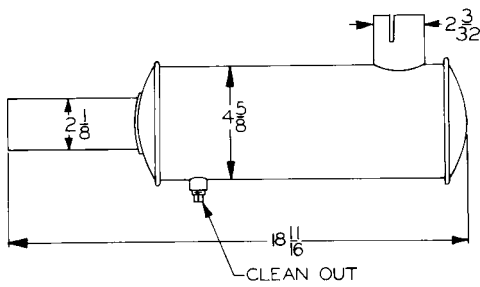
T-13977



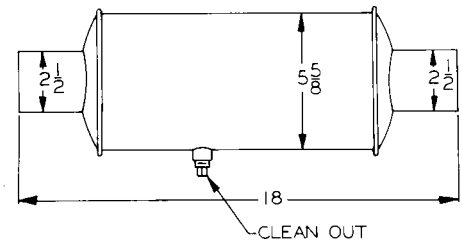
T-13978



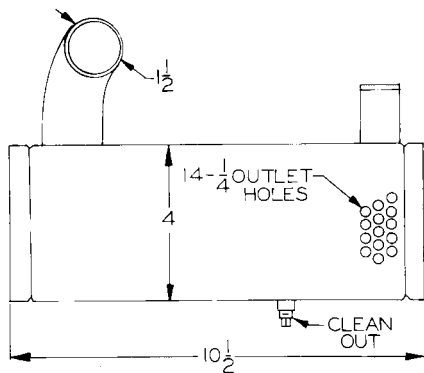
T-13979



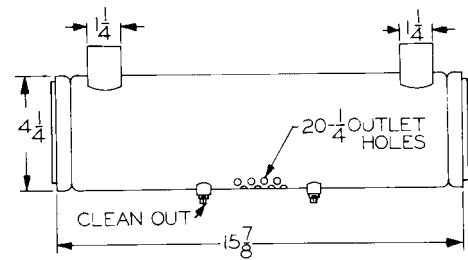
T-13994



T-13995



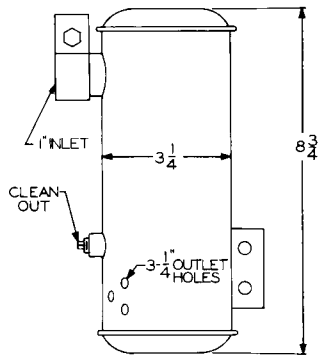
T-13999



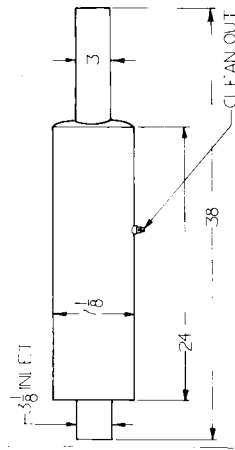
T-14000

NELSON

NELSON (continued)

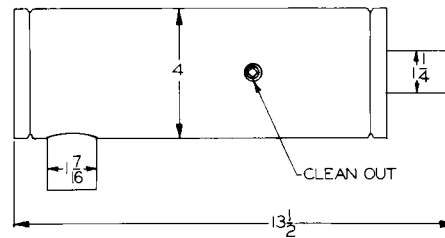


T-14002

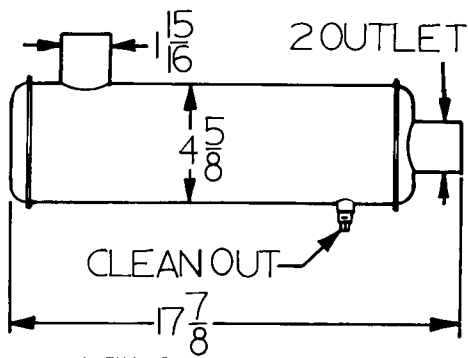


T-14005

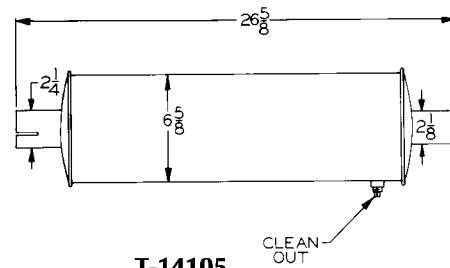
For Nelson T-14066—See T-9213



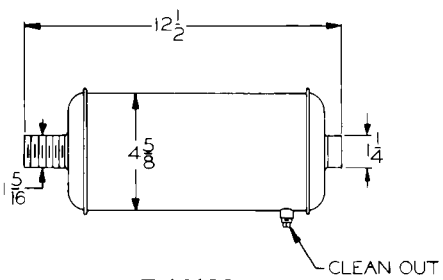
T-14090



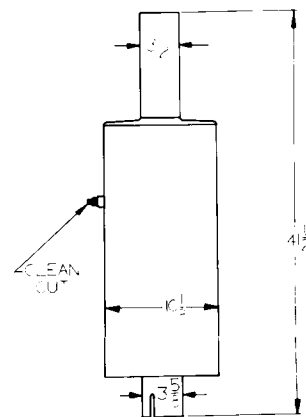
T-14099



T-14105

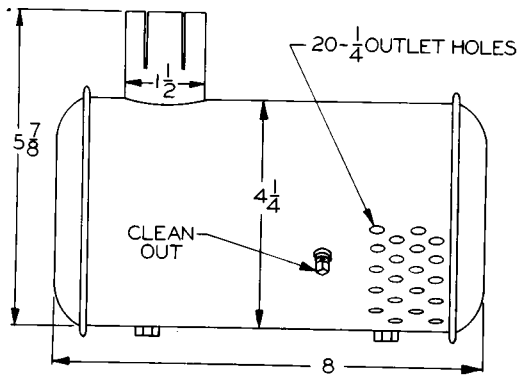


T-14106

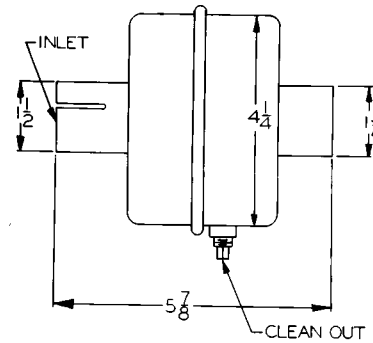


T-14110B

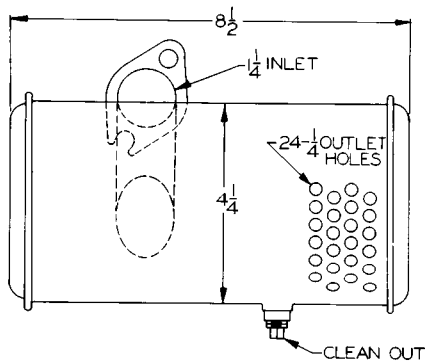
NELSON (continued)



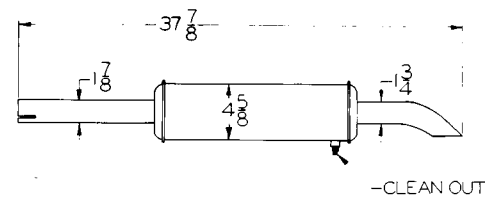
T-14116



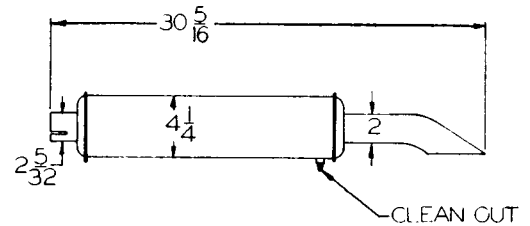
T-14123



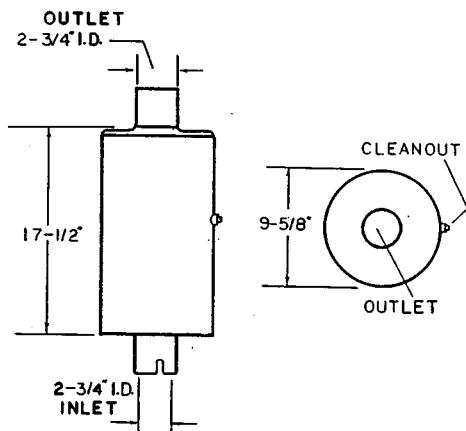
T-14125



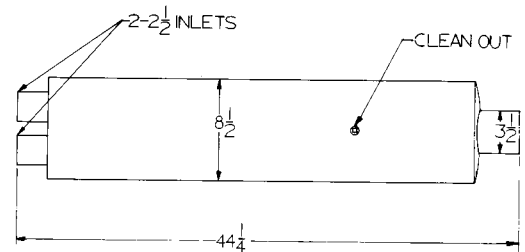
T-14214



T-14217



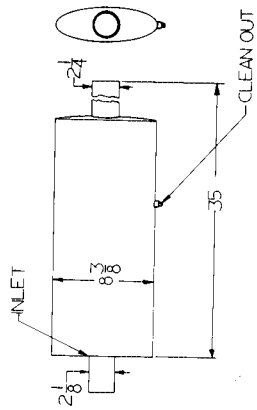
T-14219



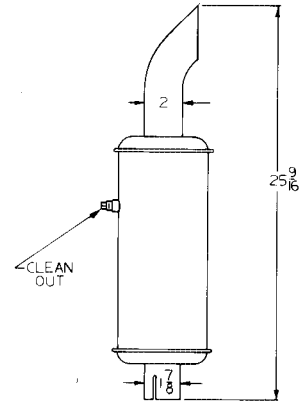
T-14220

NELSON

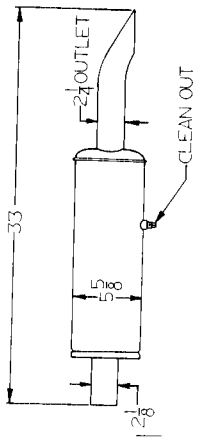
NELSON (continued)



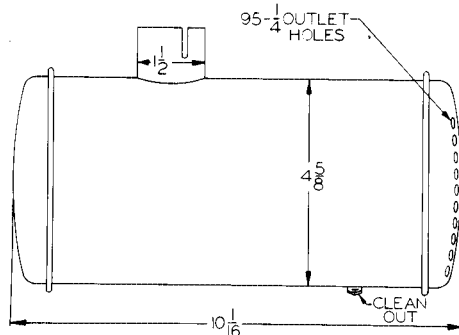
T-14222



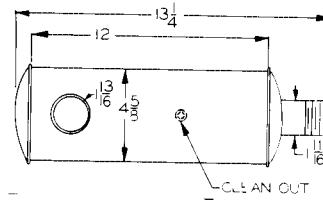
T-14223



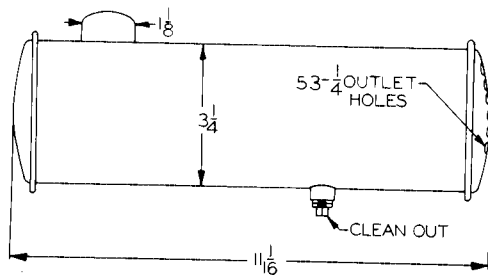
T-14224



T-14315

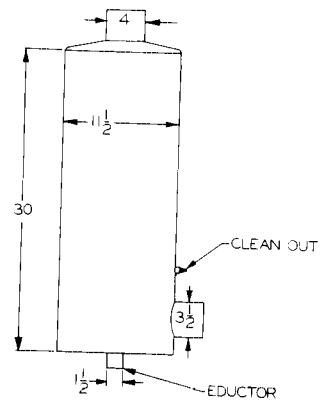


T-14316



T-14321

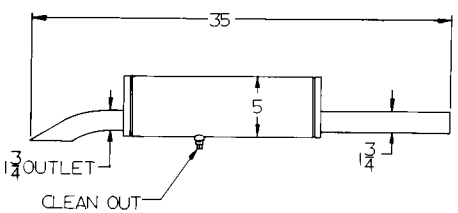
FOR NELSON T-14327—SEE T-12499



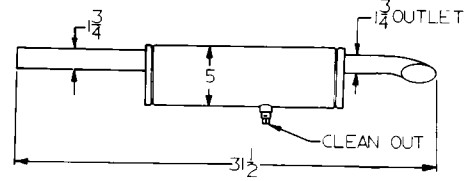
T-14334

FOR NELSON T-14382—SEE T-10244

NELSON (continued)

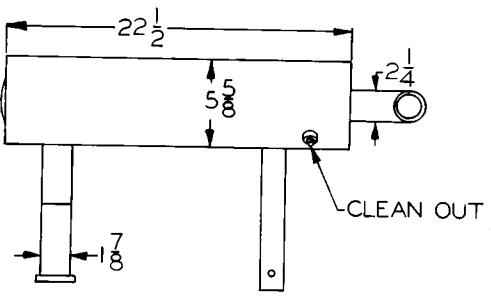


T-14402



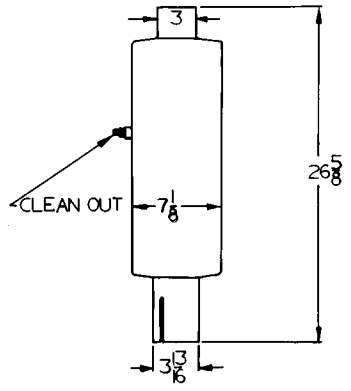
T-14403

FOR NELSON T-14406—SEE T-13529

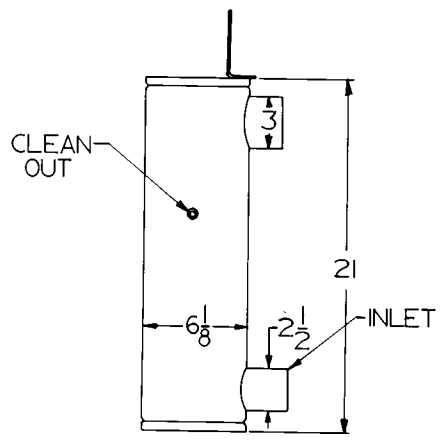


T-14415

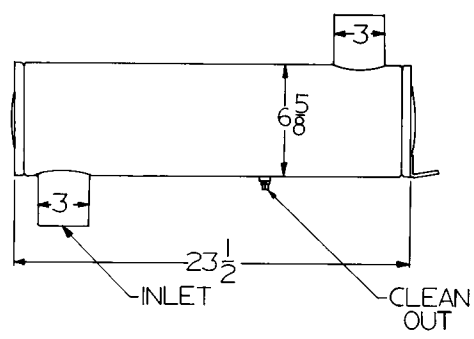
FOR NELSON T-14425—SEE T-14123



T-14529



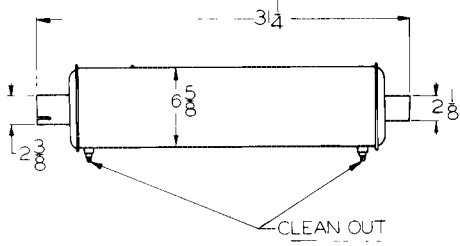
T-14630



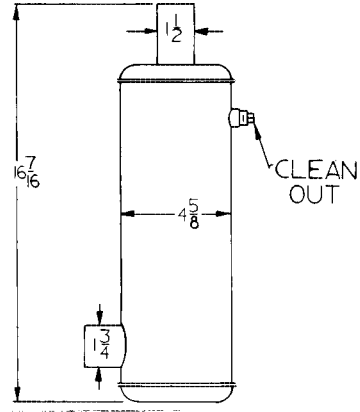
T-14631

NELSON

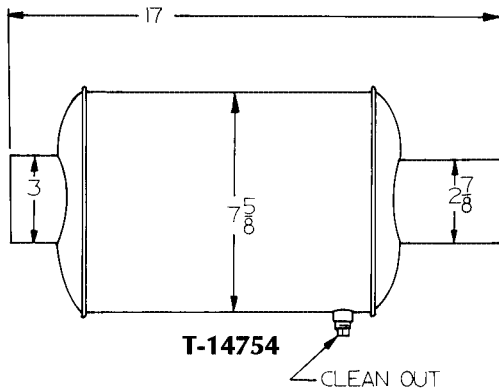
NELSON (continued)



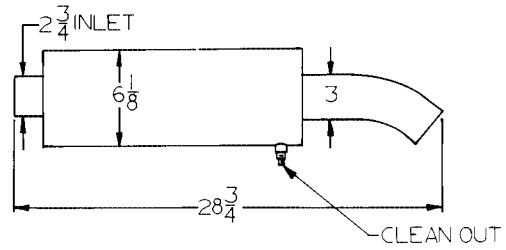
T-14671



T-14688

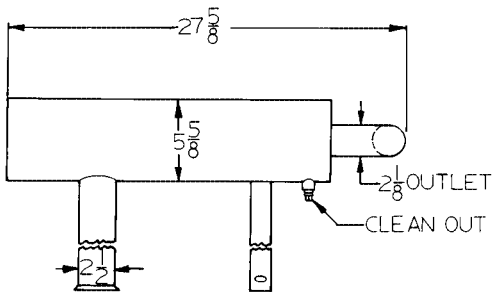


T-14754

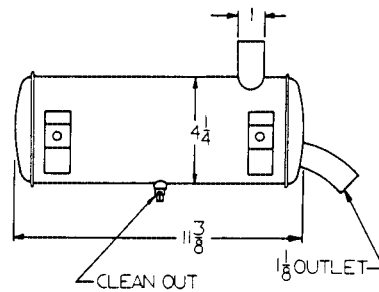


T-14816

FOR NELSON T-14853—SEE ONAN 155-1485

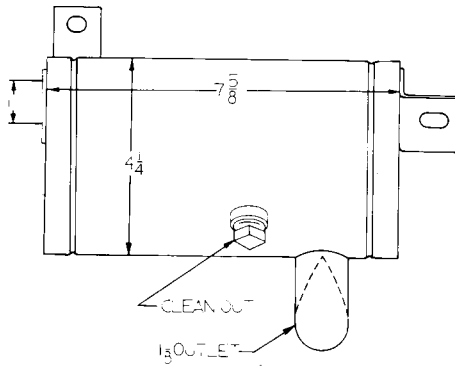


T-14907

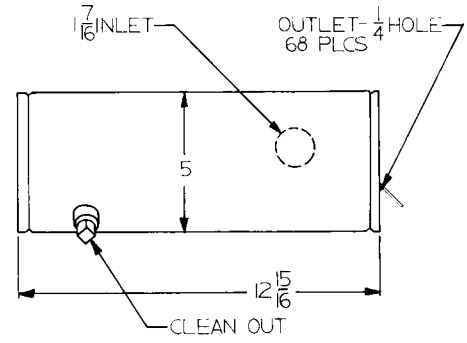


T-15077

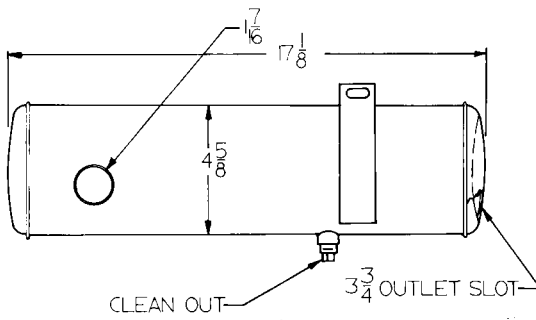
NELSON (continued)



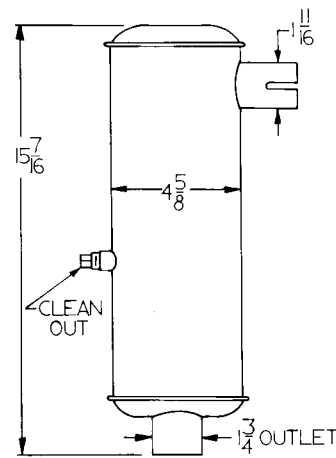
T-15078



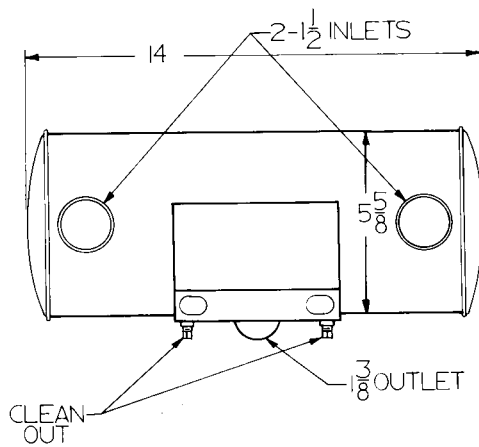
T-15079



T-15080



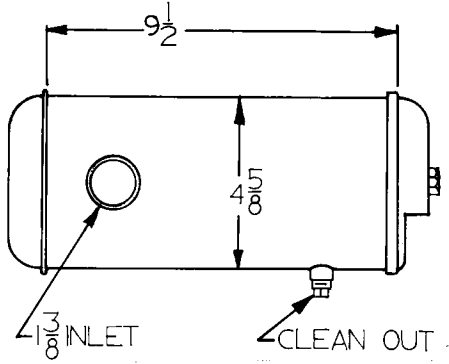
T-15215



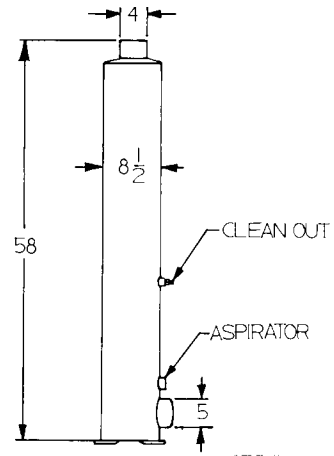
T-15341

NELSON

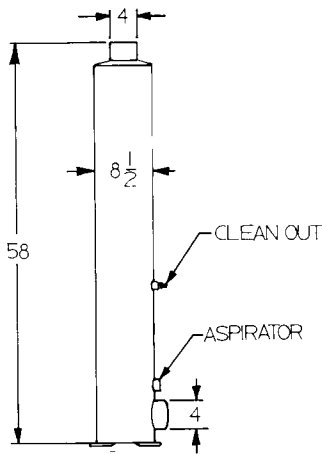
NELSON (continued)



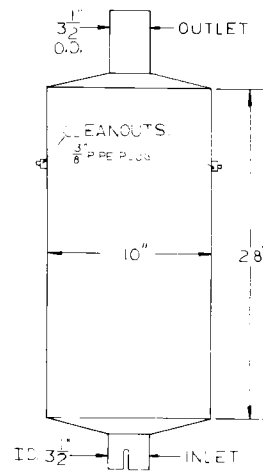
T-15611



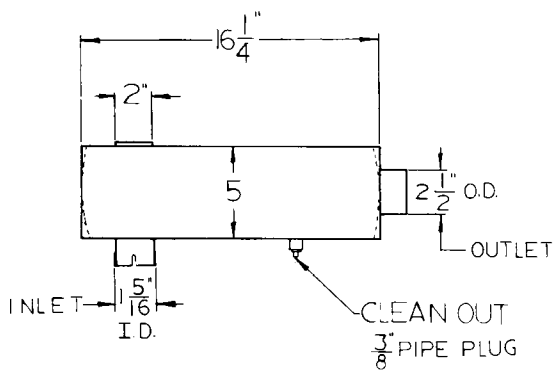
T-15688



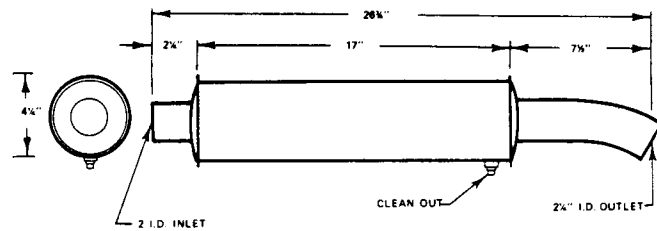
T-15689



14110

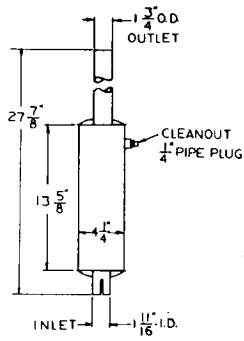


14113

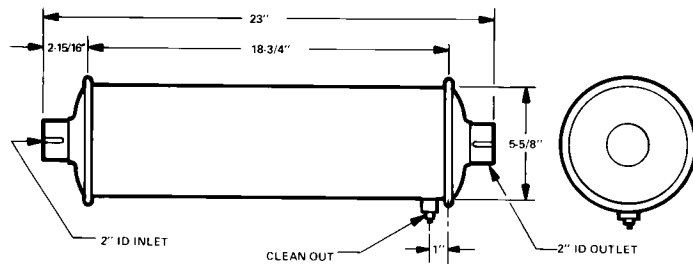


14217

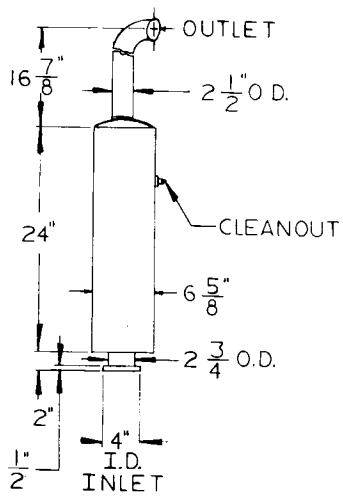
NELSON (continued)



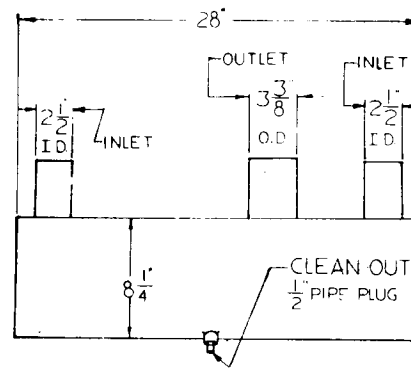
14390



14572



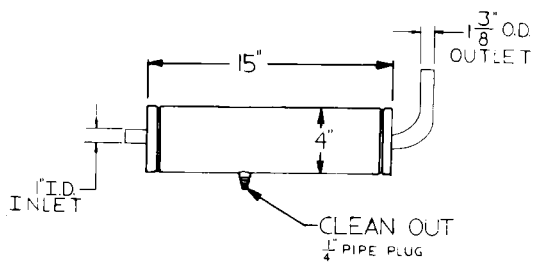
15064A



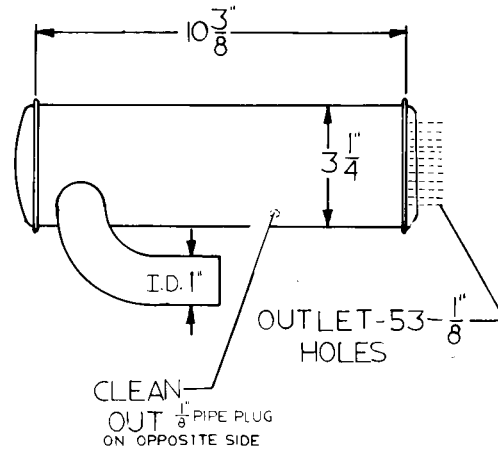
15514

NELSON

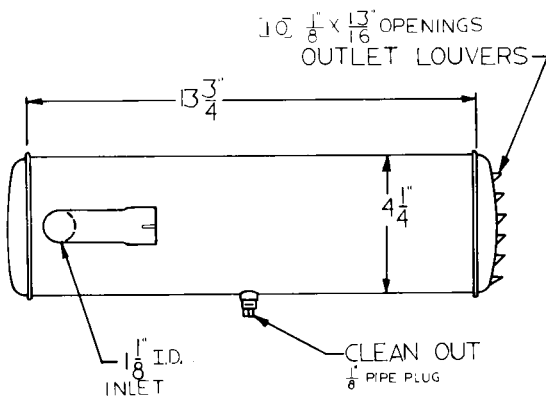
NELSON (continued)



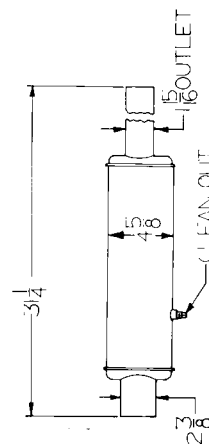
15567



15730

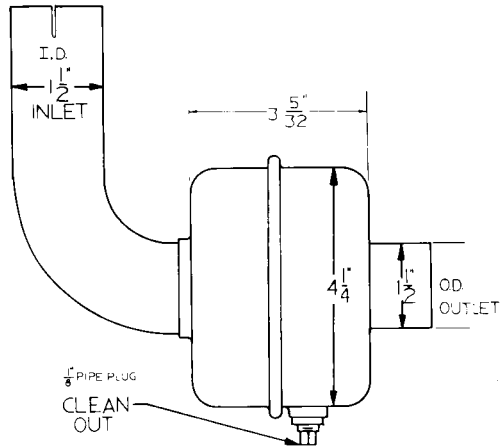


15731

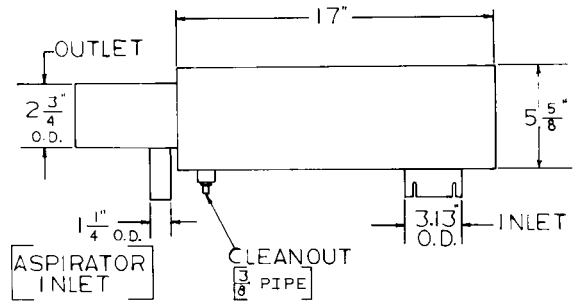


15818

NELSON (continued)

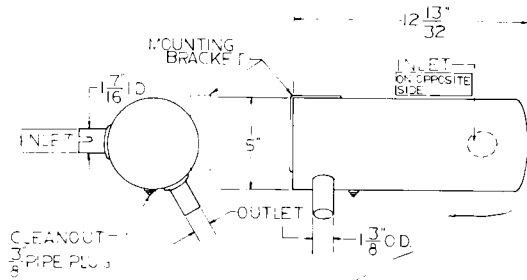


15870

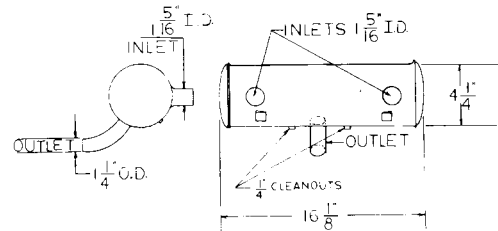


15876

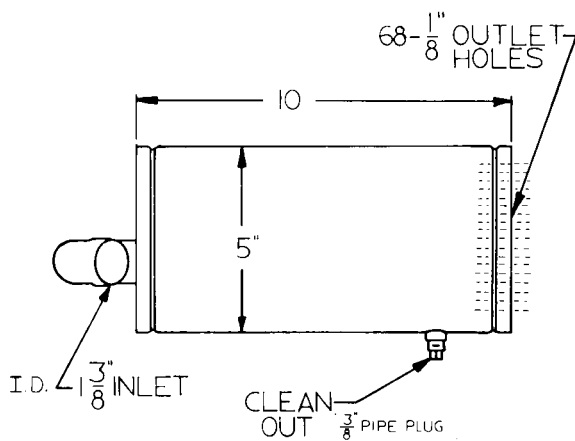
For Nelson 15893—See Onan 155-1520



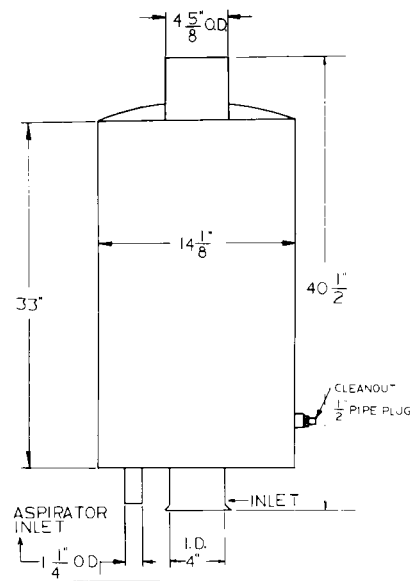
15934



15935



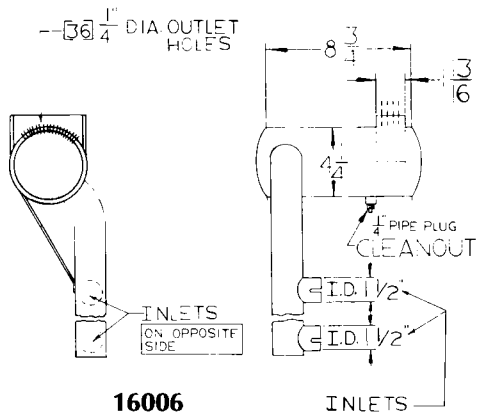
15982



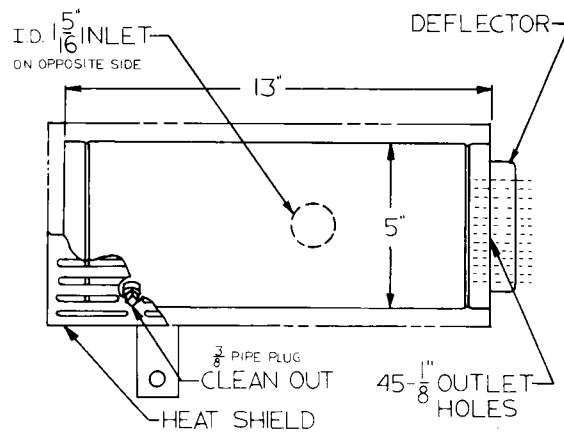
16001

NELSON

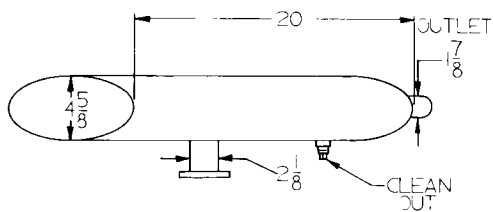
NELSON (continued)



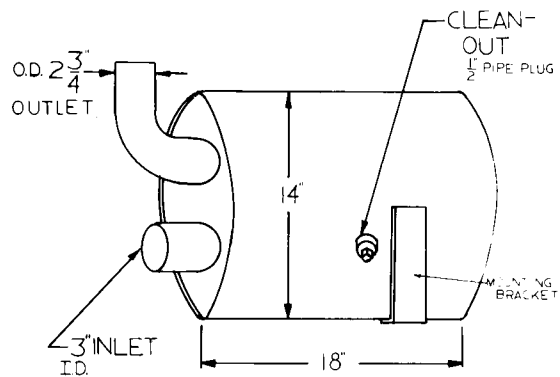
16006



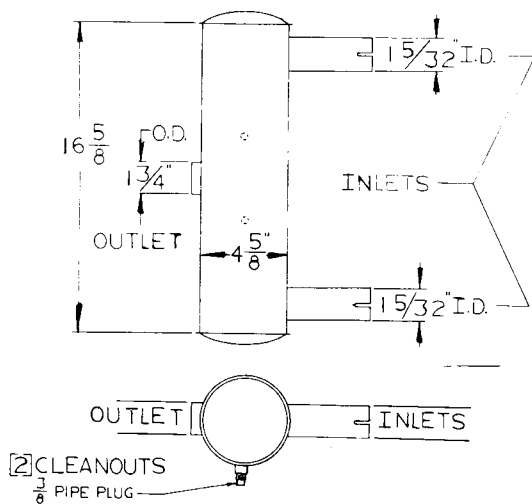
16011



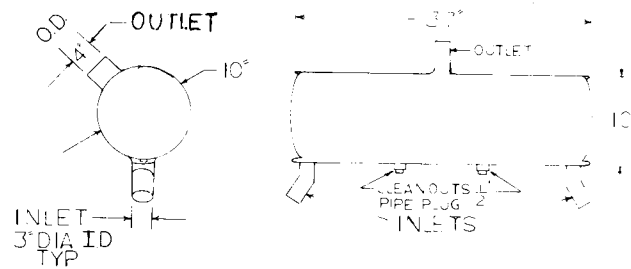
16025



16068

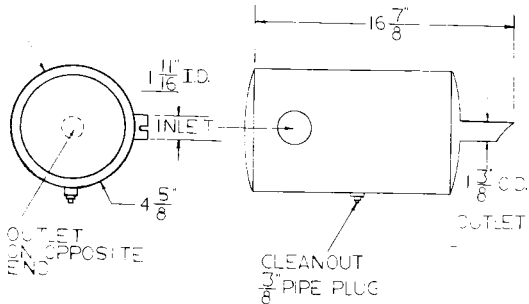


16152

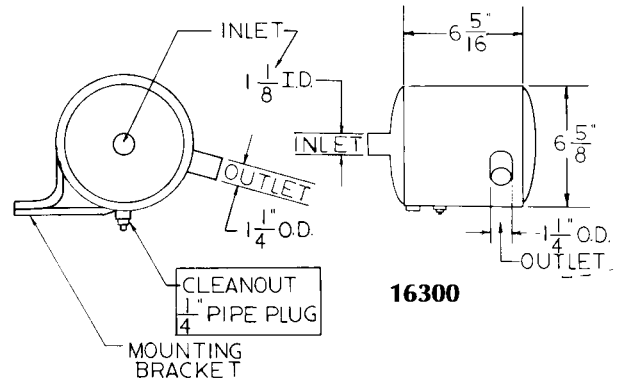


16170

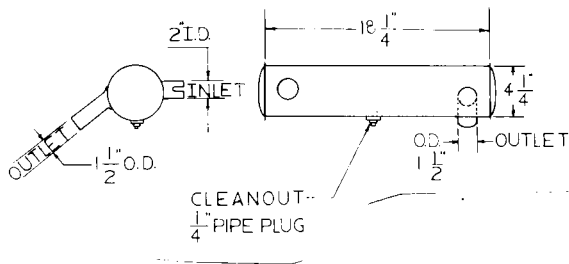
NELSON (continued)



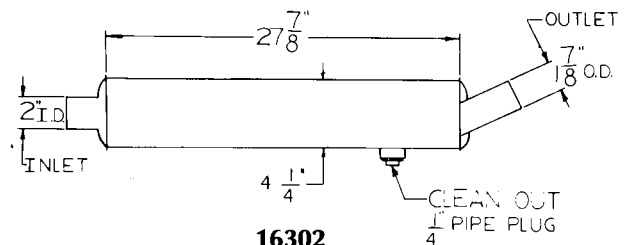
16297



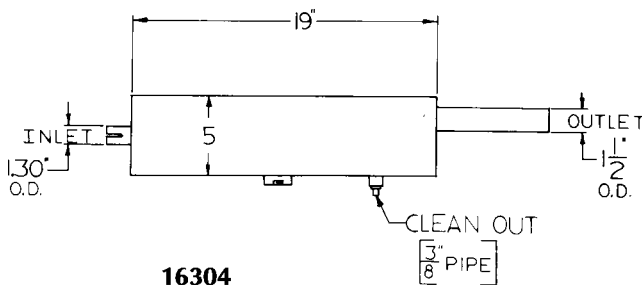
16300



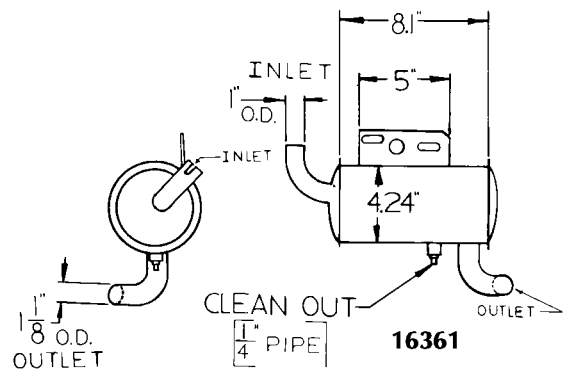
16301



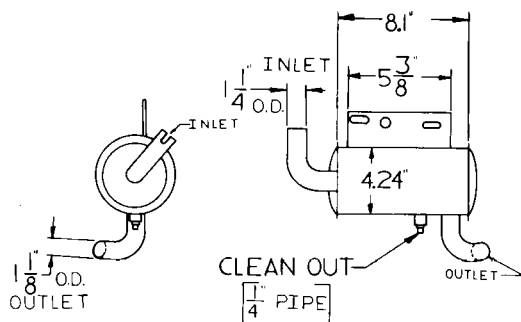
16302



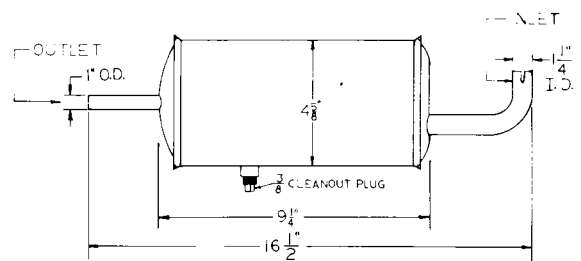
16304



16361



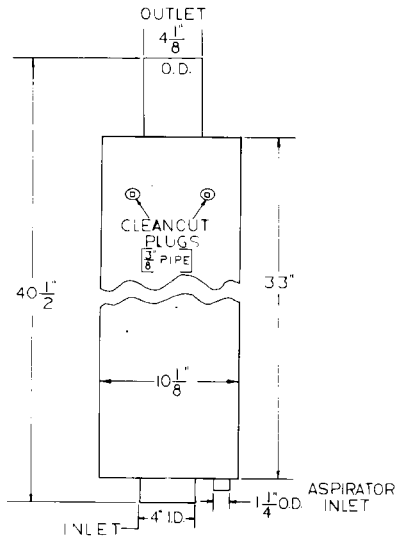
16362



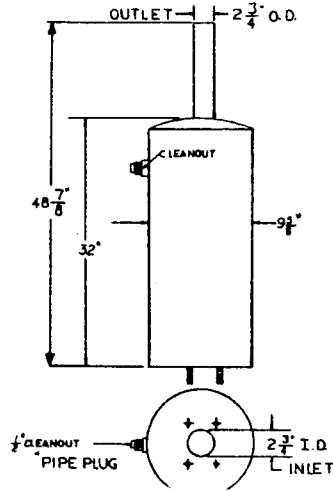
16460

NELSON

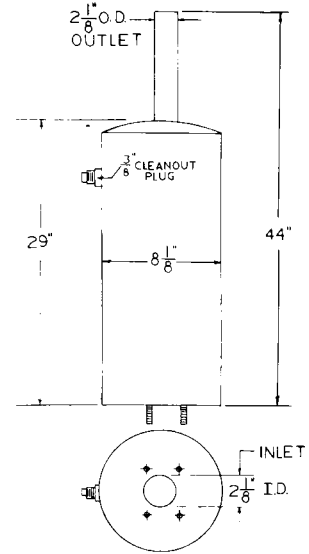
NELSON (continued)



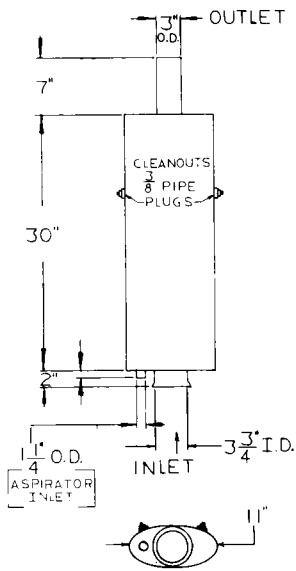
16504



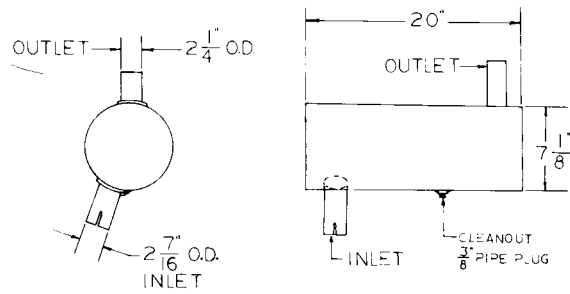
16506A



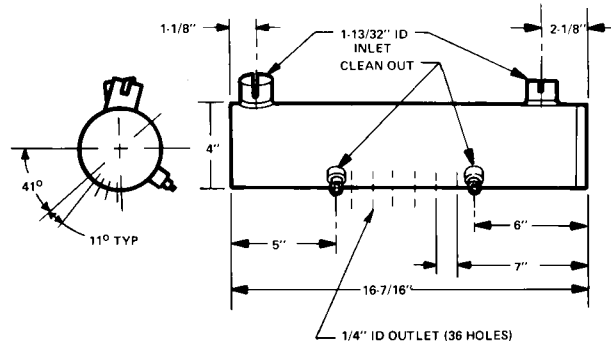
16507A



16538

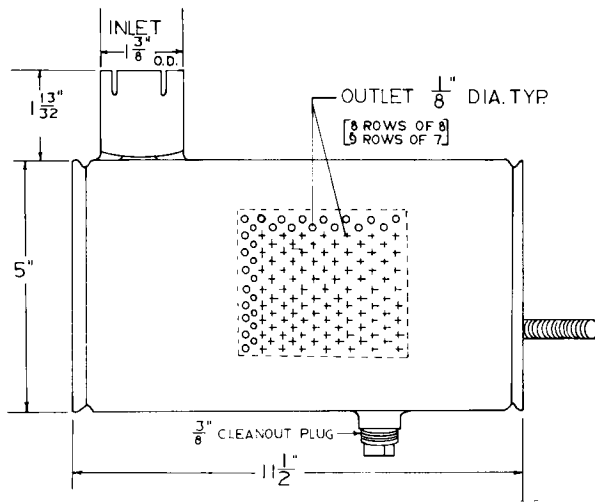


16547

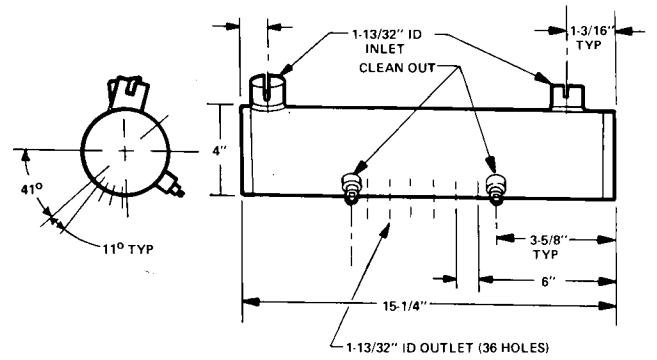


16572

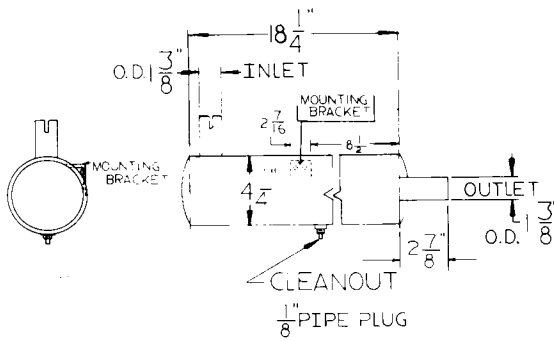
NELSON (continued)



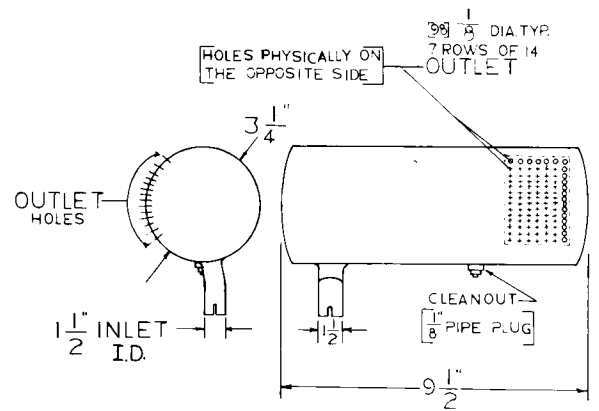
16619



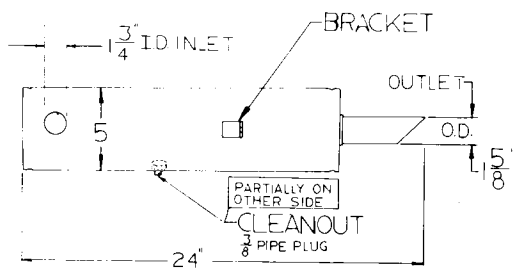
16628



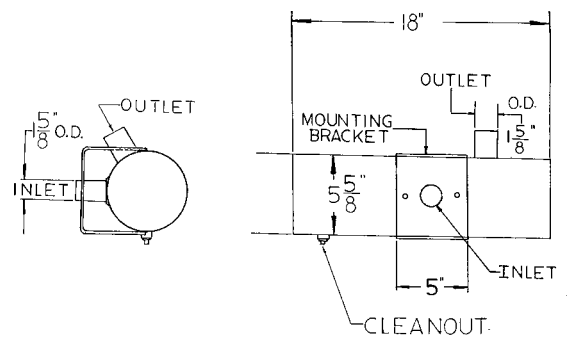
16667



16752



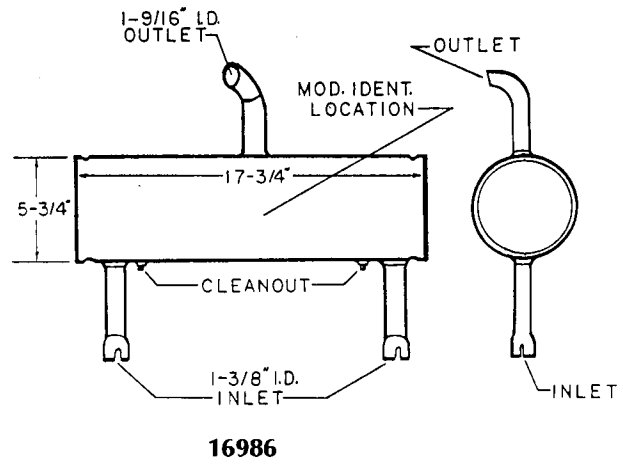
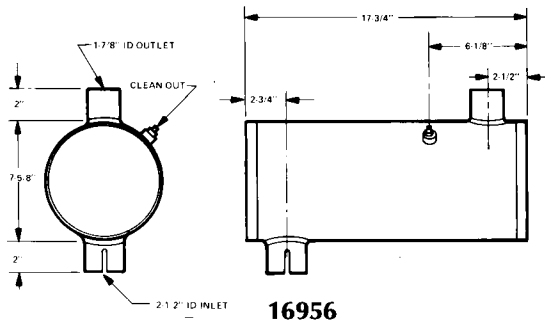
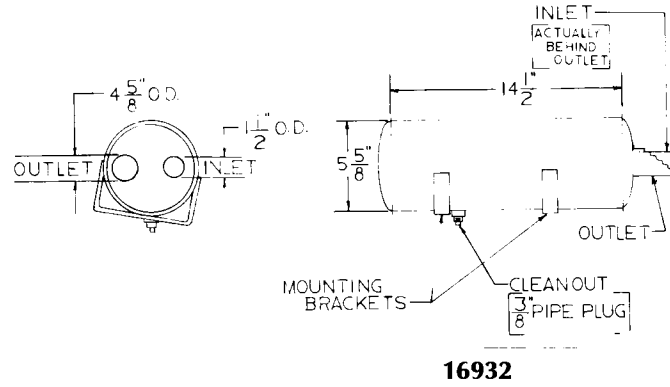
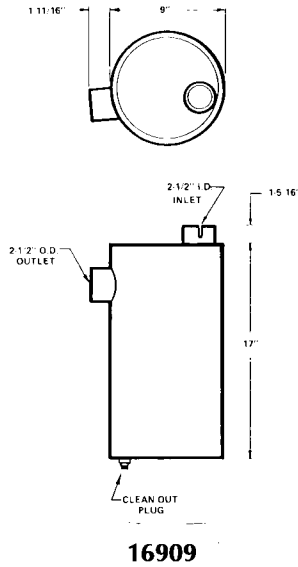
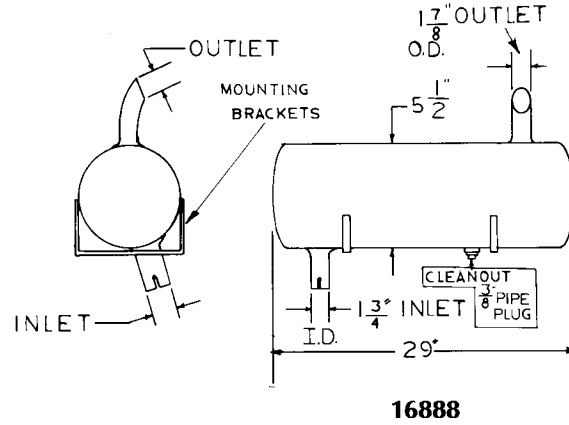
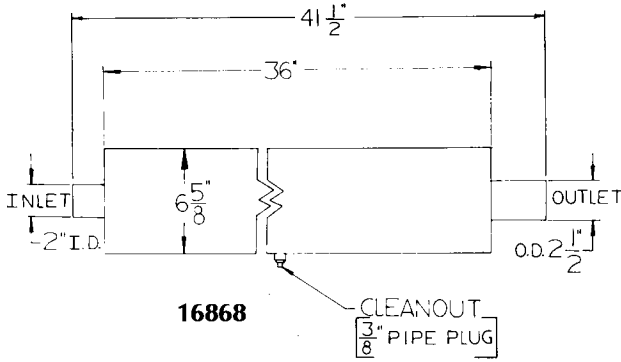
16825



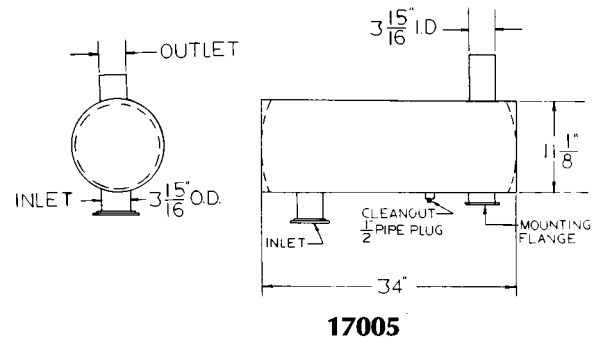
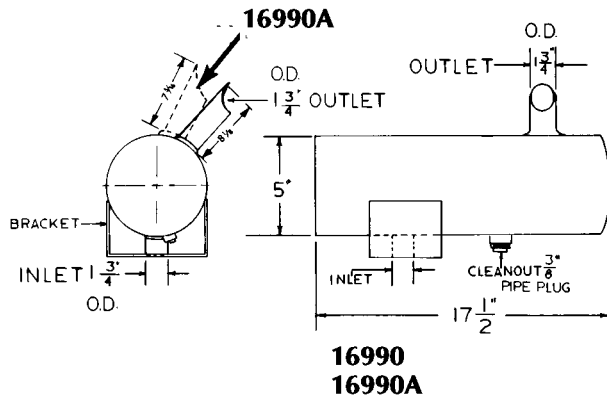
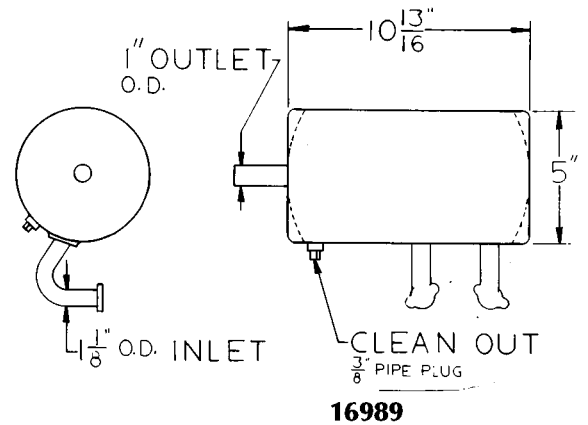
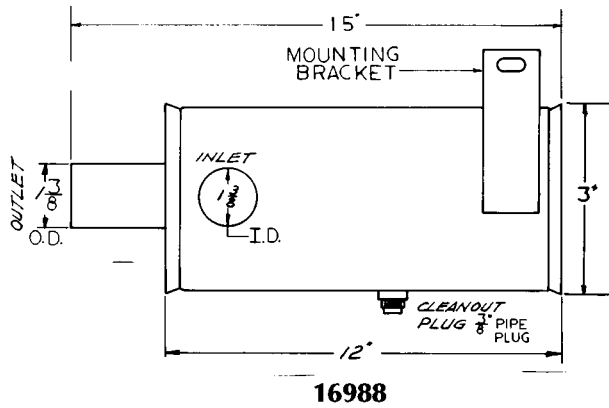
16828

NELSON

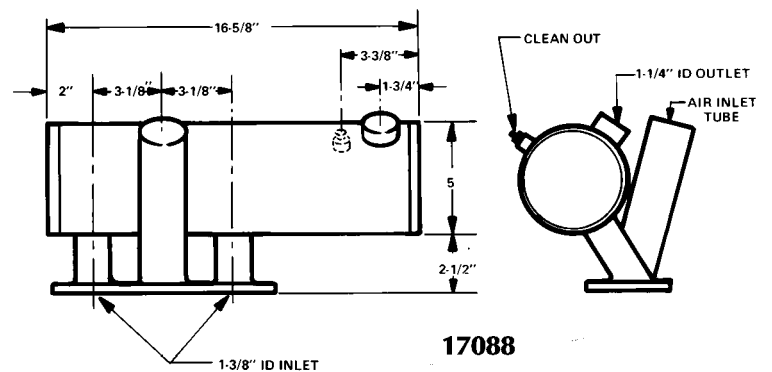
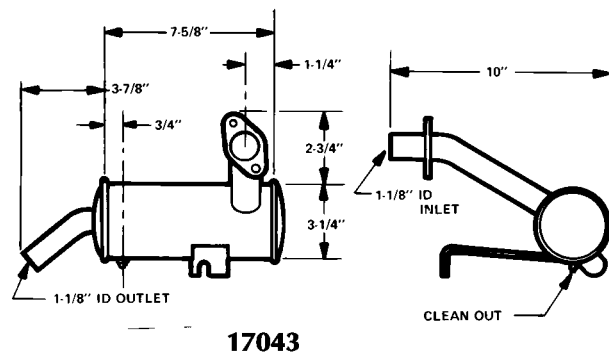
NELSON (continued)



NELSON (continued)

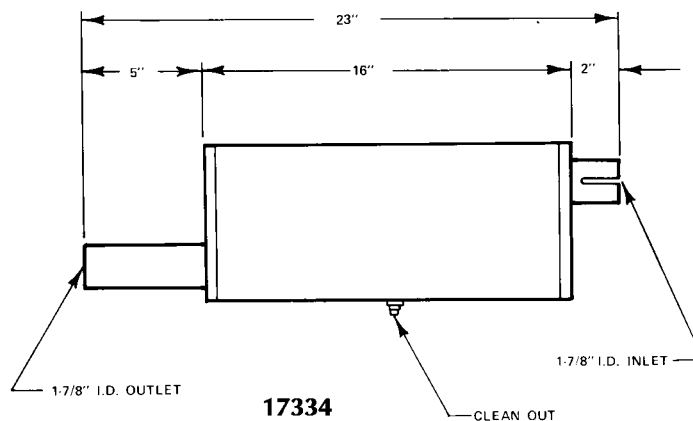
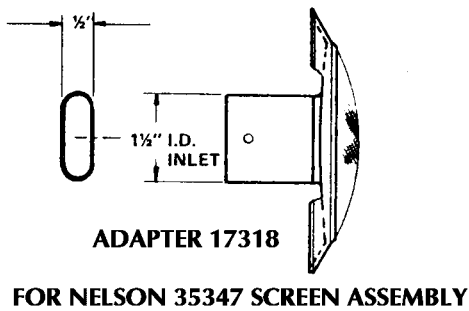
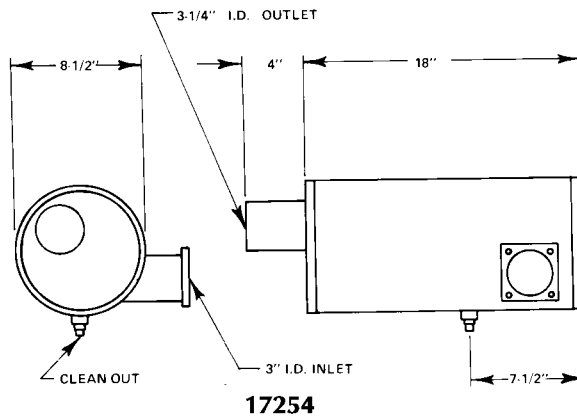
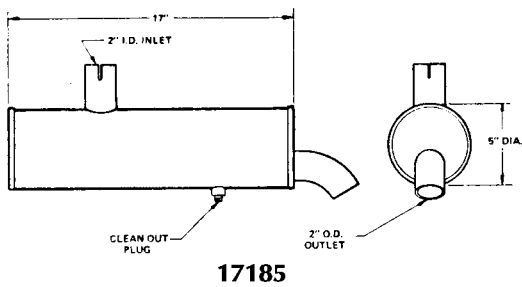
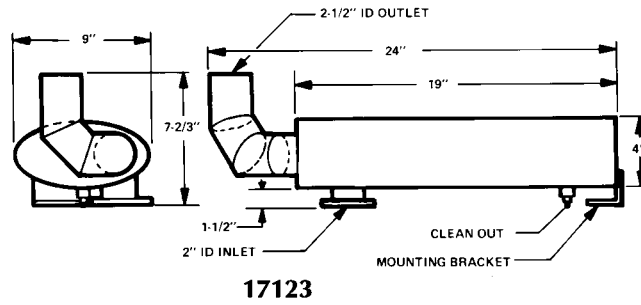
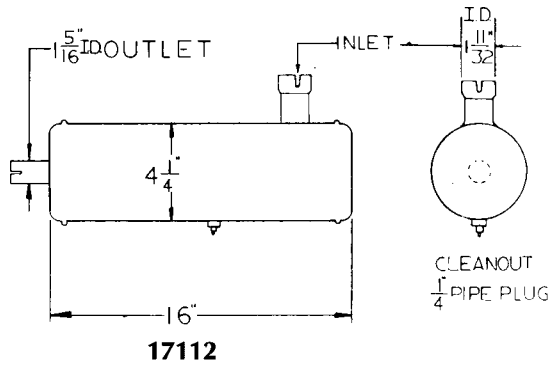


NOTE: THE DIFFERENCE BETWEEN THE 16990 AND 16990A IS THE ROTATION ANGLE, AND LENGTH OF OUTLET TUBE.

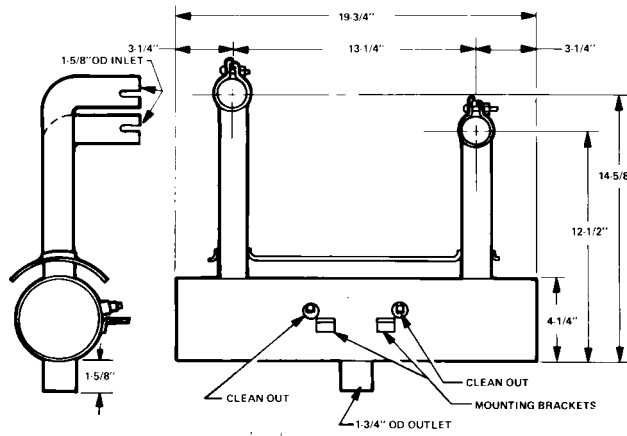


NELSON

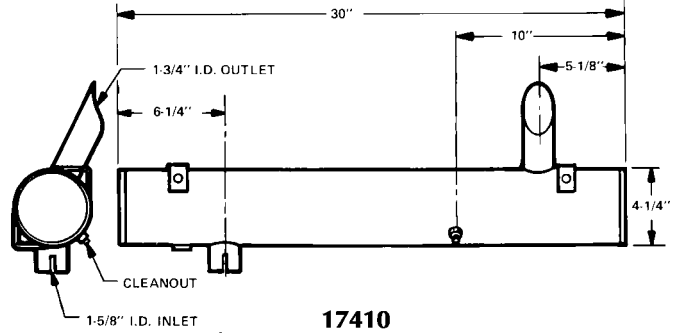
NELSON (continued)



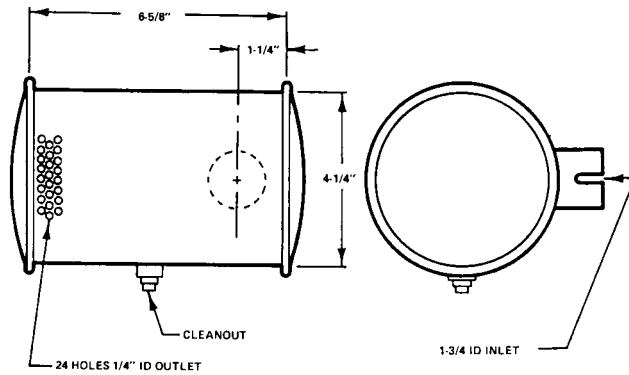
NELSON (continued)



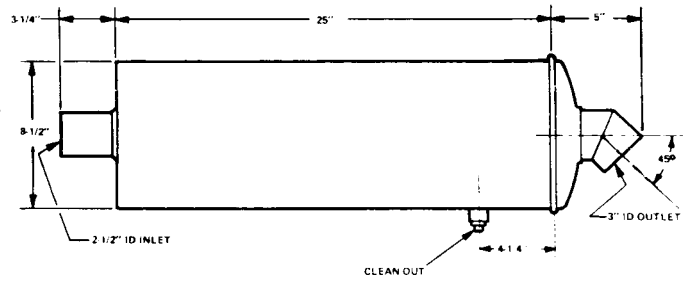
17371



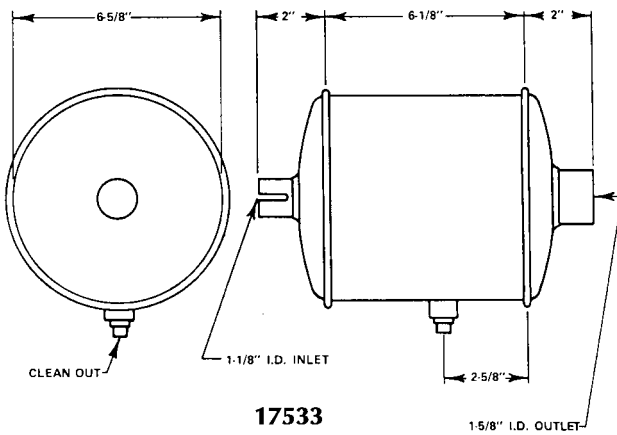
17410



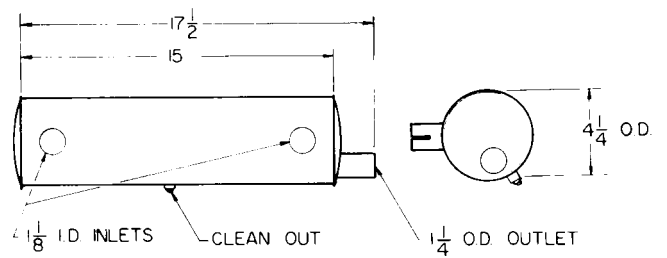
17470



17480



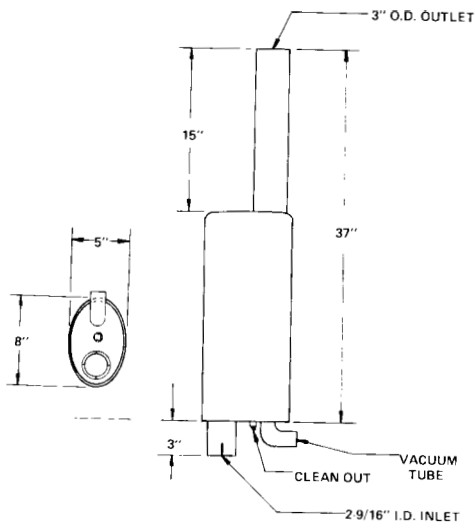
17533



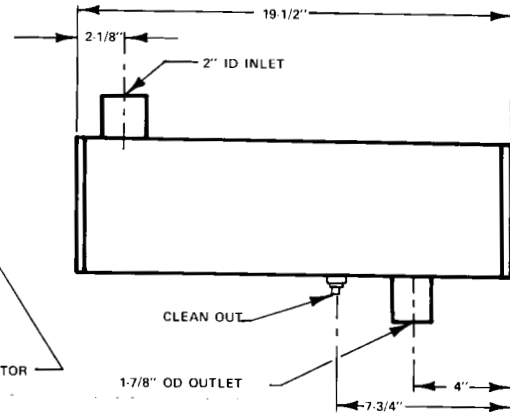
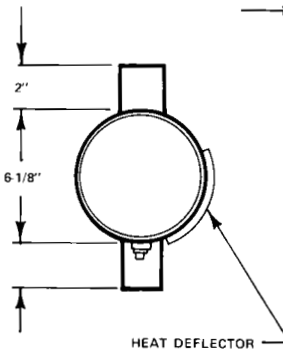
17622

NELSON

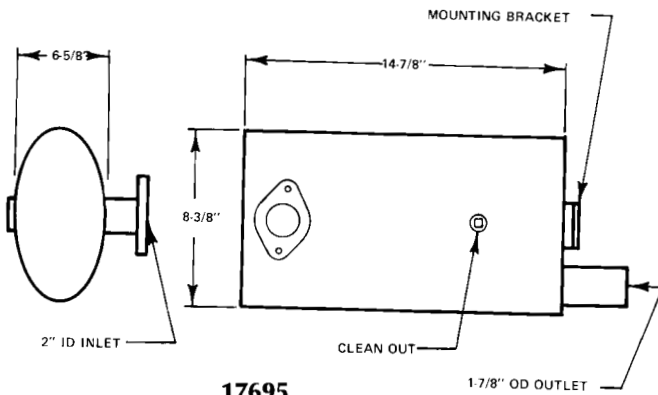
NELSON (continued)



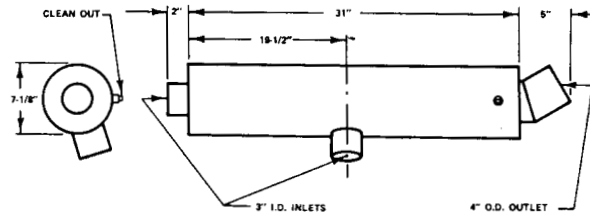
17657



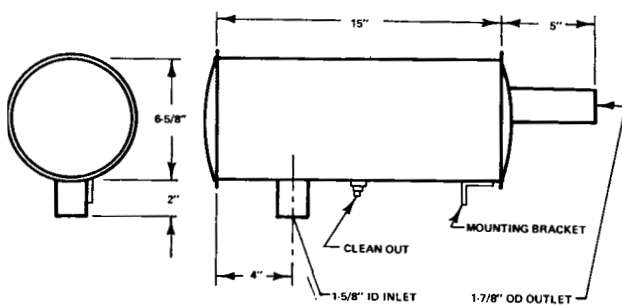
17674



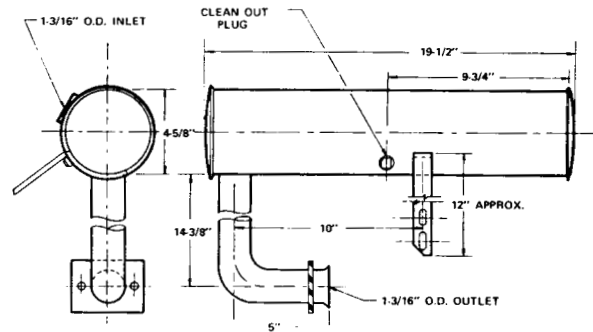
17695



17701

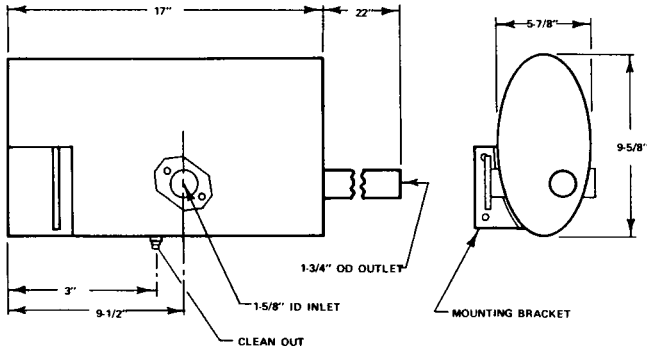


17746

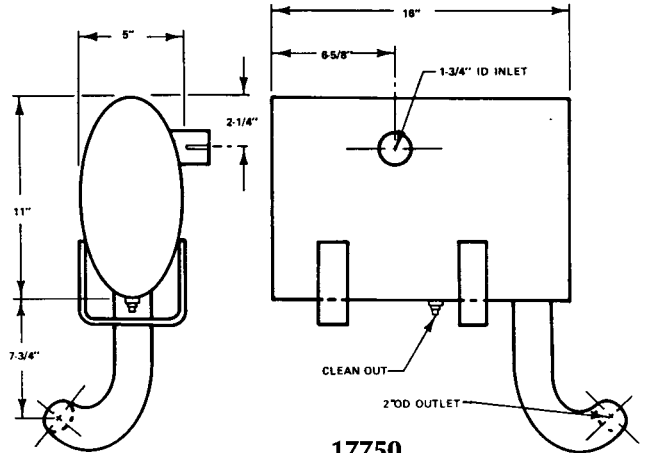


17747

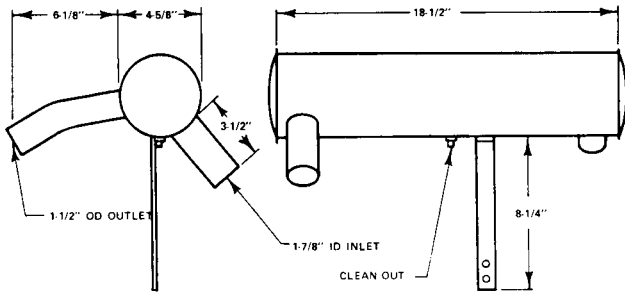
NELSON (continued)



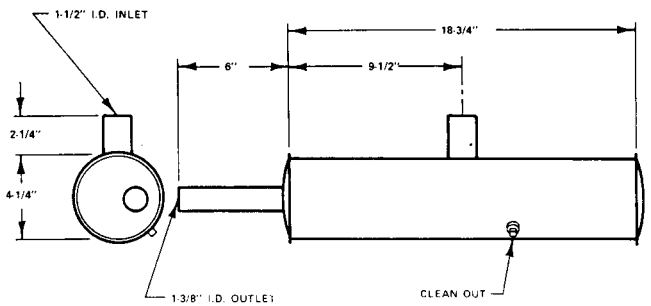
17749



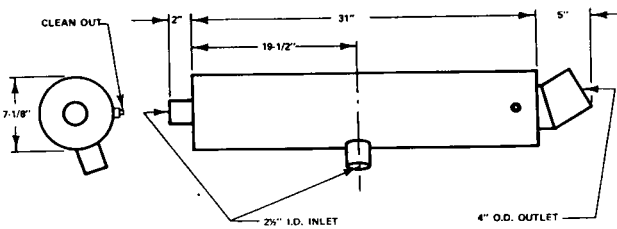
17750



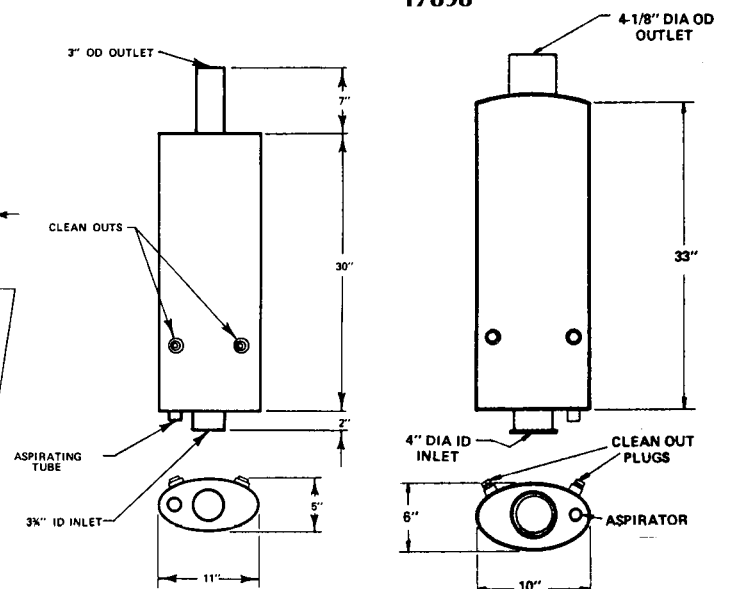
17765



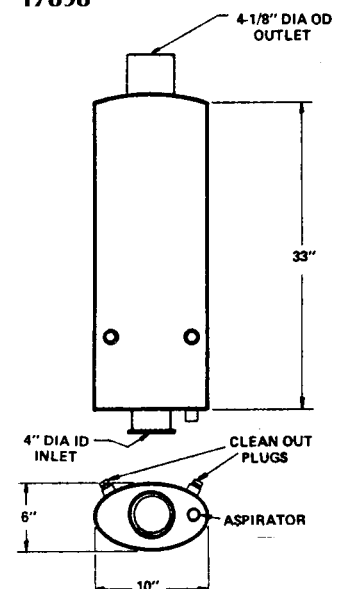
17898



17899



17973



17974